



Cavendish House St John's Wood, NW8

£1,000 p/w
Plus; Administration at £222
Referencing at £42 per tenant

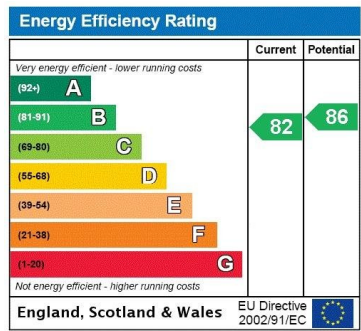
AN ABSOLUTELY SUPERB 2 BEDROOM 2 BATHROOM APARTMENT SITUATED ON THE 5TH FLOOR OF THIS MODERN BUILDING ON WELLINGTON ROAD. The apartment has been the subject of an extensive program of renovation and boasts a 28ft reception/dining room with wood flooring and a beautifully crafted kitchen/breakfast room. Both double bedrooms with fitted storage and master with en suite. Cavendish House is situated approximately a quarter of a mile from St John's Wood Underground station (Jubilee Line).

chesterton
SINCE 1805
humberts



Cavendish House St John's Wood, NW8

- *Portered Block in Central Location*
- *2 Large Double Bedrooms*
- *1 En Suite Bathroom*
- *Bluetooth Speakers*
- *Kitchen + Bathrooms TV Ready*
- *Close to St Johns Wood Tube (Jubilee Line) & Regents Park*



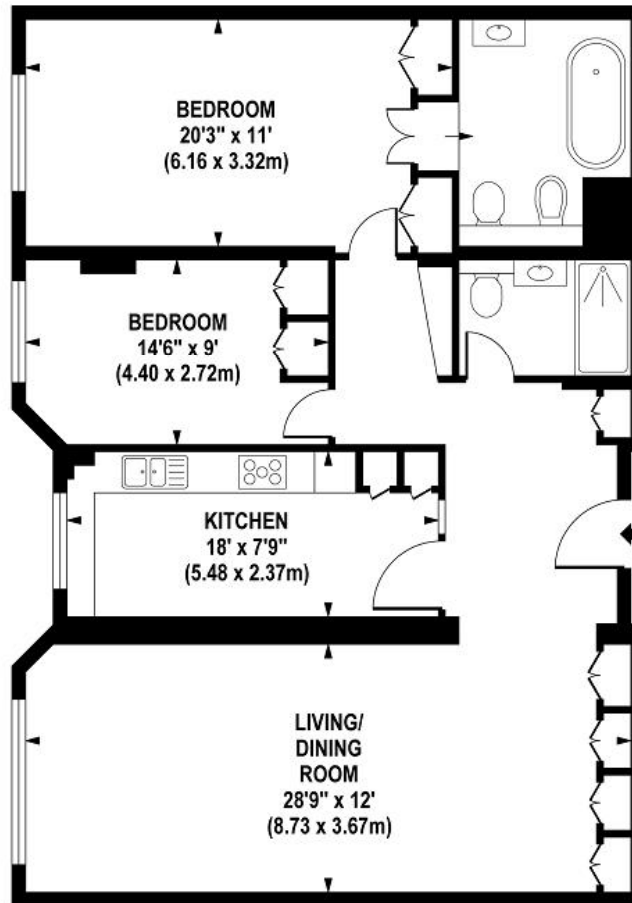
CONTACT

Chesterton Humberts
 122 St John's Wood High Street
 St John's Wood
 London
 NW8 7SG
 lettings.stjohnswood@chestertonhumberts.co
 m

020 3040 8622

chestertonhumberts.com

CAVENDISH HOUSE, NW8



FIFTH FLOOR

APPROX. GROSS INTERNAL FLOOR AREA 1175 SQ FT / 109.15 SQ M

This floor plan is for identification purposes only, and is not to scale.
Please check all dimensions, shapes and compass bearings before making any decisions reliant upon them.
This plan must not be reproduced by any other person without permission

©2014 www.mattdavisphoto.co.uk

UK | International | Sales | Lettings | Property Management | Commercial | Surveying | Valuations | Rural

Chesterton Global Ltd trading as Chesterton Humberts for themselves and for the vendor of this property whose agents they are, give notice that (i) these particulars do not constitute any part of an offer or contract, (ii) all statements contained within these particulars are made without responsibility on the part of Chesterton Humberts or the vendor, (iii) whilst made in good faith, none of the statements contained within these particulars are to be relied upon as a statement or representation of fact, (iv) any intending purchasers must satisfy themselves by inspection or otherwise as to the correctness of each of the statements contained within these particulars, (v) the vendor does not make or give either Chesterton Humberts or any person in their employment any authority to make or give representation or warranty whatsoever in relation to this property. Wideangle lenses may be used. ©Copyright Chesterton Humberts | Chesterton Global Ltd | Registered Office 3rd Floor, Connaught House, 1-3 Mount Street, Mayfair, London, W1K 3NB Registered Company Number 05334580.

chesterton
SINCE 1805
humberts