



## Altenburg Gardens, SW11

£370,000

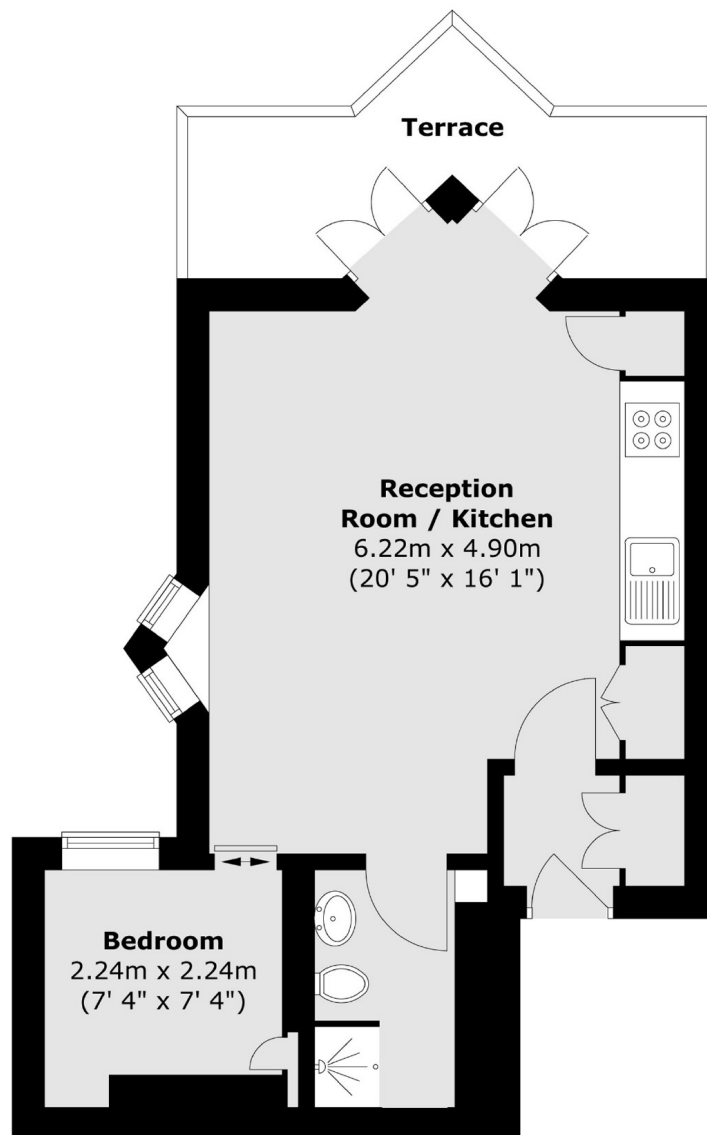
A stylish, contemporary Victorian conversion on the highly sought-after Altenburg Gardens, offering the perfect blend of modern comfort and period charm. The apartment boasts a bright, open-plan reception, kitchen, and dining area, ideal for entertaining or relaxing with friends and family. The double bedroom provides a peaceful retreat, complemented by a sleek, modern bathroom. Step outside onto your private outside space (roof terrace) to enjoy morning coffee, evening drinks, or simply soak up the sun in a tranquil setting. Further benefits include a share of the freehold, and the property is offered chain-free.

Altenburg Gardens is a highly sought-after, peaceful residential street just north of Clapham Common. The property is within easy walking distance of both Clapham Junction Overground and Clapham Common Tube Station, while the vibrant Northcote Road, with its shops, cafes, and restaurants, is also just a short stroll away.

### Features

- Victorian Conversion
- Open Plan Reception/Kitchen
- Share Of The Freehold
- Fully Refurbished
- Private Terrace
- Chain Free

# Altenburg Gardens, London, SW11



Total area (approx.) : 34.6 sq. m (372 sq. ft)  
Total terrace area (approx.) : 6.3 sq. m (68 sq. ft)