

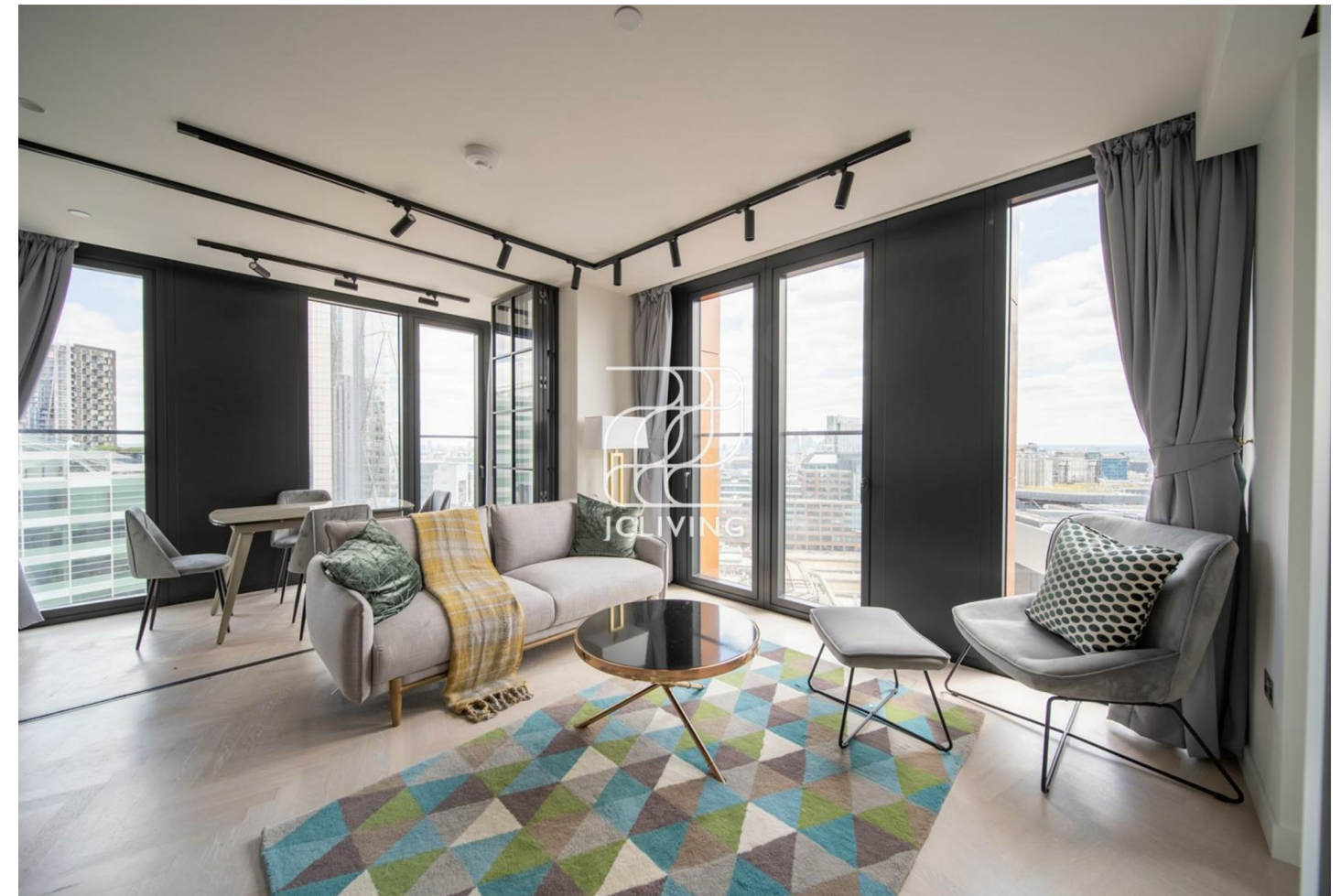
### Directions

### Viewings

Viewings by arrangement only. Call 02033696888 to make an appointment.

### EPC Rating

Energy Efficiency Rating		Current	Potential
Very energy efficient - lower running costs			
(92 plus) A			
(81-91) B			
(69-80) C			
(55-68) D			
(39-54) E			
(21-38) F			
(1-20) G			
Not energy efficient - higher running costs			
<b>England &amp; Wales</b>		EU Directive 2002/91/EC	



## CN515 Apartment N1303, One Crown Place 19 Sun Street,, London, EC2A

2BR  
£5,000

- Residents terrace
- Residents gym
- Communal dining room
- 24 hour concierge
- Juliet balcony
- Residents cinema
- Residents spa facilities
- Residents work hub
- Floor to ceiling windows

# One Crown Place 19 Sun Street,, London EC2A 2ER

\*\*\* Please quote reference JC2309753 when contacting the agency \*\*\*

This property is located in vibrant Shoreditch, London. This modern apartment offers a unique opportunity to experience city living at its finest. This apartment is part of a prestigious development that boasts an array of exceptional amenities designed to enhance your lifestyle.

As a resident, you will have access to a beautifully designed terrace, perfect for enjoying the fresh air and socialising with neighbours. For those who appreciate film, the residents' cinema room provides a fantastic space to unwind with the latest releases. Fitness enthusiasts will be delighted by the well-equipped gym, while the treatment room offers a serene escape for relaxation and rejuvenation.

The communal dining room is an ideal setting for hosting gatherings or enjoying meals with friends, fostering a sense of community among residents. Additionally, the property features a dedicated work hub, catering to those who may need a quiet space to focus on their professional tasks.

Safety and convenience are paramount, with a 24-hour concierge service and security measures in place, including surveillance to ensure peace of mind. This apartment not only provides a comfortable living space but also a vibrant community atmosphere, making it an excellent choice for anyone looking to immerse themselves in the dynamic lifestyle that London has to offer.



Council Tax Band:

