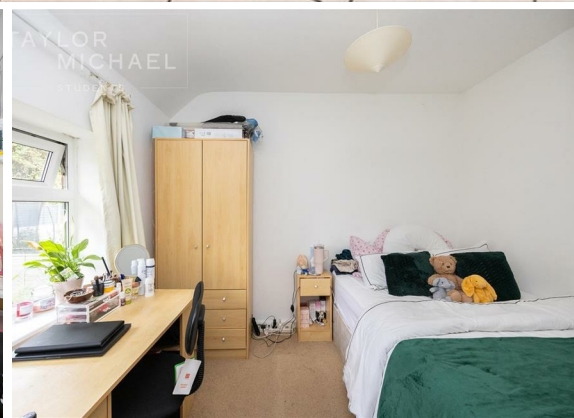




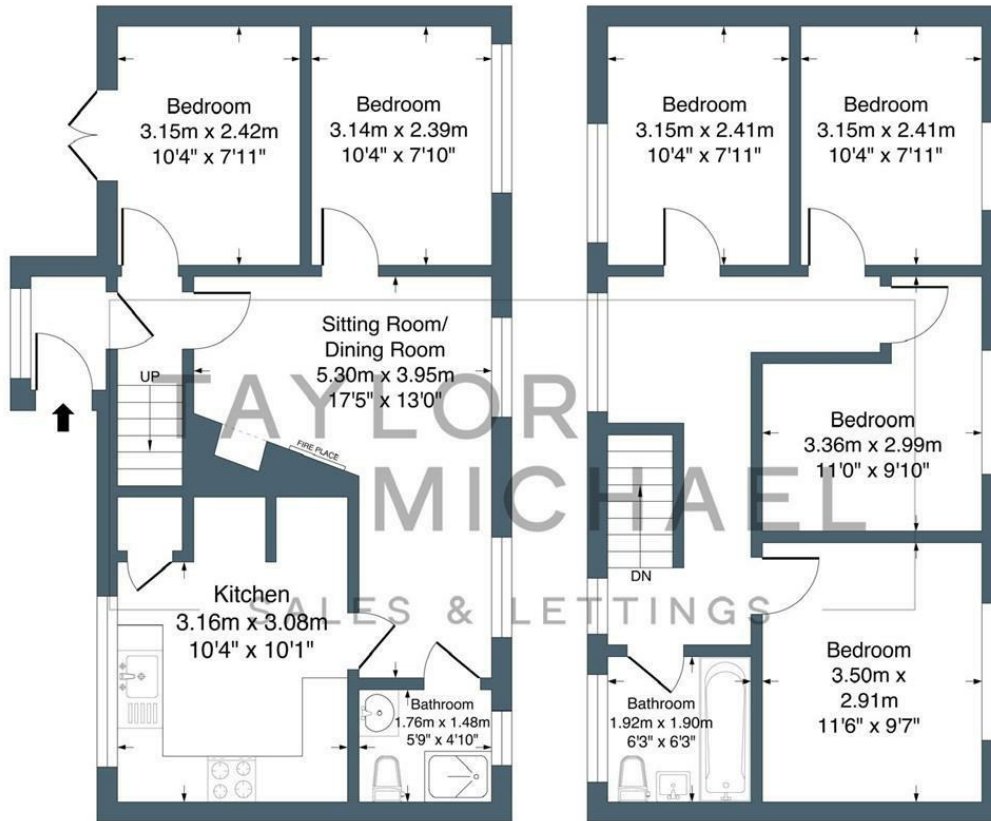
6 Bed
House - Terraced
located in

£2,990 Per month



TAYLOR
MICHAEL
STUDENTS

The Byway



Ground Floor
Approximate Floor Area
564.73 sq.ft
(52.46 sq.m)

First Floor
Approximate Floor Area
546.17 sq.ft
(50.74 sq.m)

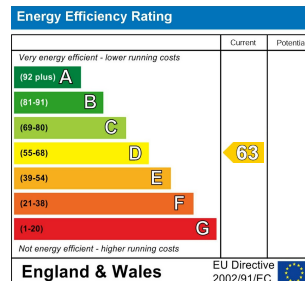
Illustration for identification purposes only, measurements are approximate, not to scale.

DIRECTIONS

CONTACT

62 Church Road
Hove
East Sussex
BN3 2FP

E: lettings@taylormichael.agency
T:
<https://taylormichael.agency/>



TAYLOR
MICHAEL
STUDENTS