

shepherds

A better home  
moving experience



173 London Road  
Hertford Heath, SG13 7PN

**Price Guide £675,000**



## 173 London Road

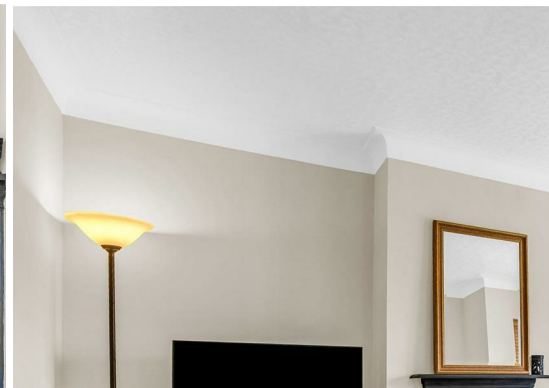
Hertford Heath, SG13 7PN

**SOLD BY SHEPHERDS** - A charming and beautifully presented three-bedroom semi-detached home, ideally situated in the highly sought-after village of Hertford Heath. This attractive property effortlessly blends character and comfort, offering bright, well-proportioned accommodation throughout that is perfectly suited to modern family living. From the moment you arrive, the home's appealing frontage and welcoming feel set the tone for what lies within.

Inside, the property features a spacious and inviting living room with a characterful fireplace, alongside a stylish fitted kitchen with separate dining room with views and access to the garden—creating an ideal space for both everyday living and entertaining. There is also the additional benefit of a downstairs cloakroom. Upstairs, three bedrooms are complemented by a contemporary shower room, all presented in excellent condition.

Externally, the property truly excels, boasting a beautifully maintained and mature rear garden that provides a peaceful retreat with plenty of space for outdoor dining and relaxation. In addition, there is a detached garage and car port offering ample parking.

Perfectly positioned, the property is approximately equidistant to both Hertford and Hoddesdon, each offering a range of shops, amenities and mainline train stations providing excellent links into London. The village itself benefits from a convenience shop, a well-regarded primary school and three traditional pubs, enhancing the strong sense of community and making this an ideal location for families and commuters alike.

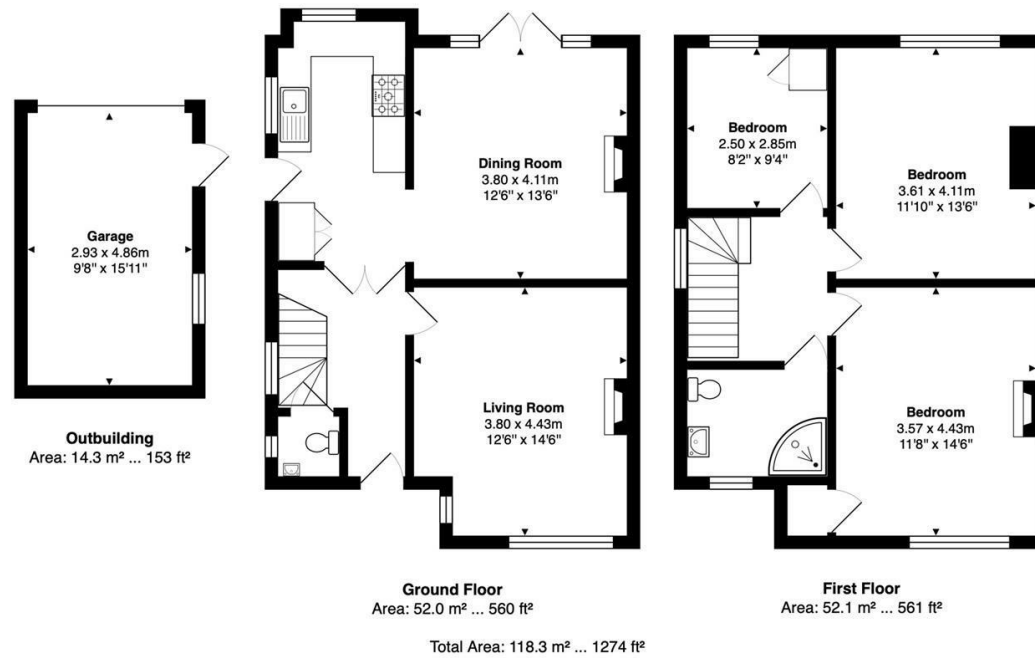




- Attractive three-bedroom semi-detached home in the sought-after village of Hertford Heath
- Beautifully maintained and mature rear garden, ideal for outdoor entertaining
- Spacious living room with feature fireplace and bay-style window
- Modern fitted kitchen leading through to a bright dining room with garden access
- Three well-proportioned bedrooms and a contemporary family shower room
- Detached garage and carport offering ample parking
- Downstairs cloakroom
- Access to a convenience shop, a well-regarded primary school and three traditional pubs



## Floor Plan

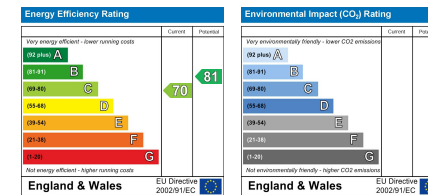


FOR ILLUSTRATIVE PURPOSES ONLY, NOT TO SCALE.  
Whilst every attempt has been made to ensure the accuracy of the floor plan shown, all measurements, positioning, fixtures, features, fittings and any other data shown are an approximate interpretation for illustrative purposes only and are not to scale. No responsibility is taken for any error, omission, miss-statement or use of data shown.  
Property marketing provided by [www.matthewkyle.co.uk](http://www.matthewkyle.co.uk)

## Viewing

Please contact Shepherds of Hertford on 01992 551955 if you wish to arrange a viewing appointment for this property or require further information.

## Energy Performance Graph



These particulars, whilst believed to be accurate are set out as a general outline only for guidance and do not constitute any part of an offer or contract. Intending purchasers should not rely on them as statements of representation of fact, but must satisfy themselves by inspection or otherwise as to their accuracy. No person in this firm's employment has the authority to make or give any representation or warranty in respect of the property.

Riverside House, 6 Millbridge, Hertford, SG14 1PY  
Tel: 01992 551955 Email: [enquiries@shepherdsfhertford.co.uk](mailto:enquiries@shepherdsfhertford.co.uk)