



Rotherhithe Street, SE16

£350,000

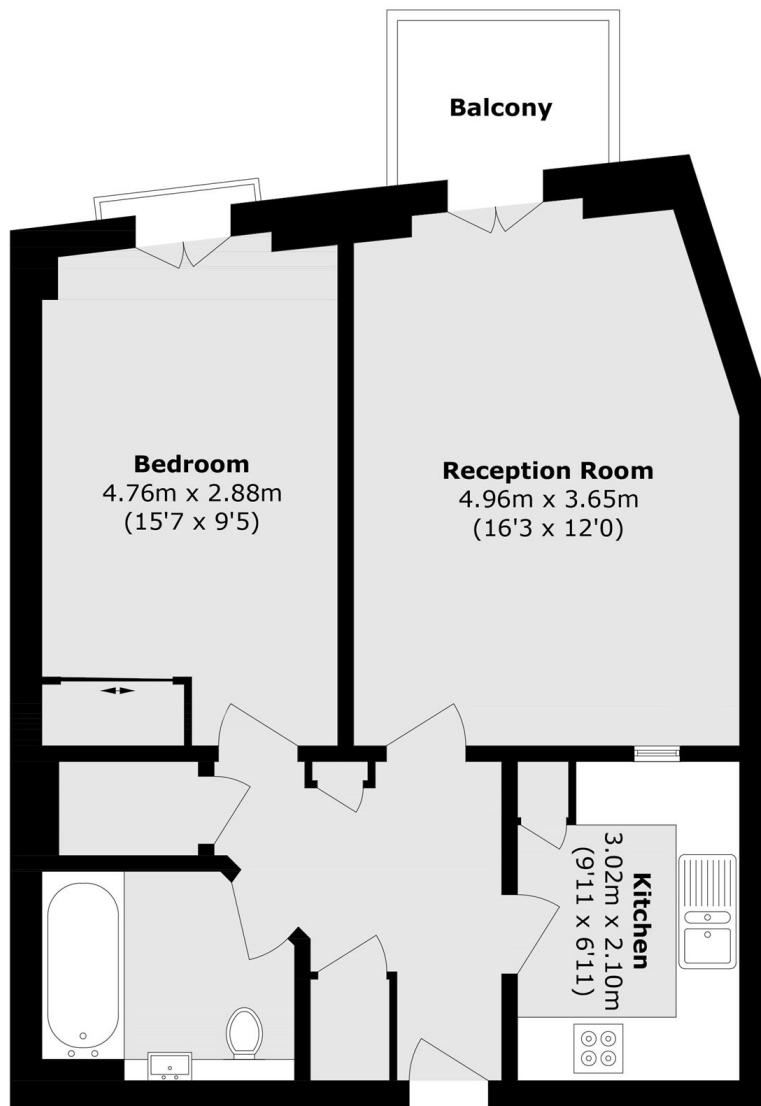
Situated within this extremely sought after Grade II listed waterfront warehouse conversion, this one double bedroom flat is immaculately presented and boasts a large living space, modern bathroom, ample storage and offers concierge, gym, swimming and spa facilities.

Globe Wharf, set along the Thames Path, is just 0.6 miles from Rotherhithe and 0.8 miles from Canada Water stations, with excellent bus & ferry links. A wide range of shops, cafés, riverside pubs and restaurants are close by.

Features

- Excellent Condition
- Period Features
- South-facing Balcony
- High Ceilings
- Concierge, Gym & Pool/Spa
- Riverside Development

Rotherhithe Street, London, SE16



Total area (approx.): 53.0 sq. m (570.4 sq. ft)

Balcony area (approx.): 2.8 sq. m (30.1 sq. ft)