



Sunnyside, offers in the region of £125,000

- Open Plan Dining/Living Area
- Modernised Throughout
- No Ongoing Chain
- Council Tax Band A
- Stunning Mountain Views
- EPC Rating: Awaited



2 1 1



About the property

A beautifully decorated two-bedroom mid-terrace home, situated in the picturesque village of Ogmere Vale, Bridgend. Offered for sale with no ongoing chain, this impressive property presents an ideal turnkey opportunity.

The accommodation begins with a separate entrance hall, leading through double-glazed internal doors into a stylish open-plan L-shaped lounge/diner. The lounge area benefits from a striking panelled feature wall, creating a warm and inviting space which flows seamlessly through to the kitchen. The kitchen is fitted with a bright and modern range of units, offering both contemporary appeal and practical storage.

To the first floor are two good-sized bedrooms and a well-appointed family bathroom.

Externally, the property boasts an elevated rear garden featuring a decked and patio seating area, ideal for outdoor dining while enjoying the stunning open views. There is also a further covered area to the rear, offering excellent potential to create a garden office (STPP), entertaining space, or additional seating area.





Accommodation

Entrance Hall

L Shaped Lounge/Diner

21' 4" max x 15' 9" max (6.50m max x 4.80m max)

Kitchen

15' 9" x 8' 2" (4.80m x 2.49m)

First Floor

Bedroom One

16' 1" max x 9' 10" (4.90m max x 3.00m)

Bedroom Two

11' 6" x 8' 2" (3.51m x 2.49m)

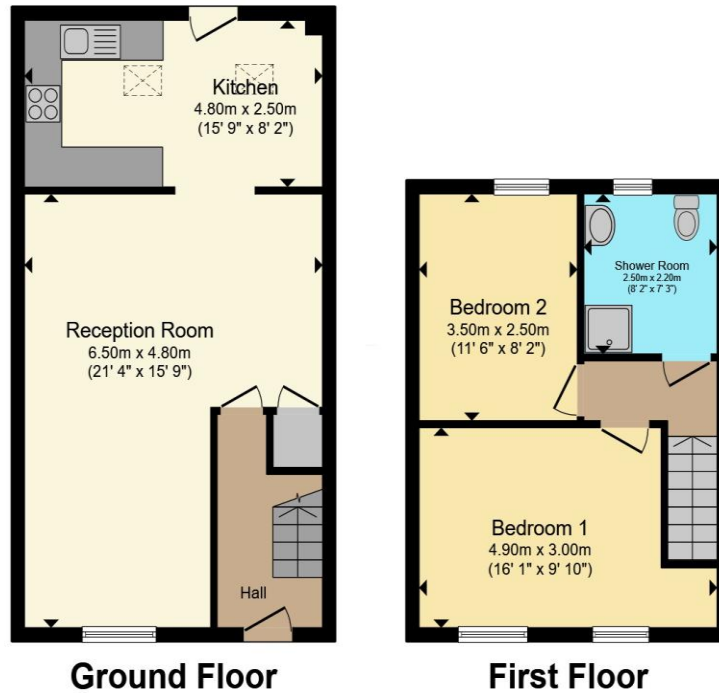
Shower Room

8' 2" x 7' 3" (2.49m x 2.21m)

01656 657201

bridgend@peteralan.co.uk

Floorplan



Total floor area 74.9 m² (806 sq.ft.) approx

This floor plan is for illustrative purposes only. It is not drawn to scale. Any measurements, floor areas (including any total floor area), openings and orientation are approximate. No details are guaranteed, they cannot be relied upon for any purpose and they do not form part of any agreement. No liability is taken for any error, omission or misstatement. A party must rely upon its own inspection(s). Powered by www.propertybox.io

Important Information

Note while we endeavour to make our sales details accurate and reliable, if there is any point which is of particular interest to you, please contact the office and we will be pleased to confirm the position for you. We have not personally tested any apparatus, equipment, fixtures, fittings or services and cannot verify they are in working order or fit for their purposes. Nothing in these particulars is intended to indicate that carpets or curtains, furnishings or fittings, electrical goods (whether wired or not). Gas fires or light fittings or any other fixtures not expressly included form part of the property offered for sale. This computer generated Floorplan, if applicable, is intended as a general guide to the layout and design of the property. It is not to scale and should not be relied upon for dimensions. Tenure: We cannot confirm the tenure of the property as we have not had access to the legal documents. The buyer is advised to obtain verification from their solicitor or surveyor.

Peter Alan Limited is registered in England and Wales under company number 2073153, Registered Office is Cumbria House, 16-20 Hockliffe Street, Leighton Buzzard, Bedfordshire, LU7 1GN. VAT Registration Number is 500 2481 05. For activities relating to regulated mortgages and non-investment insurance contracts, Peter Alan Limited is an appointed representative of Connells Limited which is authorised and regulated by the Financial Conduct Authority. Connells Limited's Financial Services Register number is 302221. Most buy-to-let