

HS HAIR & SON

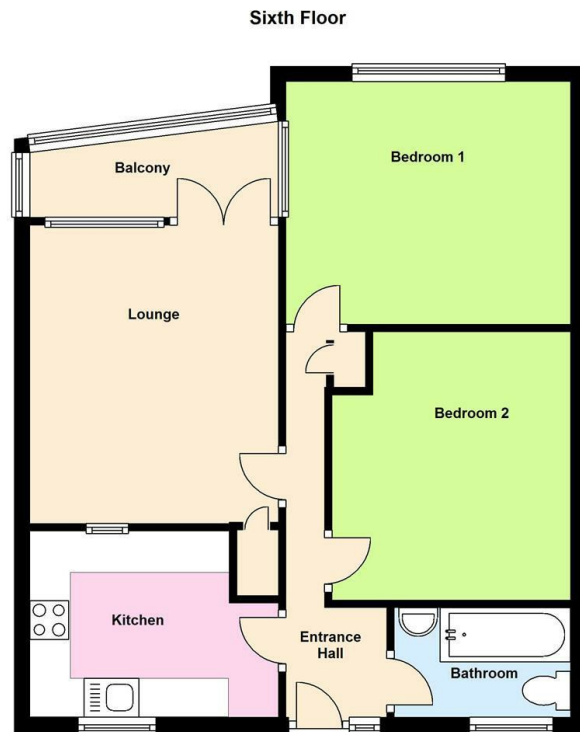


London Road , Westcliff-on-Sea SS0 9HX

- PURPOSE BUILT 6TH FLOOR FLAT
- LOUNGE WITH SMALL BALCONY
- PERFECT FOR FIRST TIME BUYER OR INVESTORS
- CAR PARK
- TWO BEDROOMS
- ELECTRIC HEATING
- WALKING DISTANCE TO CHALKWELL PARK AND CHALKWELL STATION
- NO ONWARD CHAIN

Guide Price £180,000 Leasehold

Local Authority **Southend on Sea Borough Council**
Council Tax Band **B**
EPC Rating **D**



Sales Office
190 London Road, Southend-On-Sea,
Essex, SS1 1PJ

Contact
01702 34 11 77
<https://hairandson.co.uk/>

Agents Note: Whilst every care has been taken to prepare these particulars, they are for guidance purposes only. All measurements are approximate and for general guidance purposes only and whilst every care has been taken to ensure accuracy, they should not be relied upon and potential buyers/tenants are advised to recheck the measurements.