

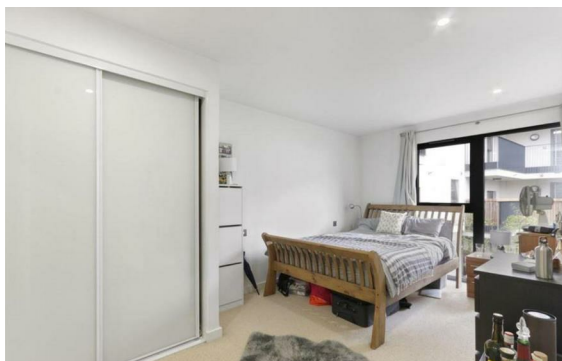


**Portnall Road, Queen's Park, London, W9**

Rent £995 Per Month

2 Bed | 2 Bath | 1 Reception

*Please call us on 020 7724 2233 or email us [info@newingtonstates.com](mailto:info@newingtonstates.com) to book a viewing.*



A spacious two-bedroom, two-bathroom apartment set on the popular residential Portnall Road, soon to be freshly redecorated throughout.

Positioned on the ground floor and offering close to 1,000 sq ft of living space, the property comprises two good-sized double bedrooms, two bathrooms, a separate kitchen, and a generous hallway leading through to a dining area and bright reception room. The reception opens directly onto a private decked garden, making it a lovely home with excellent indoor and outdoor space.

### Energy Efficiency Rating: D

Agents Note: Whilst every care has been taken to prepare these particulars, they are for guidance purposes only. All measurements are approximate and are for general guidance purposes only and whilst every care has been taken to ensure their accuracy, they should not be relied upon and potential buyers/tenants are advised to recheck the measurements.



60 Upper Montagu Street

London

W1H 1SN

020 7724 2233

[info@newingtonstates.com](mailto:info@newingtonstates.com)

<http://www.newingtonstates.com>