



Queen Annes Grove, London, W4  
Guide Price £2,850,000

**WHITMAN & CO.**  
SALES · LETTINGS · COMMERCIAL



An outstanding Grade II listed period home designed by E. J. May, boasting a 75' west-facing garden and double garage, ideally located on this premier residential road in the heart of the Bedford Park Conservation Area. The accommodation comprises four/five bedrooms, two bathrooms, a roof terrace, a large entrance hall, two elegant reception rooms, a cloakroom, and a 26' kitchen/breakfast room.

The plot extends to Marlborough Crescent at the rear, providing garage access, which benefits from planning consent for the demolition of the existing garage/workshop and its replacement by a brick-built habitable studio.

Situated within close proximity of Turnham Green Tube Station and the extensive range of shops, bars, and restaurants on Chiswick High Road. No onward chain.



# Queen Anne's Grove, W4

Approximate gross internal area

223.93 sq m / 2410 sq ft

(Including Garage)

Garage : 28.08 sq m / 302 sq ft

Key :

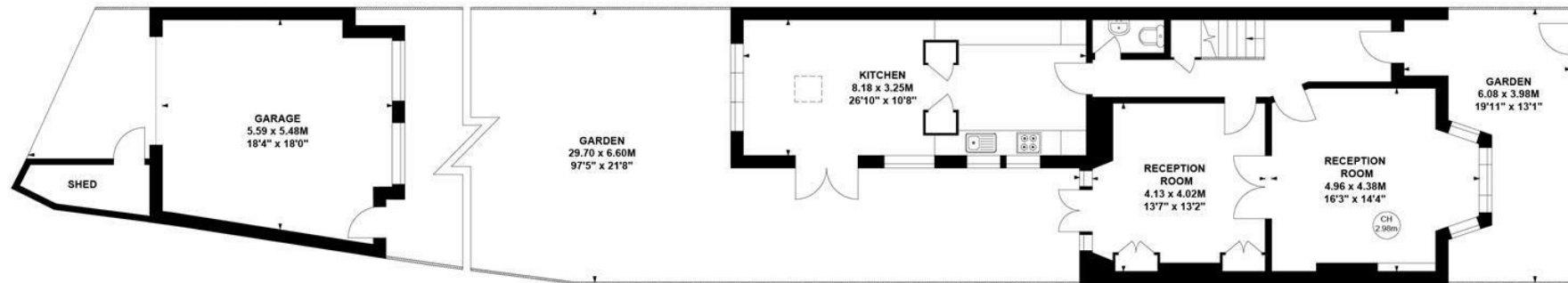
CH - Ceiling Height



Second Floor



First Floor



Ground Floor

Not to scale, for guidance only and must not be relied upon as a statement of fact.

All measurements and areas are approximate only

- Spectacular Grade II listed house
- Bedford Park Conservation Area
- Planning for a habitable studio

- 75' west facing garden
- Host of original features
- No onward chain

Tenure - Freehold  
Local Authority - Ealing  
Council Tax - Band H

