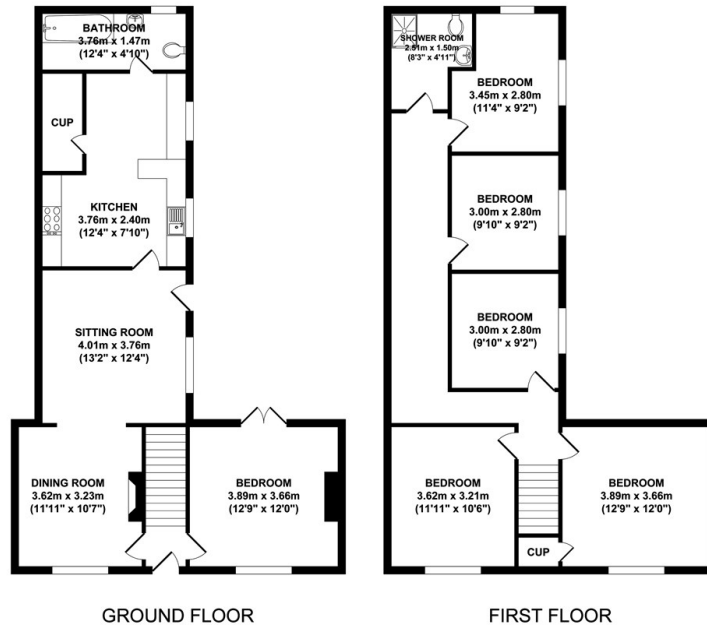


## 4 Dragwell, Kegworth, Derby, DE74 2EL

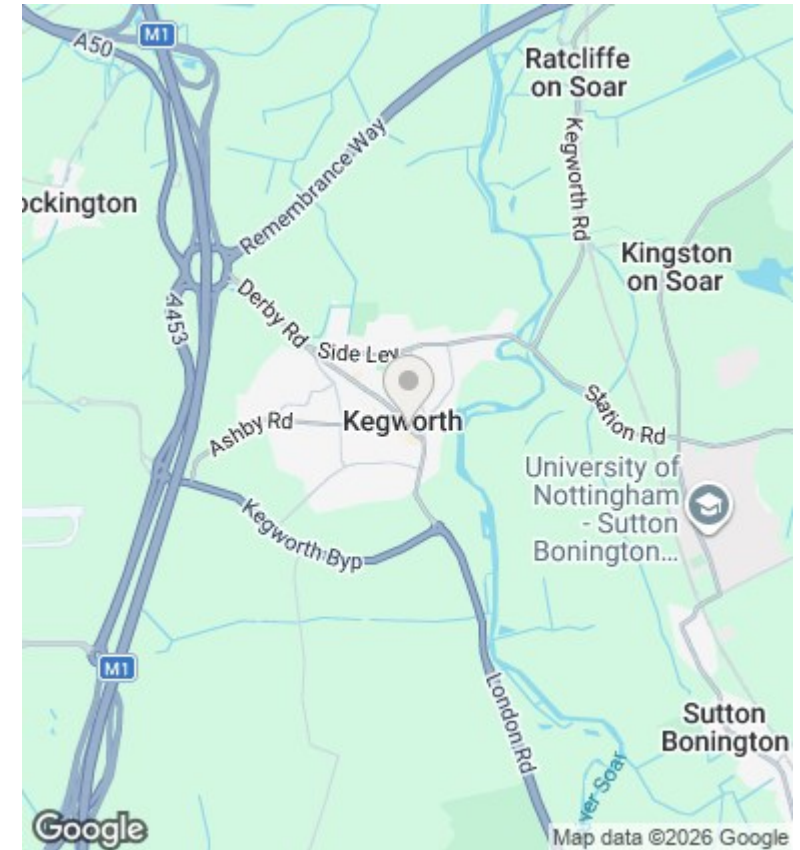
£3,200 PCM

- Very central
- Modern kitchen with all white goods
- Fully furnished
- Lots of communal living space
- Maintenance free garden courtyard
- Very close to local shops and main bus stop
- 6 double bedrooms
- 2 bathrooms

## 4 Dragwell



Whilst every attempt has been made to ensure the accuracy of the floor plan contained here, measurements of doors, windows, rooms and any other items are approximate and no responsibility is taken for any error, omission, or mis-statement. This plan is for illustrative purposes only and should be used as such by any prospective purchaser. The services systems and appliance shown have not been tested and no guarantee as to their operability or efficiency can be given.



## Directions

## Viewings

Viewings by arrangement only. Call 01509 674140 to make an appointment.

## Council Tax Band

D

## EPC Rating:

E

Energy Efficiency Rating		Current	Potential
<i>Very energy efficient - lower running costs</i>			
(92 plus) <b>A</b>			
(81-91) <b>B</b>			
(69-80) <b>C</b>			<b>72</b>
(55-68) <b>D</b>			
(39-54) <b>E</b>		<b>49</b>	
(21-38) <b>F</b>			
(1-20) <b>G</b>			
<i>Not energy efficient - higher running costs</i>			
<b>England &amp; Wales</b>		EU Directive 2002/91/EC	