

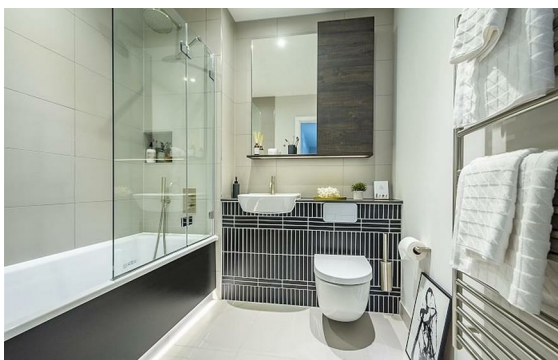
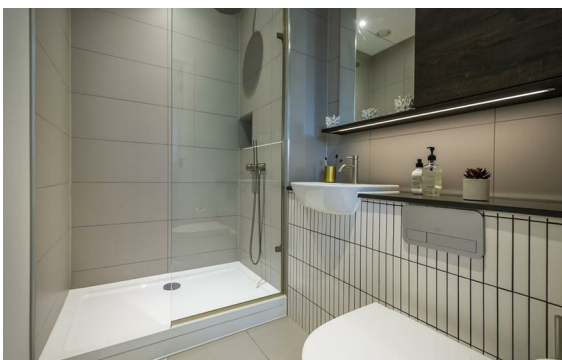
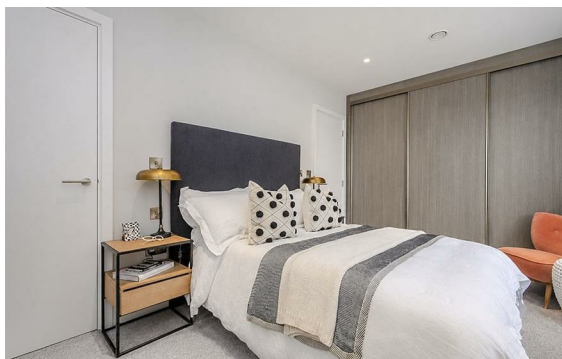


George Street, Marylebone, London, W1U

Rent £1,235 PCM

2 Bed | 2 Bath | 1 Reception

Please call us on 020 7724 2233 or email us info@newingtonstates.com to book a viewing.



Bright apartment in the heart of Marylebone. The property features a bright open-plan reception and kitchen, two well-proportioned double bedrooms with fitted wardrobes, and two bathrooms, including an en-suite shower room to the principal bedroom. Wooden flooring, air conditioning, and large windows create a bright and comfortable living environment.

Ideally located moments from Marylebone High Street, with excellent transport links and a wide range of cafés, restaurants, and boutique shops nearby.

EPC Rating: B

Energy Efficiency Rating: B

Agents Note: Whilst every care has been taken to prepare these particulars, they are for guidance purposes only. All measurements are approximate and are for general guidance purposes only and whilst every care has been taken to ensure their accuracy, they should not be relied upon and potential buyers/tenants are advised to recheck the measurements.



60 Upper Montagu Street

London

W1H 1SN

020 7724 2233

info@newingtonstates.com

<http://www.newingtonstates.com>