

Jonathan Hunt

ESTATE AGENCY

20 High Street Ware SG12 9BX

Tel: 01920 411090

8 High Street Buntingford SG9 9AG

Tel: 01763 272727

info@jonathan-hunt.co.uk

www.jonathanhunt.co.uk



10 Upper Clabdens, Ware, SG12 7HB

£550,000

JONATHAN HUNT are pleased to offer this well presented THREE BEDROOM extended semi detached home. The property features a wonderful OPEN PLAN KITCHEN with Utility area and a very useful Lean-to for excellent storage. Further benefits include a ground floor Cloakroom, refitted Shower room, Gas central heating and a generous well stocked rear garden.

Buntingford Branch - Company No. 10303541 VAT No. 10303541

Ware Branch - Company No. 4759215 VAT No. 700174975

10 Upper Clabdens, Ware, SG12 7HB

ENTRANCE HALLWAY



KITCHEN



LIVING ROOM 16'4" x 11'9" (5 x 3.6)



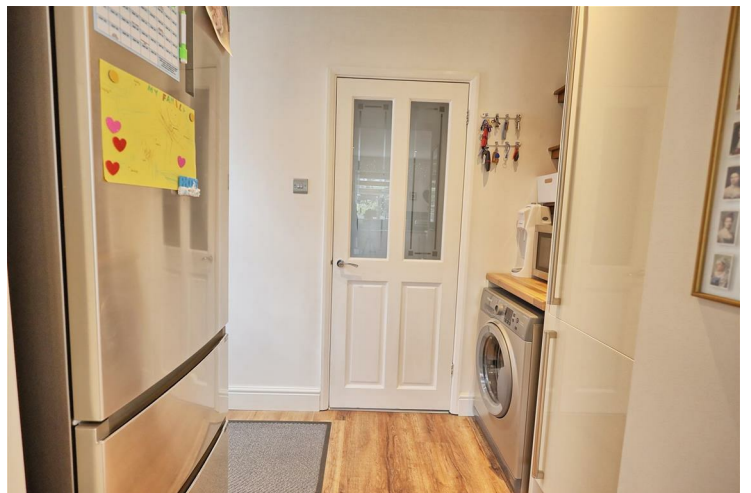
DINING AREA



KITCHEN/DINING ROOM 18'5" x 16'9" max (5.62 x 5.13 max)



UTILITY AREA



10 Upper Clabdens, Ware, SG12 7HB

FIRST FLOOR



BEDROOM THREE 9'10" x 7'10" (3 x 2.4)



BEDROOM ONE 13'1" x 10'8" incl wards (4 x 3.27 incl wards)



SHOWER ROOM



BEDROOM TWO 10'8" x 10'6" (3.27 x 3.22)



LEAN-TO 29'6" x 6'6" (9 x 2)



10 Upper Clabdens, Ware, SG12 7HB

REAR GARDEN



REAR ASPECT



GARDENS



EXTERIOR



STORAGE SHEDS



PATIO



DRIVEWAY

10 Upper Clabdens, Ware, SG12 7HB

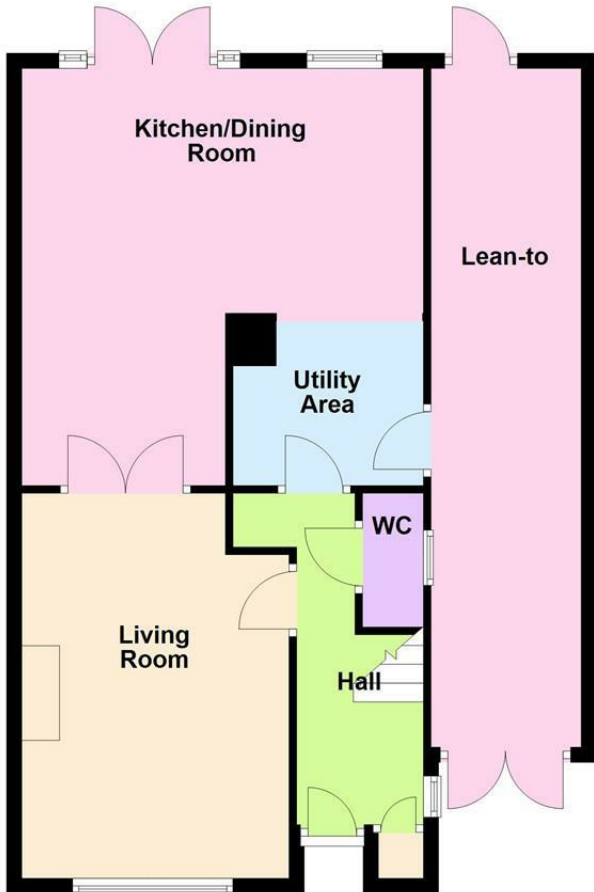


Energy Efficiency Rating		Current	Potential
Very energy efficient - lower running costs			
(92 plus) A			
(81-91) B			
(69-80) C			
(55-68) D			
(39-54) E			
(21-38) F			
(1-20) G			
Not energy efficient - higher running costs			
England & Wales	EU Directive 2002/91/EC		

Environmental Impact (CO ₂) Rating		Current	Potential
Very environmentally friendly - lower CO ₂ emissions			
(92 plus) A			
(81-91) B			
(69-80) C			
(55-68) D			
(39-54) E			
(21-38) F			
(1-20) G			
Not environmentally friendly - higher CO ₂ emissions			
England & Wales	EU Directive 2002/91/EC		

Ground Floor

Approx. 74.8 sq. metres (805.0 sq. feet)



First Floor

Approx. 41.1 sq. metres (442.5 sq. feet)



Total area: approx. 115.9 sq. metres (1247.5 sq. feet)

Whilst every attempt has been made to ensure the accuracy of the floor plan contained here, measurements of doors, windows, rooms and any other item are approximate and no responsibility is taken for any error, omission, or misstatement. This plan is for illustrative purposes only and should only be used as such by any prospective purchaser.
Plan produced using PlanUp.