



THE YEWS, BURFORD

CHARTWELL  
COVENTRY ROAD  
BURFORD, OXFORDSHIRE  
OX9 3JG

NO  
PARKING



# AN EXCEPTIONAL CLASSIC COTSWOLD HOME WITH GARAGE.

Distances - Oxford (19 miles), Cirencester (19 miles), and Cheltenham (22 miles). Mainline rail services to London Paddington (from 70 minutes) are available at Charlbury (8 miles), Kingham (8 miles), and Kemble (22 miles). Distances and times are approximate.



4



4



3

EPC

C

Local Authority: West Oxfordshire District Council

Council Tax band: F

Tenure: Freehold



## HISTORICAL CONSERVATION GRADE II LISTED RENOVATION

The Yews has undergone extensive refurbishment over the last 18 months in order to bring this spectacular Grade II listed building back to glory. Now It now offering contemporary living whilst retaining all the character of a classic Cotswold home, complete with the rare benefit of garaging.

This charming property combines exceptional attention to detail with light-filled interiors and a south-facing garden. The ground floor features a large open-plan sitting and media room with bay windows, a feature fireplace, and stunning oak flooring with underfloor heating. To the rear, an impressive kitchen extension includes bespoke cabinetry, a generous pantry, and an inviting breakfast area, flowing seamlessly into a bright garden room overlooking the terrace. A well-equipped utility and cloakroom complete the ground floor.







## LIGHT AND SPACIOUS THROUGHOUT

Upstairs, there are four generous double bedrooms, each with en suite facilities. The principal suite boasts a dressing area and luxurious bathroom with vaulted ceiling. The second floor offers additional versatile space, ideal for a home office or children's playroom alongside the two bedroom suites.

Outside, the property enjoys a pretty front garden, rear terrace for al fresco dining, a raised lawn, and a superb outbuilding perfect as a home office or studio. The project garage includes planning consent for a storage deck (West Oxon ref: 24/02292/LBC).

### Services

The property benefits from mains water, electricity and drainage.

### Fixtures and fittings

Only those mentioned in these sales particulars are included in the sale. All others, such as fitted curtains, light fittings, garden ornaments etc., are specifically excluded but may be made available by separate negotiation.

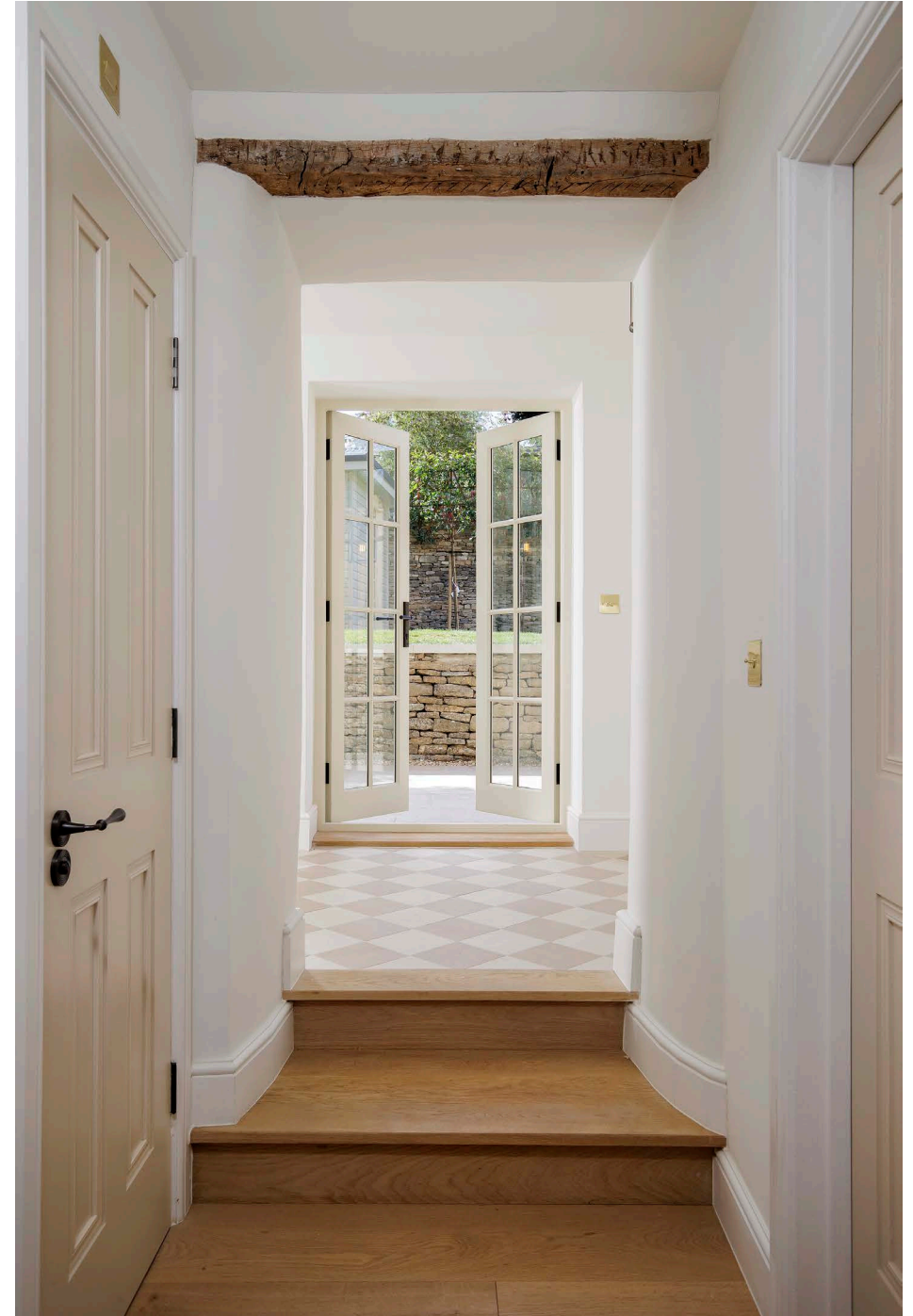






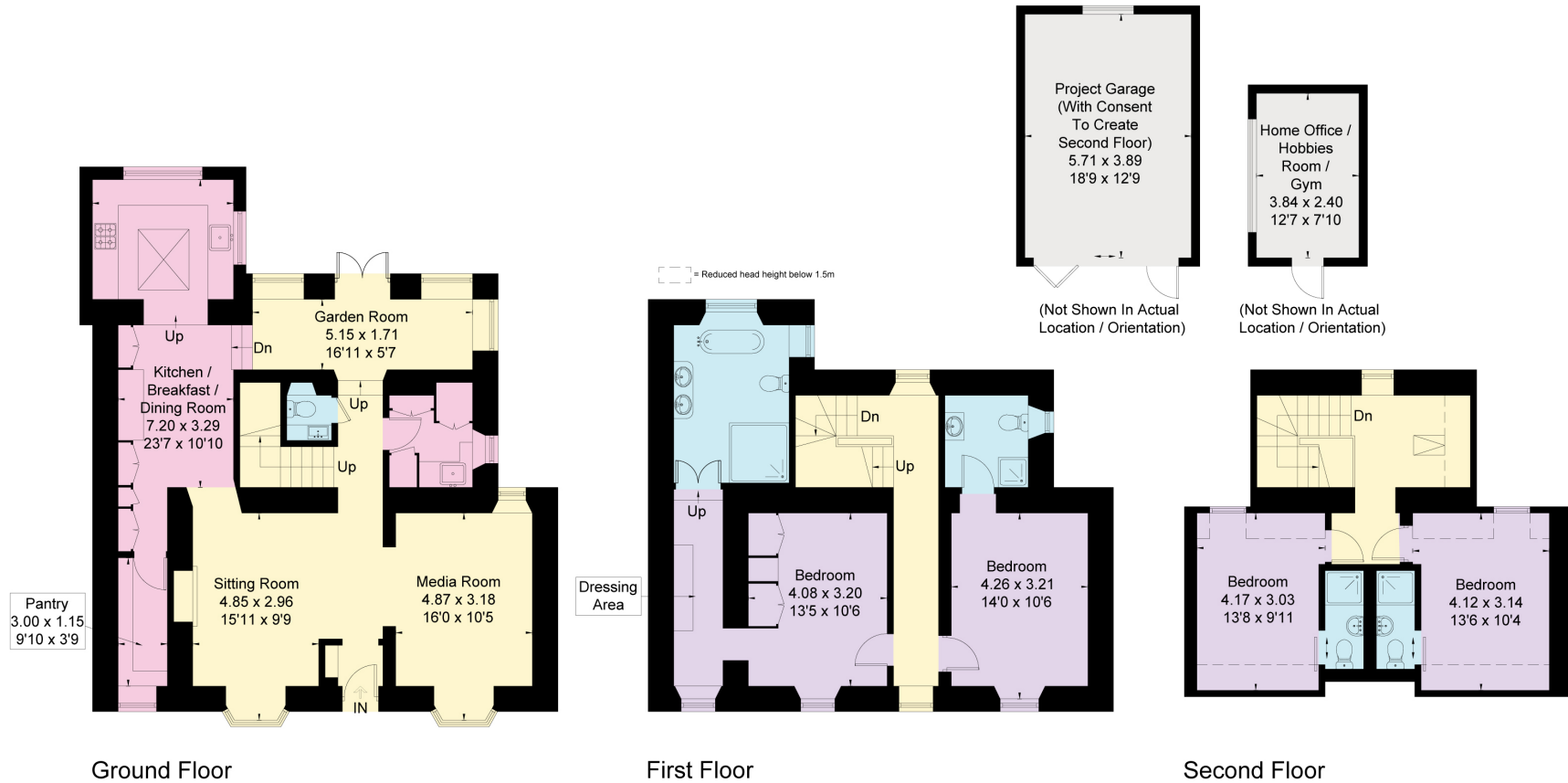
## LOCATION

The Yews in the heart of Burford, which lies within an Area of Outstanding Natural Beauty and Conservation Area. The town offers a wide range of amenities, including a bakery, butcher, post office, general store, and doctor's surgery, along with antique shops, boutiques, restaurants, and traditional coaching inns. The North Cotswolds is celebrated for its exceptional lifestyle, offering a wealth of recreational, sporting, and cultural opportunities. Cheltenham Racecourse is just a short drive away. Golfers are well catered for with excellent courses at Naunton Downs, Burford, and Lyneham, while top-flight rugby can be enjoyed in nearby Gloucester. Nature lovers will find miles of walking, cycling, and equestrian trails criss-crossing the surrounding countryside, while the cultural calendar is filled with highlights such as the Cheltenham Literature Festival, Wilderness Festival, The Big Festival, and numerous local art, music, and theatre events.





Approximate Floor Area = 207.2 sq m / 2230 sq ft  
 Outbuildings = 31.5 sq m / 339 sq ft  
 Total = 238.7 sq m / 2569 sq ft



This floor plan has been drawn in accordance with RICS Property Measurement 2nd edition.  
 All measurements, including the floor area, are approximate and for illustrative purposes only. @fourwalls-group.com #95733

(Including Basement / Loft Room)  
 Approximate Gross Internal Area = 686.3 sq m / 7387 sq ft

This plan is for layout guidance only. Not drawn to scale unless stated. Windows and door openings are approximate. Whilst every care is taken in the preparation of this plan, please check all dimensions, shapes and compass bearings before making any decisions reliant upon them. (ID767266)



Leigh Glazebrook

01451 600613

leigh.glazebrook@knightfrank.com

Stow on the Wold

Brett House, Park Street

GL54 1AG

[knightfrank.co.uk](https://www.knightfrank.co.uk)

Your partners in property

1. Particulars: These particulars are not an offer or contract, nor part of one. You should not rely on statements given by Knight Frank in the particulars, by word of mouth or in writing ("information") as being factually accurate about the property, its condition or its value. Neither Knight Frank nor any joint agent has any authority to make any representations about the property, and accordingly any information given is entirely without responsibility on the part of Knight Frank. 2. Material Information: Please note that the material information is provided to Knight Frank by third parties and is provided here as a guide only. While Knight Frank has taken steps to verify this information, we advise you to confirm the details of any such material information prior to any offer being submitted. If we are informed of changes to this information by the seller or another third party, we will use reasonable endeavours to update this as soon as practical. 3. Photos, Videos etc: The photographs, property videos and virtual viewings etc. show only certain parts of the property as they appeared at the time they were taken. Areas, measurements and distances given are approximate only. 4. Regulations etc: Any reference to alterations to, or use of, any part of the property does not mean that any necessary planning, building regulations or other consent has been obtained. A buyer must find out by inspection or in other ways that these matters have been properly dealt with and that all information is correct. 5. Fixtures and fittings: A list of the fitted carpets, curtains, light fittings and other items fixed to the property which are included in the sale (or may be available by separate negotiation) will be provided by the Seller's Solicitors. 6. VAT: The VAT position relating to the property may change without notice. 7. To find out how we process Personal Data, please refer to our Group Privacy Statement and other notices at <https://www.knightfrank.com/legals/privacy-statement>.

Particulars dated September 2025. Photographs dated September 2025. All information is correct at the time of going to print. Knight Frank is the trading name of Knight Frank LLP. Knight Frank LLP is a limited liability partnership registered in England and Wales with registered number OC305934. Our registered office is at 55 Baker Street, London W1U 8AN. We use the term 'partner' to refer to a member of Knight Frank LLP, or an employee or consultant. A list of members names of Knight Frank LLP may be inspected at our registered office. If you do not want us to contact you further about our services then please contact us by either calling 020 3544 0692, email to [marketing.help@knightfrank.com](mailto:marketing.help@knightfrank.com) or post to our UK Residential Marketing Manager at our registered office (above) providing your name and address.

