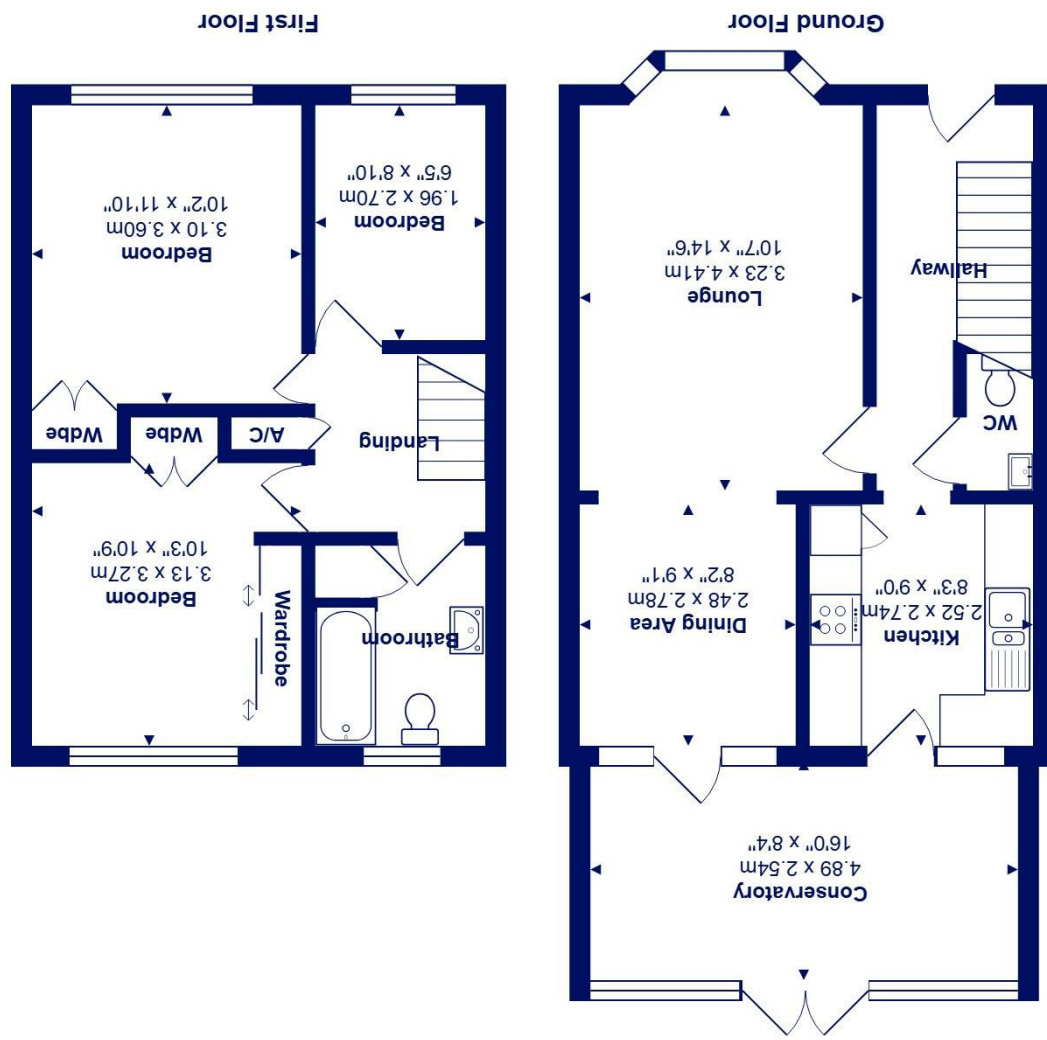




All measurements are approximate and for display purposes only
Total Area: 89.7 m² ... 965 ft²



25 Caxton Close, BH23 3RP

£329,950

Mitchells
1963 — TODAY

A very nicely presented and tucked away, mid terrace house of about 965 sq ft which has been extended with a vaulted conservatory extension. The property has been recently redecorated and enjoys a sunny rear garden with a garage in a nearby block.

Caxton Close is a very convenient location being just around the corner from Marks and Spencers, Lidl and Aldi and also on the main bus route to Christchurch town centre.

- Smart, Georgian style town house in quiet location
- Three first floor bedrooms and a family bathroom
- Bright and airy sitting room that leads to the conservatory extension
- Fitted kitchen with slot in induction cooker
- Vaulted conservatory extension
- Nicely landscaped garden with patio and lawn, trades gate that leads to the garaging
- Gas fired heating, UPVC double glazed windows
- Garage and casual parking

EPC Rating Band: C
Council Tax Band: C
Freehold

Successful buyers will be required to complete online identity checks provided by Lifetime Legal. The cost of these checks is £49 inc. VAT per purchase which is paid in advance, directly to Lifetime Legal. This check verifies your identity in line with our obligations as stipulated by our regulatory body, HMRC

