



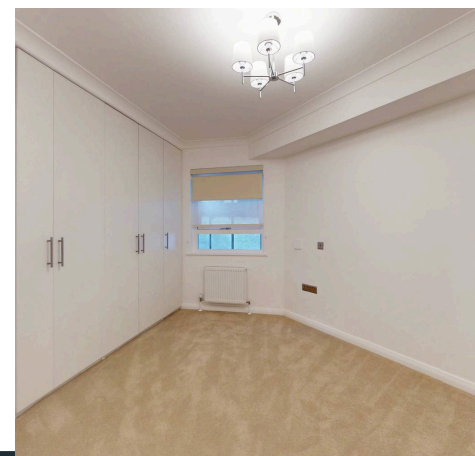
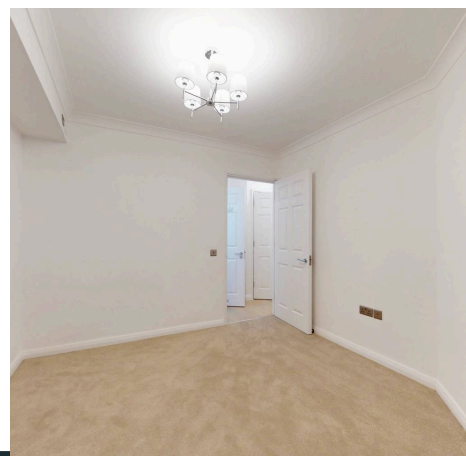
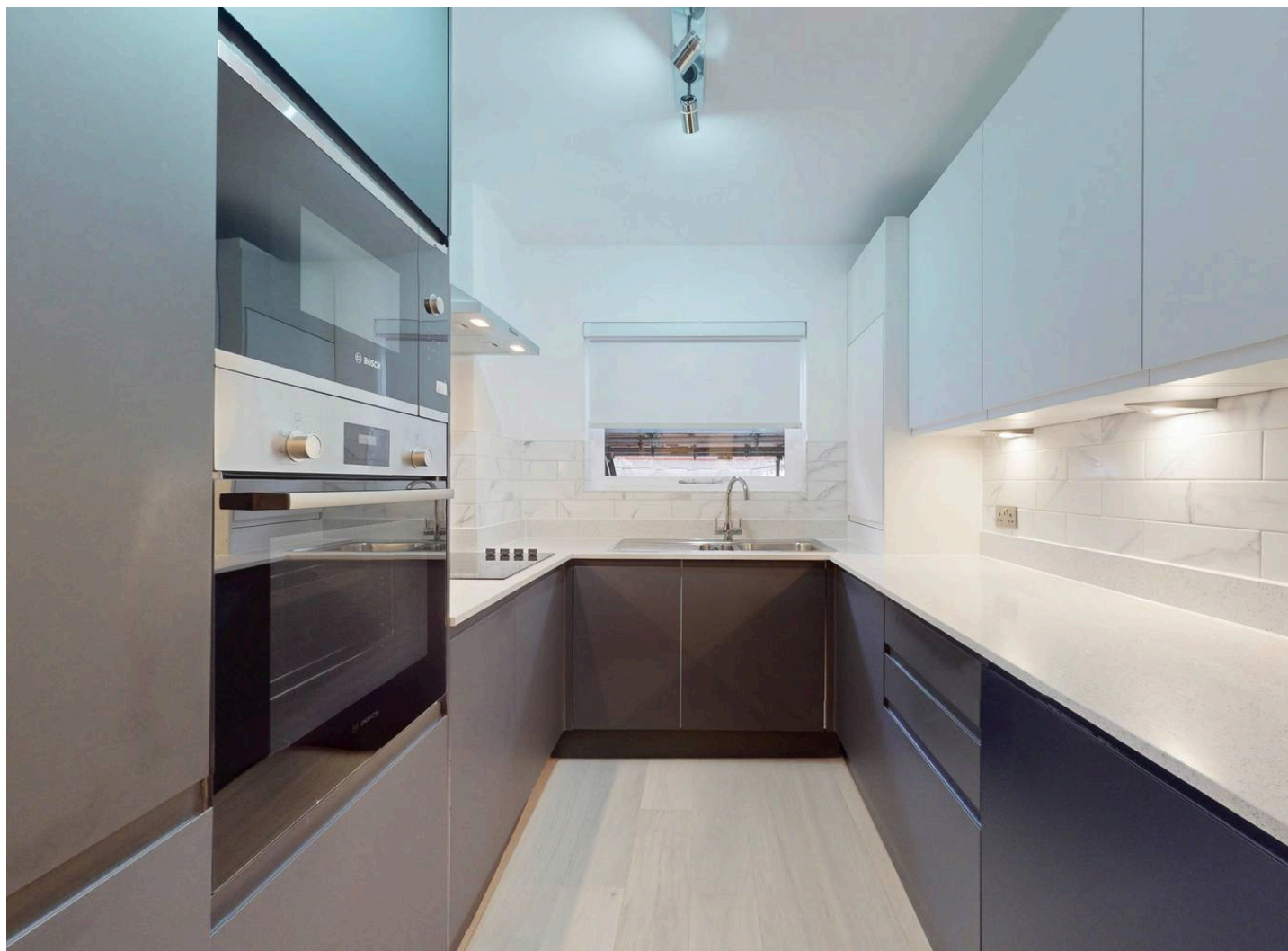
Pearl & Chance

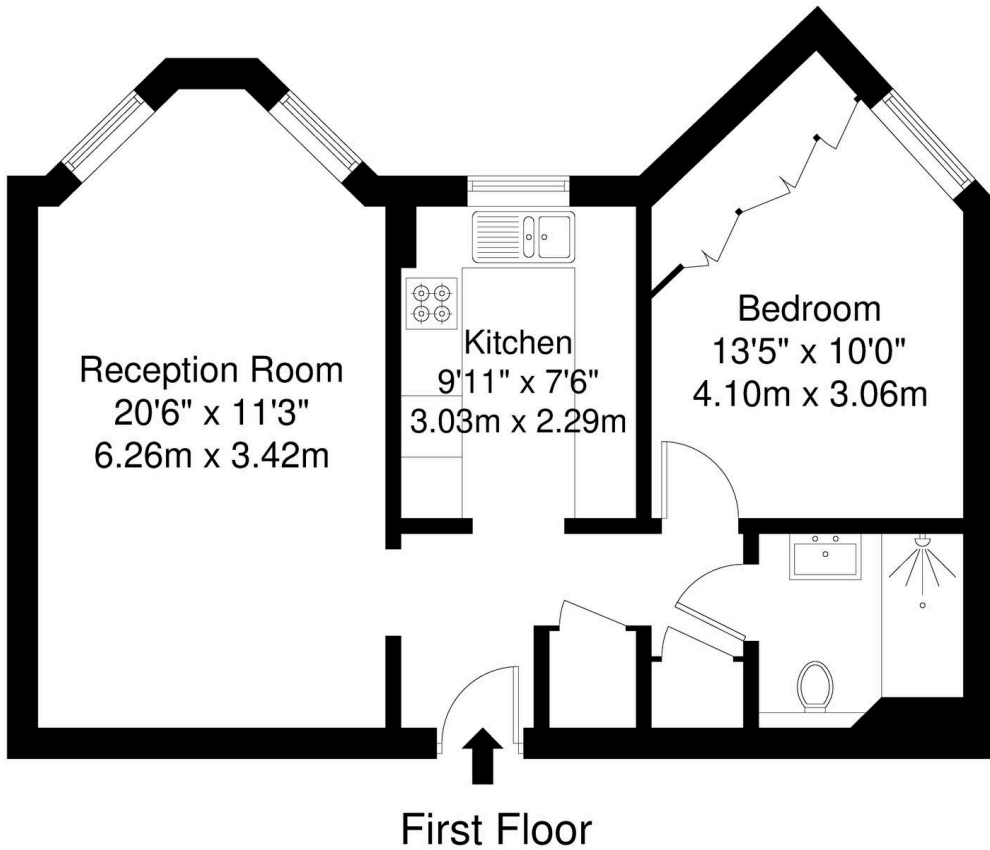
Heathside, Finchley Road, NW11  
£2,850 pcm


## Heathside, Finchley Road, NW11

A newly refurbished one bedroom second-floor flat with lift access, set within the popular Heathside Development. Bright throughout with large windows, a modern kitchen, built-in wardrobes, and separate storage housing a washer and dryer. Rent includes heating, hot water, broadband, and TV licence. Secure entry, on-site manager, caretaker, residents' lounge, and therapy facilities. Well located for Golders Green, Hampstead Heath, and excellent transport links into Central London.

- Available Now
- Deposit £3,288
- Retirement Flat
- Newly Refurbished
- One Bedroom
- Second Floor
- Lift Access
- Close to Shops
- On-Site House Manager
- Residents Lounge





Energy Efficiency Rating		
	Current	Potential
<i>Very energy efficient - lower running costs</i>		
(92+) <b>A</b>		
(81-91) <b>B</b>		
(69-80) <b>C</b>	<b>70</b>	<b>79</b>
(55-68) <b>D</b>		
(39-54) <b>E</b>		
(21-38) <b>F</b>		
(1-20) <b>G</b>		
<i>Not energy efficient - higher running costs</i>		
<b>England, Scotland &amp; Wales</b>		EU Directive 2002/91/EC 

Heathside, Finchley Road, NW11

Total Gross Internal Area = 50.5 sq m / 543 sq ft

All Measurements are approximate and for identification guideline purposes only, not to scale.  
Compliant with the RICS code of measuring practice



## Pearl & Chance

1 Hoop Lane, London - NW11 8JR

0208 059 5559

[info@pearlandchance.co.uk](mailto:info@pearlandchance.co.uk)

<http://pearlandchance.co.uk>



IMPORTANT: These sales particulars have been prepared as a general guide only. A detailed survey has not been carried out, nor the services, appliances and fittings tested. Room sizes should not be relied upon for furnishing purposes and are approximate. If floor plans are included, they are for guidance only and illustration purposes only and may not be to scale. If there are any important matters likely to affect your decision to buy, please contact us before viewing the property.