

for sale

£280,000



Fontmell Close Swindon SN25 2PE

A beautifully presented **THREE BEDROOM SEMI-DETACHED HOME** located in the highly sought-after Redhouse development in North Swindon, offering spacious and versatile accommodation ideal for modern family living. **DRIVEWAY PARKING**



Fontmell Close Swindon SN25 2PE

Ground Floor Accommodation

Entrance Hall

Double glazed door to the front aspect Stairs rising to the first floor accommodation

Cloakroom

Two piece suite comprising of Low Level WC and wash hand basin. Radiator.

Lounge

16' x 9' 6" (4.88m x 2.90m)
Double glazed French doors to the rear garden. Double glazed window. Radiator.

Kitchen/Diner

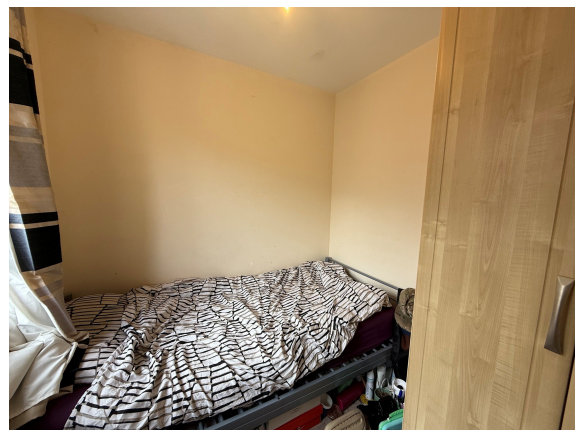
16' x 8' 9" (4.88m x 2.67m)
Double glazed window. Fully fitted kitchen with a range of base and wall mounted units comprising of cupboards and drawers. One and a half sink with drainer and mixer tap. Integrated four ring gas hob, oven and cooker hood.

Utility Room

6' 5" x 5' 5" (1.96m x 1.65m)
Double glazed door to the rear garden. Base units with work tops. Space and plumbing for washing machine.

First Floor Accommodation

First Floor Landing



Bedroom One

10' 4" x 9' 1" (3.15m x 2.77m)

Double glazed window . Access to the ensuite shower room.
Built-in-storage cupboard. Radiator.

Ensuite

Three piece suite comprising of Low Level WC, wash hand basin
and shower. Partially tiled to water sensitive areas.

Bedroom Two

9' 4" x 8' 10" (2.84m x 2.69m)

Double glazed window. Built-in-wardrobes. Loft hatch. Radiator.

Bedroom Three

7' 4" x 6' 8" (2.24m x 2.03m)

Double glazed window. Built-in-wardrobes. Radiator.

Bathroom

Obscure double glazed window. Three piece suite comprising of
Low level WC, wash hand basin and panelled bath. Partially tiled
to water sensitive areas. Radiator.

External Features

Garden

Fenced boundaries. Laid to artificial lawn and patio. Patio steps
to the lawn area. Shed

Parking

Driveway parking to the front of the property



To view this property please contact Connells on

T 01793 708050
E swindonnorth@connells.co.uk

Unit B11 North Swindon District Centre Thamesdown Drive
SWINDON SN25 4AN

Property Ref: SDN314926 - 0002

Tenure:Freehold EPC Rating: Awaited

Council Tax Band: D

view this property online
connells.co.uk/Property/SDN314926



1. MONEY LAUNDERING REGULATIONS Intending purchasers will be asked to produce identification documentation at a later stage and we would ask for your co-operation in order that there will be no delay in agreeing the sale. 2. These particulars do not constitute part or all of an offer or contract. 3. The measurements indicated are supplied for guidance only and as such must be considered incorrect. Potential buyers are advised to recheck measurements before committing to any expense. 4. We have not tested any apparatus, equipment, fixtures, fittings or services and it is in the buyers interest to check the working condition of any appliances.

Connells Residential is registered in England and Wales under company number 1489613, Registered Office is Cumbria House, 16-20 Hockliffe Street, Leighton Buzzard, Bedfordshire, LU7 1GN. VAT Registration Number is 500 2481 05.

see all our properties at www.connells.co.uk | www.rightmove.co.uk | www.zoopla.co.uk