



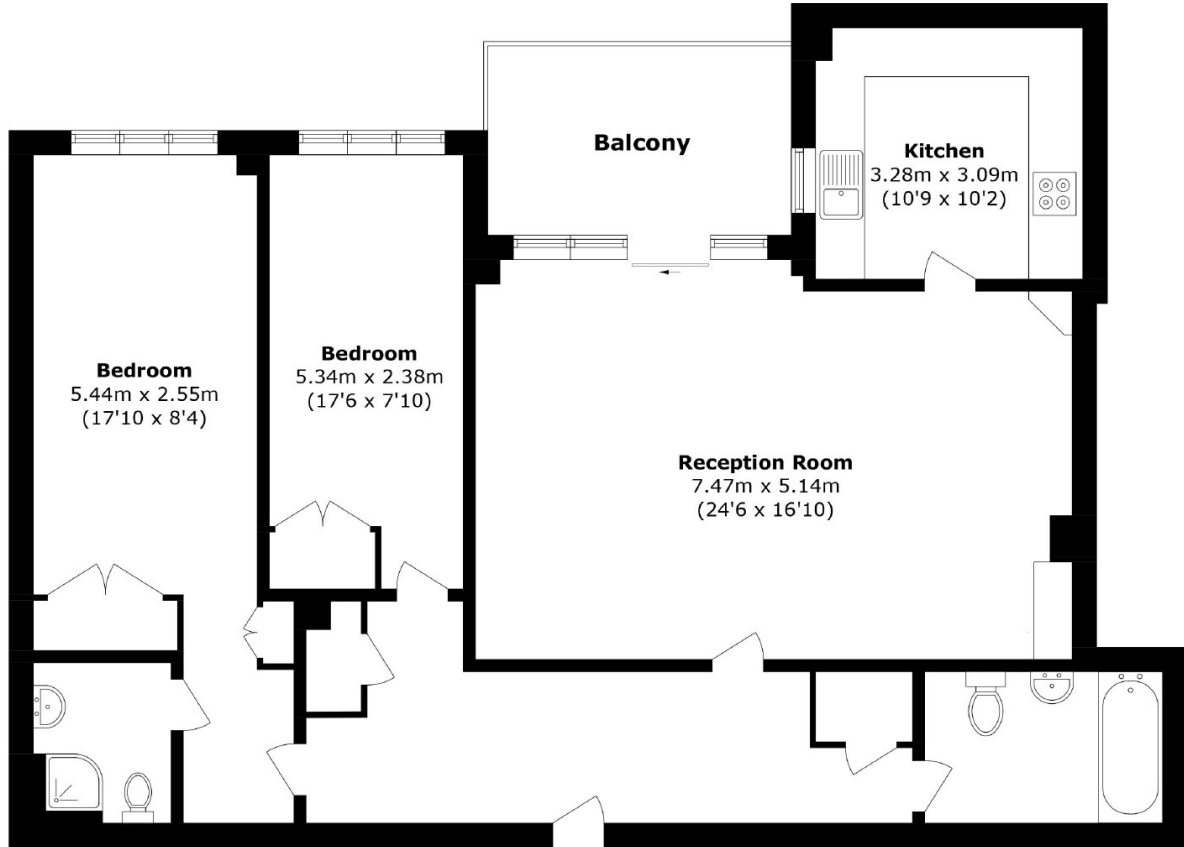
Knighten Street, E1W

£3,000 Per month

 2  1  2  C

- Two Bedroom
- Two Bathroom
- Balcony

- Communal Courtyard
- Porter
- Underground Parking



Total area (approx.): 106.6 sq. m (1147.4 sq. ft)
Balcony area (approx.): 8.4 sq. m (90.4 sq. ft)

35A Wapping High Street,
London, E1W 1NR
020 7702 3456
ea2group.com