



## London Road, SE1

### £330,000

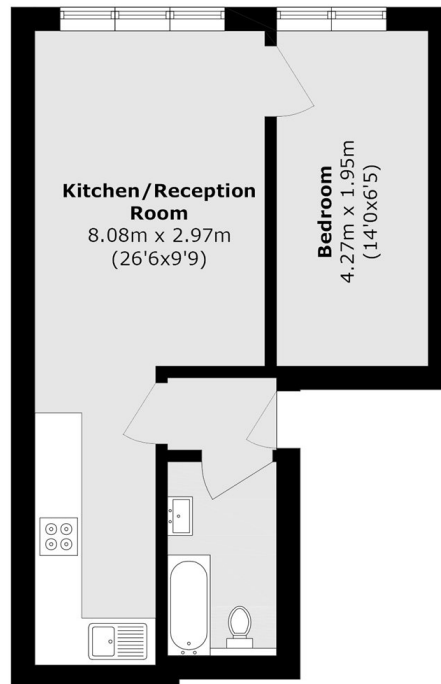
A highly attractive one bedroom Georgian Conversion in the St Georges Circus conservation area with a bright open plan living room and kitchen, and a three piece bathroom. Sold chain free with a newly extended lease and low service charges.

Enviably located next to St Georges Circus, Blackfriars Road and Waterloo Road, close by to Lower Marsh, the Cut and the South Bank, with it's numerous attractions, theatres and restaurants. There is easy access to Waterloo, Southwark, Elephant & Castle and Blackfriars Stations, with transport links across London

### Features

- Chain Free Sale
- Second Floor Flat
- One Bedroom
- Open Plan Living Space
- Long Lease - 152 Years
- Low Service Charges
- Excellent Transport Links

# London Road, London, SE1



Total area (approx.): 32.9 sq. m (354.1 sq. ft)