



2 The Mews

Hautmont Close



2 The Mews, Hautmont Close, St Helier, JE2 4XT

Fantastic two bedroom town house, in an excellent location on the outskirts of town with all the amenities St Helier has to offer only a short stroll away.

Presented in good condition throughout, the accommodation is split over four floors. The entrance level provides the integral garage and utility room, first floor offers open plan kitchen/diner/ living room with beautiful large bay window. The second floor provides a spacious double bedroom with plentiful fitted wardrobes and the modern house bathroom with a further double bedroom and w.c on the top floor. The property has been very well maintained, with newly fitted kitchen and bathroom.

The property also benefits from excellent storage on each floor and in addition to the garage there is driveway parking for two cars and two visitors spaces to the side of the property.



Parish: St Helier

Qualification: Qualified

Tenure: Freehold

Price £599,000



- Two bedroom townhouse
- Open plan living
- Low maintenance home
- Convenient location
- Garage, storage and utility
- Two parking spaces







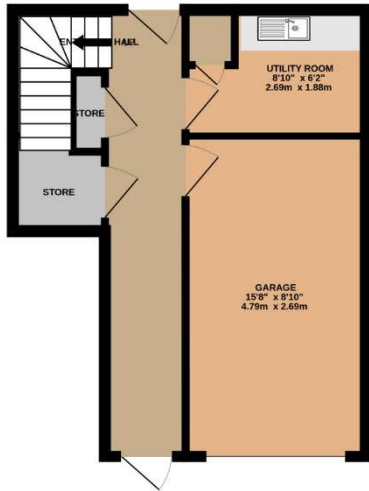




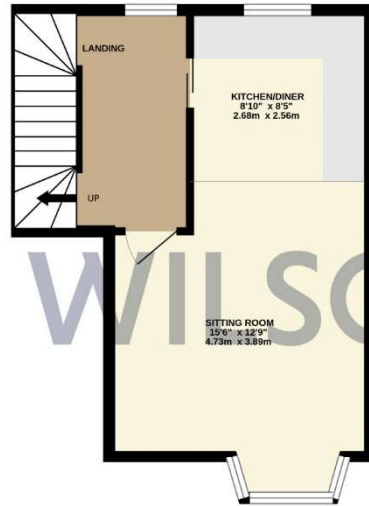




GROUND FLOOR
328 sq.ft. (30.4 sq.m.) approx.



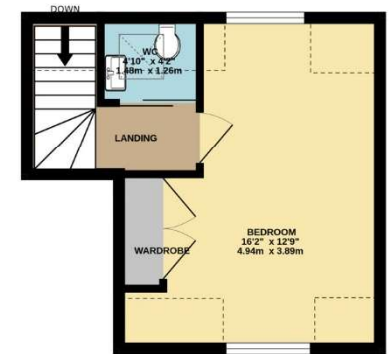
1ST FLOOR
335 sq.ft. (31.1 sq.m.) approx.



2ND FLOOR
338 sq.ft. (31.4 sq.m.) approx.



3RD FLOOR
241 sq.ft. (22.4 sq.m.) approx.



TOTAL FLOOR AREA : 1241 sq.ft. (115.3 sq.m.) approx.

Whilst every attempt has been made to ensure the accuracy of the floorplan contained here, measurements of doors, windows, rooms and any other items are approximate and no responsibility is taken for any error, omission or mis-statement. This plan is for illustrative purposes only and should be used as such by any prospective purchaser. The services, systems and appliances shown have not been tested and no guarantee as to their operability or efficiency can be given.
Made with Metropix ©2025

This plan is for layout guidance only. Not drawn to scale unless stated. Windows and door openings are approximate. Whilst every care is taken in the preparation of this plan, please check all dimensions, shapes and compass bearings before making any decisions reliant upon them.

Services

All mains services (excluding gas)

Electric heating

Underfloor heating in bathroom

Full double glazing

+441534 877977

Knight Frank Jersey

37-39 Halkett Place, St. Helier, Jersey JE2 4WG

knightfrank.je

Your partners in property

1. Particulars: These particulars are not an offer or contract, nor part of one. You should not rely on statements given by Knight Frank Jersey in the particulars, by word of mouth or in writing ("information") as being factually accurate about the property, its condition or its value. Neither Knight Frank Jersey nor any joint agent has any authority to make any representations about the property, and accordingly any information given is entirely without responsibility on the part of Knight Frank Jersey. 2. Material Information: Please note that the material information is provided to Knight Frank Jersey by third parties and is provided here as a guide only. While Knight Frank Jersey has taken steps to verify this information, we advise you to confirm the details of any such material information prior to any offer being submitted. If we are informed of changes to this information by the seller or another third party, we will use reasonable endeavours to update this as soon as practical. 3. Photos, Videos etc: The photographs, property videos and virtual viewings etc. show only certain parts of the property as they appeared at the time they were taken. Areas, measurements and distances given are approximate only. 4. Regulations etc: Any reference to alterations to, or use of, any part of the property does not mean that any necessary planning, building regulations or other consent has been obtained. A buyer must find out by inspection or in other ways that these matters have been properly dealt with and that all information is correct. 5. Fixtures and fittings: A list of the fitted carpets, curtains, light fittings and other items fixed to the property which are included in the sale (or may be available by separate negotiation) will be provided by the Seller's Lawyer. Particulars dated 08/09/2025. All information is correct at the time of going to print.

