

oakheart

£1,550 Per Month

Per Month

London Road, Capel St. Mary, Ipswich

Nestled within a desirable new development in the popular village of Capel St Mary, this stunning brand-new three-bedroom detached home offers contemporary living finished to a high standard throughout.

The property boasts spacious and well-designed accommodation, featuring a bright living area, a modern fitted kitchen with quality fixtures and fittings, and three

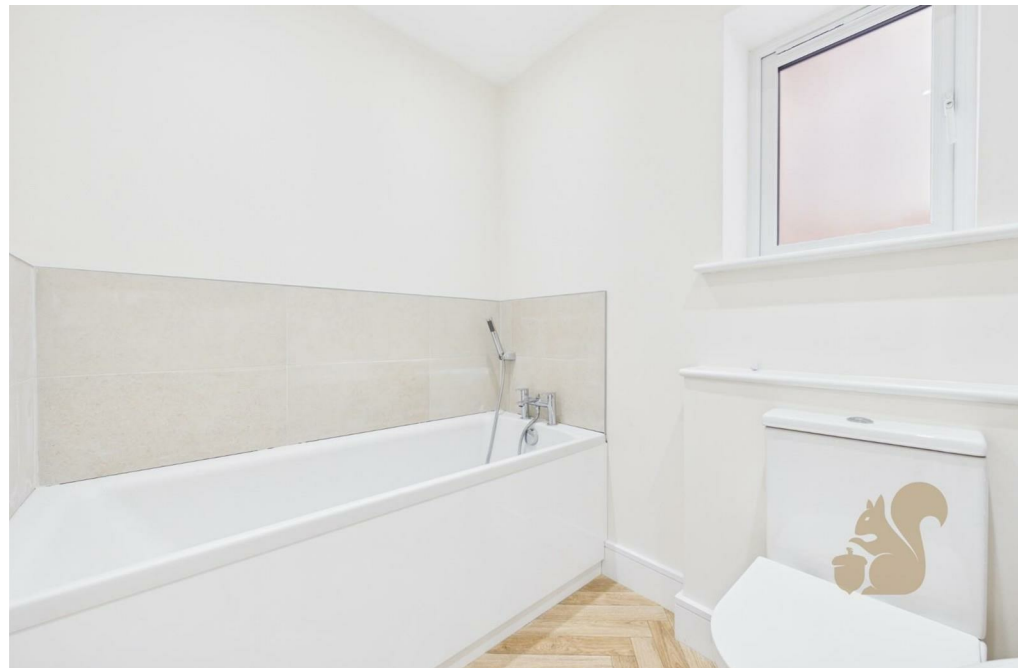
generously sized bedrooms. The home has been thoughtfully designed to suit modern family living, with stylish interiors and energy-efficient construction.

Externally, the property benefits from a private rear garden, perfect for relaxing and entertaining, along with off-road parking for two vehicles.

Ideally located within easy reach of local amenities, schools, and transport links, including convenient access to the A12, this attractive home offers the perfect balance of village living and connectivity.











Local Authority:

Tenure:

Council Tax Band:  
New Build

Energy Efficiency Rating		Current	Potential
<i>Very energy efficient - lower running costs</i>			
(92 plus) <b>A</b>			
(81-91) <b>B</b>			
(69-80) <b>C</b>			
(55-68) <b>D</b>			
(39-54) <b>E</b>			
(21-38) <b>F</b>			
(1-20) <b>G</b>			
<i>Not energy efficient - higher running costs</i>			
<b>England &amp; Wales</b>		EU Directive 2002/91/EC	

Agents Note: Whilst every care has been taken to prepare these particulars, they are for guidance purposes only. All measurements are approximate and are for general guidance purposes only and whilst every care has been taken to ensure their accuracy, they should not be relied upon.

Oakheart Ipswich Lettings  
01473 251 907  
ipswichlettings@oakheart.co.uk  
12 Upper Brook Street, Ipswich, Suffolk, IP4 1EF

**oakheart**