

£650,000 Camden Road, Islington, N7

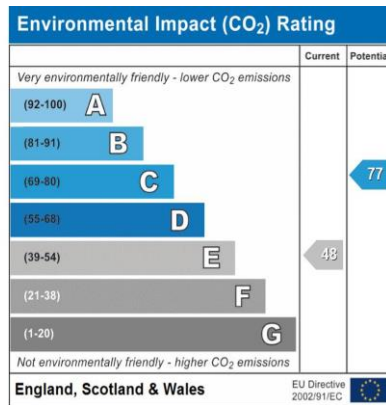
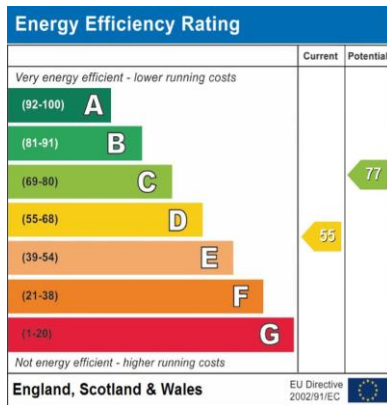


- Very Spacious
- Period Features
- Well Presented
- Modern
- Wood Floors
- Very Convenient Location
- Bright

This lovely two bedroom flat is a fantastic size being over 935 square feet and offers an opportunity to live in a central sought after area being close to the parks of North London which are within easy reach. It is situated on the first floor of an imposing semi-detached Victorian villa set back from the road with tall ceilings and wooden floors throughout and the flat itself has a stair well leading to what feels like an open plan hallway into the lounge. The lounge is exceptionally large and filled with light, with high ceilings and a feature fireplace. Off the hallway is a very useful utility room allowing for more cupboard space in the separate well fitted kitchen which has room for a breakfast bar/dining table. There is plenty of storage throughout the property and

all rooms have double glazed windows. The two good sized double bedrooms both have built in storage, tall ceilings and large windows offering lots of light, the bathroom also has a window and is a good size.

Camden Road, Islington, N7

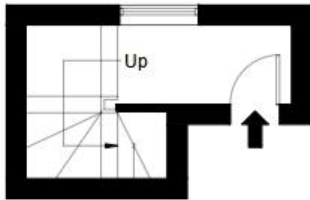






Camden Road, N7 0LG

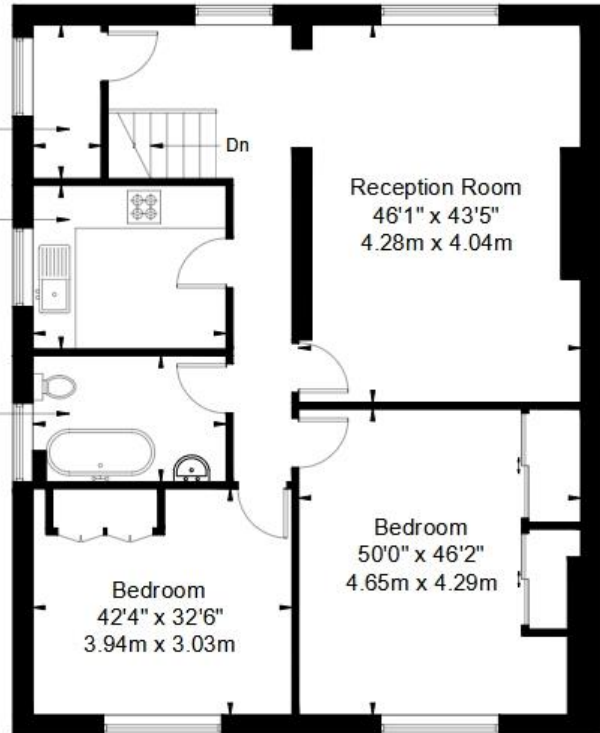
Approx Gross Internal Area = 90 sq m / 969 sq ft



Utility Room
25'2" x 11'3"
2.34m x 1.05m

Kitchen
31'6" x 26'8"
2.94m x 2.49m

Bathroom
31'7" x 20'7"
2.95m x 1.92m



First Floor

Second Floor

Ref :

Copyright **BLEU
PLAN**

The Floor plan is not to scale and measurements and areas shown are approximate and therefore should be used for illustrative purposes only. The plan has been prepared in accordance with the RICS code of Measuring Practice and whilst we have confidence in the information produced it must not be relied on. If there is any aspect of particular importance, you should carry out or commission your own inspection of the property.

Copyright @ BLEUPLAN

Directions

Location



VIEWING BY APPOINTMENT WITH AGENTS ROCHESTER PLACE

161 Kentish Town Road, Camden, London, NW1 8PD T: 020 7284 4747 E: info@rochesterplace.co.uk W: www.rochesterplace.co.uk

General: While we endeavour to make our sales particulars fair, accurate and reliable, they are only a general guide to the property and, accordingly, if there is any point which is of particular importance to you, please contact the office and we will be pleased to check the position for you, especially if you are contemplating travelling some distance to view the property.

Measurements: These approximate room sizes are only intended as general guidance. You must verify the dimensions carefully before ordering carpets or any built-in furniture. Services: Please note we have not tested the services or any of the equipment or appliances in this property, accordingly we strongly advise prospective buyers to commission their own survey or service reports before finalizing their offer to purchase.

THESE PARTICULARS ARE ISSUED IN GOOD FAITH BUT DO NOT CONSTITUTE REPRESENTATIONS OF FACT OR FORM PART OF ANY OFFER OR CONTRACT. THE MATTERS REFERRED TO IN THESE PARTICULARS SHOULD BE INDEPENDENTLY VERIFIED BY PROSPECTIVE BUYERS OR TENANTS. NEITHER ROCHESTER PLACE NOR ANY OF ITS EMPLOYEES OR AGENTS HAS ANY AUTHORITY TO MAKE OR GIVE ANY REPRESENTATION OR WARRANTY WHATSOEVER IN RELATION TO THIS PROPERTY. YOUR HOME IS AT RISK IF YOU DO NOT KEEP UP REPAYMENTS ON A MORTGAGE OR OTHER LOAN SECURED ON IT.

Written quotations available on request. All loans secured on property. Life assurance is usually required.