



7 Kirkby Grove, Grimsby, DN33 1HH
Offers In The Region Of £85,000

 2  1  0  D



7 Kirkby Grove, Grimsby, DN33 1HH

Offers In The Region Of £85,000



Property Overview

Area Information

Kirkby Grove is located in the town of Grimsby, North East Lincolnshire, eastern England, situated on the south side of the River Humber estuary. This area is part of the historic county of Lincolnshire and is approximately 6 miles (10 km) from the North Sea.

Location: Grimsby, North East Lincolnshire, eastern England
Geographical features: Located on the south side of the River Humber estuary
Distance: Approximately 6 miles (10 km) from the North Sea
Historical county: Lincolnshire

Buyers Fee and Reservation

Genie Homes pride ourselves on our simple and secure buying process.

This sale is subject to a 2% plus VAT Buyers Fee and this is based on the agreed sale price. Minimal fee £2,500+VAT

Please contact us to arrange a viewing. We will ask you to provide proof of funds and photographic identification prior to attending, to make sure we cause minimal disruption to any tenants that may reside at the property.

Once you have viewed the property, we will ask you for feedback.

If you make an offer and it is accepted, the full 2% plus VAT is then applicable in order to take the property off the market.

Please note: Should the property purchase not complete, the reservation fee will be refundable in ONLY these circumstances;

1. The vendor has withdrawn from the sale
2. The vendor has not disclosed details regarding the property that affects mortgage-ability. (For example, unforeseen significant structural movement as indicated by a structural survey.)

The benefits of a buyers fee to the buyer are:

- Properties are advertised at a reasonable purchase price in order to encourage a quick sale.
- This approach allows you to secure the property and start the conveyancing process quickly.
- Reservation of the property removes the element of competitive bidding and also the possibility of being gazumped.
- The risk of the sale falling through is minimized on both sides, buyers are committed financially and vendors know that buyers are serious.

All of these elements provide peace of mind from the outset, along with our personal and proactive approach.

We look forward to hearing from you soon.

Disclaimer

Disclaimer - These particulars, whilst believed to be accurate are set out as a general guideline and do not constitute any part of an offer or contract. Intending Purchasers should not rely on them as statements of representation of fact, but must satisfy themselves by inspection or otherwise as to their accuracy. Please note that we have not tested any apparatus, equipment, fixtures, fittings or services including gas central heating

and so cannot verify they are in working order or fit for their purpose. Furthermore, Solicitors should confirm moveable items described in the sales particulars and, in fact, included in the sale since circumstances do change during the marketing or negotiations. Although we try to ensure accuracy, if measurements are used in this listing, they may be approximate. Therefore if intending Purchasers need accurate measurements to order carpeting or to ensure existing furniture will fit, they should take such measurements themselves. Photographs are reproduced general information and it must not be inferred that any item is included for sale with the property.

TENURE

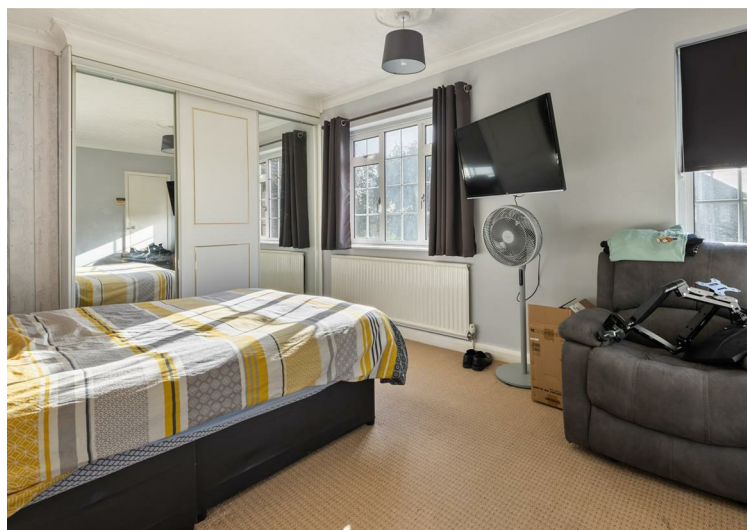
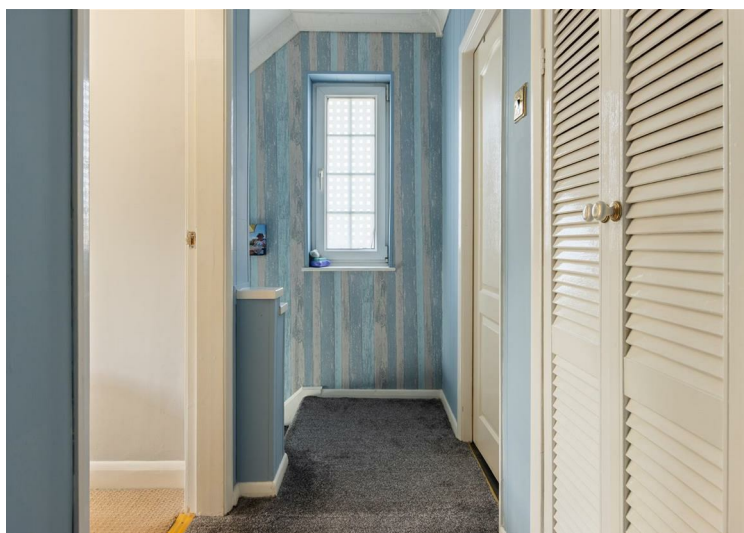
Freehold

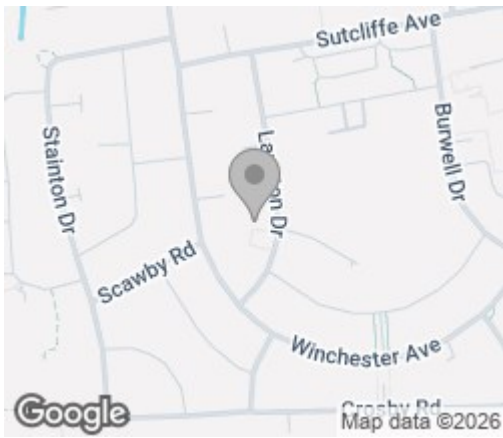
POSSESSION

Tenant occupied

VIEWING

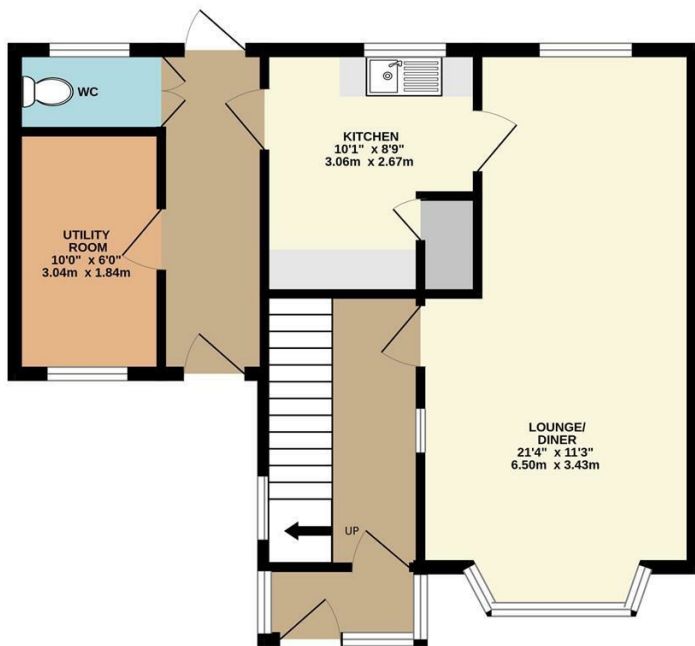
Viewing strictly by appointment through Genie Homes



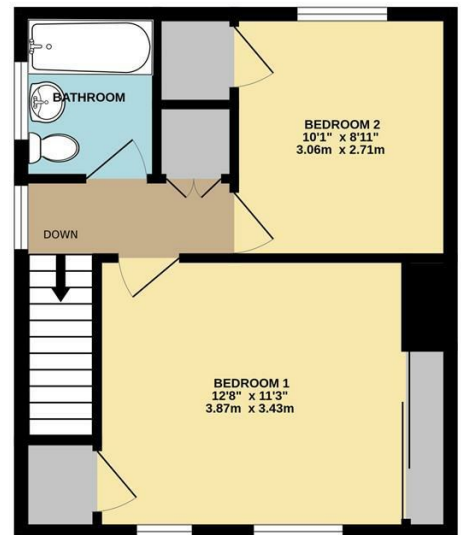


Energy Efficiency Rating		
	Current	Potential
Very energy efficient - lower running costs		
(92 plus) A		
(81-91) B		
(69-80) C		79
(55-68) D	62	
(39-54) E		
(21-38) F		
(1-20) G		
Not energy efficient - higher running costs		
England & Wales		EU Directive 2002/91/EC

GROUND FLOOR
544 sq.ft. (50.5 sq.m.) approx.



1ST FLOOR
371 sq.ft. (34.5 sq.m.) approx.



TOTAL FLOOR AREA : 915 sq.ft. (85.0 sq.m.) approx.

Whilst every attempt has been made to ensure the accuracy of the floorplan contained here, measurements of doors, windows, rooms and any other items are approximate and no responsibility is taken for any error, omission or mis-statement. This plan is for illustrative purposes only and should be used as such by any prospective purchaser. The services, systems and appliances shown have not been tested and no guarantee as to their operability or efficiency can be given.
Made with Metropix ©2025

These particulars, whilst believed to be accurate are set out as a general outline only for guidance and do not constitute any part of an offer or contract. Intending purchasers should not rely on them as statements of representation of fact, but must satisfy themselves by inspection or otherwise as to their accuracy. No person in this firms employment has the authority to make or give any representation or warranty in respect of the property.