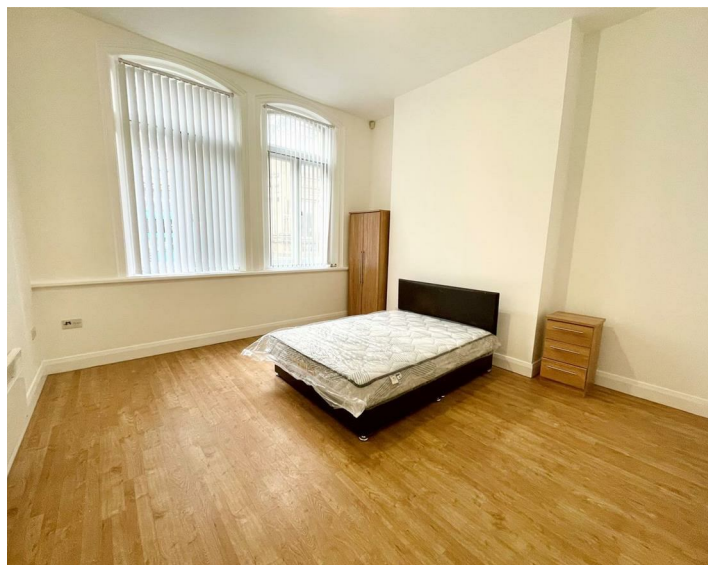




Apt 11 Westminster Chambers, Liverpool, L1 6DQ  
£925 PCM

www.cityresidential.co.uk





About the Property

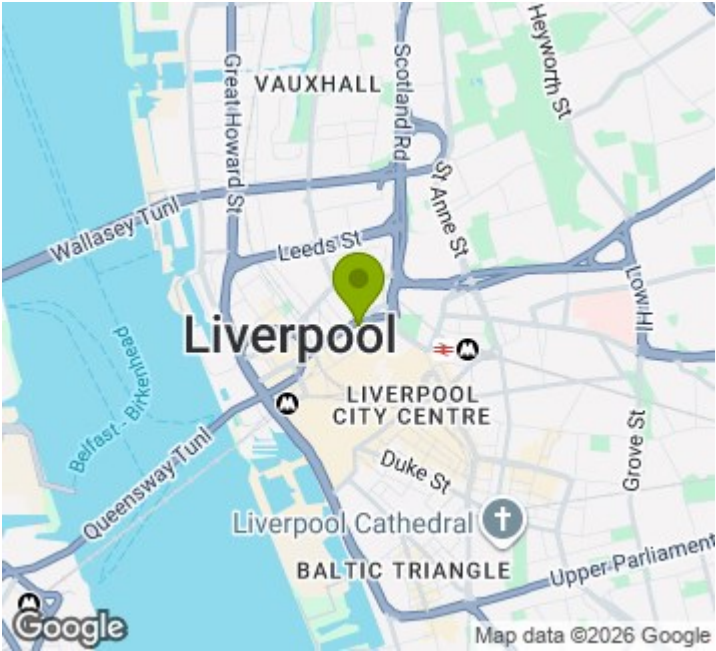
Available now is this well-presented two-bedroom, one-bathroom apartment located on Crosshall Street. This attractive ground floor duplex-style apartment is arranged over two levels, with both bedrooms situated upstairs and the kitchen, living room and bathroom situated downstairs.

The property features a comfortable living area, a fitted kitchen, and a modern bathroom. The upstairs bedrooms are bright and spacious, providing privacy and a quiet retreat from the main living space.

Ideally positioned in the heart of Liverpool city centre, the apartment is within easy walking distance of local amenities, transport links, shops, and restaurants, making it ideal for professionals or sharers seeking convenient city living.

EPC Rating - D. Council Tax Band - C. A deposit amount of £1067 is payable upon moving in. Call us now to arrange a viewing.

- EPC Rating - D
- Council Tax Band - C
- Deposit - £1067
- Two Bedroom, One Bathroom
- Ground Floor
- No Parking



Energy Efficiency Rating

	Current	Potential
Very energy efficient - lower running costs		
(92 plus) <b>A</b>		
(81-91) <b>B</b>		
(69-80) <b>C</b>		
(55-68) <b>D</b>		
(39-54) <b>E</b>		
(21-38) <b>F</b>		
(1-20) <b>G</b>		
Not energy efficient - higher running costs		
	74	84
England & Wales	EU Directive 2002/91/EC 