



Raeburn Avenue, KT5

£675,000

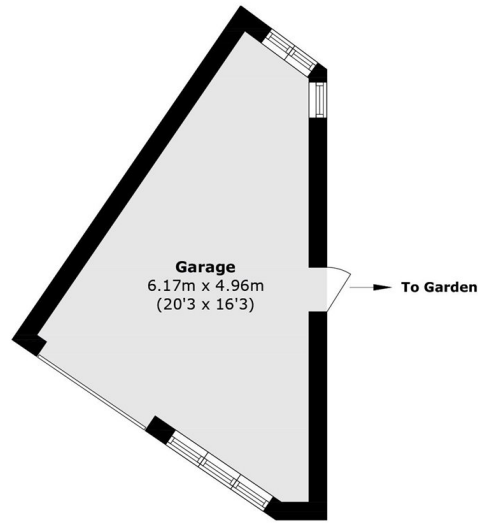
A wonderful, semi detached house situated on a great plot and full of potential. This property has plenty of natural light and good proportions. On the ground floor there are two separate reception rooms and a kitchen, upstairs are three good size bedrooms and a bathroom. To the side there is a garage and off street parking, to the rear is a large private garden. This property could be extended in to the loft, into the garage or to the rear (STPP).

Raeburn Avenue is in the family-friendly area of Berrylands, approximately a mile away from four mainline train stations and in great catchment area for excellent local schools.

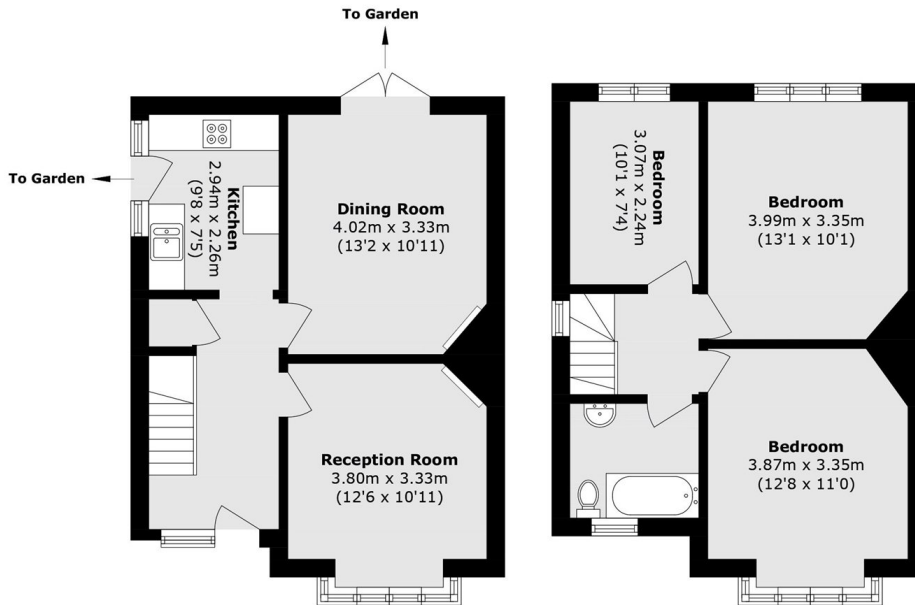
Features

- Semi Detached House
- Potential To Extend (STPP)
- Two Reception Rooms
- Three Bedrooms
- Off Street Parking
- Garage

Raeburn Avenue, Surbiton, KT5



Ground Floor



Ground Floor

First Floor

Total area (approx.): 84.6 sq. m (910.6 sq. ft)
Garage area (approx.): 20.9 sq. m (225.0 sq. ft)