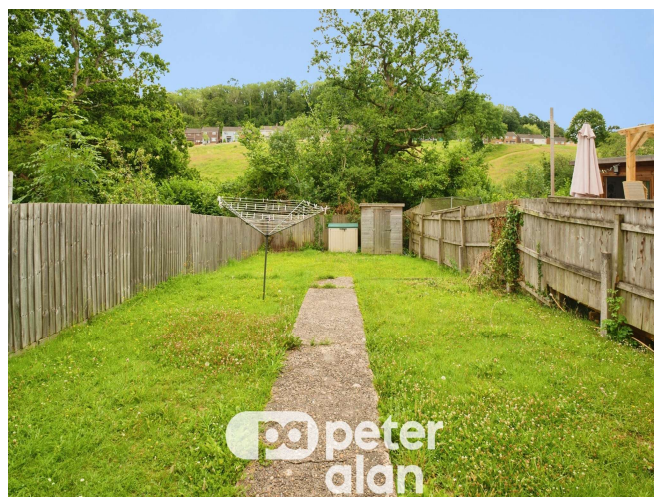




Nelson Drive, £180,000

- No chain!
- Well presented
- Enclosed rear Garden
- 3 Bed Mid Terraced House
- Great Transport links
- Perfect First time buyer or investment opportunity.
- EPC Rating: D



 3  1  1



About the property

A well-presented three-bedroom mid-terraced home situated in a sought-after location, offering excellent transport links and convenient access to local amenities.

The accommodation briefly comprises an entrance hallway leading into a spacious lounge/dining room, providing an ideal space for both everyday living and entertaining. The ground floor also benefits from a fitted kitchen with access to the rear garden.

To the first floor are three well-proportioned bedrooms and a family bathroom.

Externally, the property boasts a lovely enclosed rear garden, perfect for relaxing, outdoor dining, or entertaining family and friends.

An ideal purchase for first-time buyers, families, or investors alike, this attractive home combines comfortable living accommodation with a desirable location and excellent connectivity.

Early viewing is highly recommended.



Accommodation

Entrance Hallway

Lounge/ Dining

Kitchen

Stairs To First Floor

Bedroom One

Bedroom Two

Bedroom Three

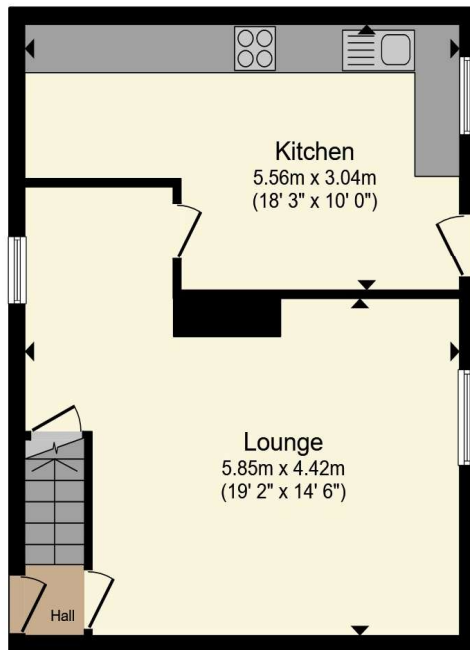
Bathroom

Outside

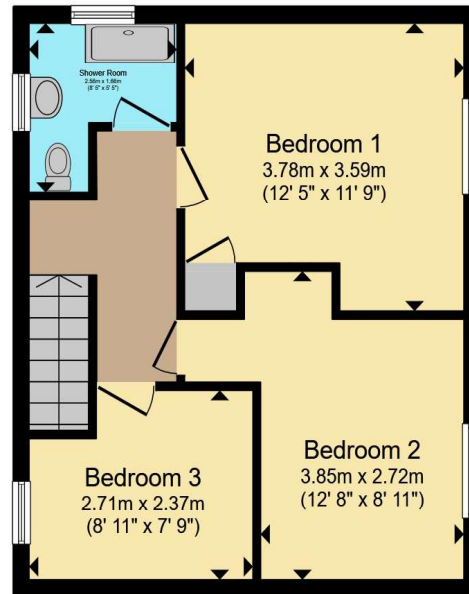
01633 221892

newport@peteralan.co.uk

Floorplan



Ground Floor



First Floor

Total floor area 84.8 m² (913 sq.ft.) approx

This floor plan is for illustrative purposes only. It is not drawn to scale. Any measurements, floor areas (including any total floor area), openings and orientation are approximate. No details are guaranteed, they cannot be relied upon for any purpose and they do not form part of any agreement. No liability is taken for any error, omission or misstatement. A party must rely upon its own inspection(s). Powered by www.propertybox.io



Important Information

Note while we endeavour to make our sales details accurate and reliable, if there is any point which is of particular interest to you, please contact the office and we will be pleased to confirm the position for you. We have not personally tested any apparatus, equipment, fixtures, fittings or services and cannot verify they are in working order or fit for their purposes. Nothing in these particulars is intended to indicate that carpets or curtains, furnishings or fittings, electrical goods (whether wired or not). Gas fires or light fittings or any other fixtures not expressly included form part of the property offered for sale. This computer generated Floorplan, if applicable, is intended as a general guide to the layout and design of the property. It is not to scale and should not be relied upon for dimensions. Tenure: We cannot confirm the tenure of the property as we have not had access to the legal documents. The buyer is advised to obtain verification from their solicitor or surveyor.

Peter Alan Limited is registered in England and Wales under company number 2073153, Registered Office is Cumbria House, 16-20 Hockliffe Street, Leighton Buzzard, Bedfordshire, LU7 1GN. VAT Registration Number is 500 2481 05. For activities relating to regulated mortgages and non-investment insurance contracts, Peter Alan Limited is an appointed representative of Connells Limited which is authorised and regulated by the Financial Conduct Authority. Connells Limited's Financial Services Register number is 302221. Most buy-to-let

