



**Guide Price**  
**£230,000**

**Freehold**

3x  1x  1x 

**Britton Street,  
Gillingham, Kent, ME7**

**OVER 60?**

Secure this property  
for up to **59% less!**

*Wards*  
Helping you move forwards



## Main features

- Spacious Victorian terraced home with separate bedrooms
- Gas central heating and double glazing
- Ideal first time buy or buy-to-let investment
- Walking distance of Gillingham High Street and main line station
- Chain free

## Accommodation

### SPLIT LEVEL GROUND FLOOR

Lounge: 14'2 x 10'8 (4.32m x 3.25m)  
 Dining Area: 12'9 x 11'4 (3.89m x 3.46m)  
 Kitchen: 13'6 at widest point x 9'0 at widest point (4.12m x 2.75m) narrowing to 6'5 x 6'5 (1.96m x 1.96m)

Lobby  
 Bathroom

### BASEMENT

Cellar: 13'7 x 10'7 (4.14m x 3.23m)

### SPLIT LEVEL FIRST FLOOR

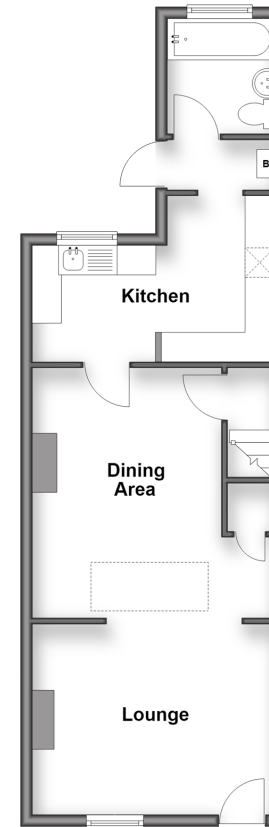
Landing  
 Bedroom 1: 14'3 x 10'8 (4.35m x 3.25m)  
 Bedroom 2: 13'0 x 9'0 (3.97m x 2.75m)  
 Bedroom 3: 9'3 x 6'3 (2.82m x 1.91m)

### OUTSIDE

Front Courtyard  
 Rear Garden

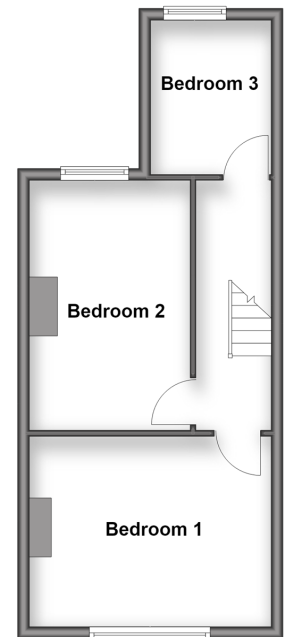
### Split Level Ground Floor

Approx. 46.9 sq. metres (505.1 sq. feet)



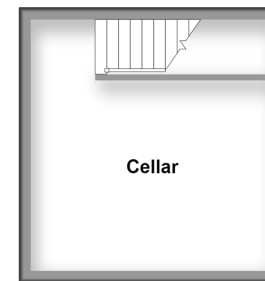
### Split Level First Floor

Approx. 37.0 sq. metres (397.8 sq. feet)



### Basement

Approx. 17.6 sq. metres (189.8 sq. feet)



Call Gillingham - 01634 851191 ■ [wardsofkent.co.uk](http://wardsofkent.co.uk)

- If buying to rent, please check if Local Authority licensing schemes apply before proceeding
- Through a Homewise Home For Life Plan people aged 60+ can secure this property for up to 59% less, by purchasing a Lifetime Lease



10917964/20260618/JS/GS