



**Price**  
**£400,000**

**Freehold**

3x  1x  1x 

**Tintern Road,  
Carshalton, Surrey, SM5**

**cubitt&west**  
Helping you move forwards



## Main features

- Excellent mid-terrace house
- Driveway for 2 cars
- Bright and airy throughout with ample storage
- Moments away from amenities, transport and St. Helier Hospital
- Gorgeously presented rear garden which is perfect for entertaining family and friends

## Accommodation

### GROUND FLOOR

Entrance Hall

Lounge: 15'9 x 11'4 (4.80m x 3.46m)

Kitchen: 9'6 x 9'5 (2.90m x 2.87m)

### FIRST FLOOR

Landing

Bedroom 1: 12'9 x 10'7 (3.89m x 3.23m)

Bedroom 2: 10'6 x 8'4 (3.20m x 2.54m)

Bedroom 3: 7'7 x 7'3 (2.31m x 2.21m)

Bathroom

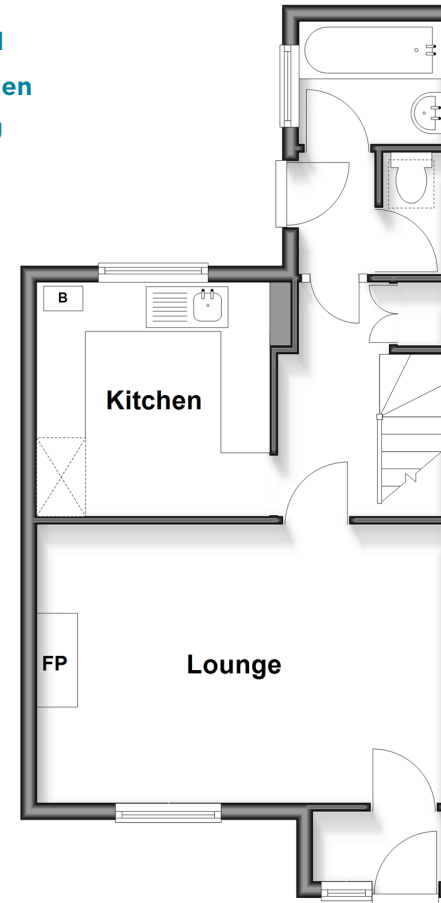
### OUTSIDE

Driveway

Rear Garden

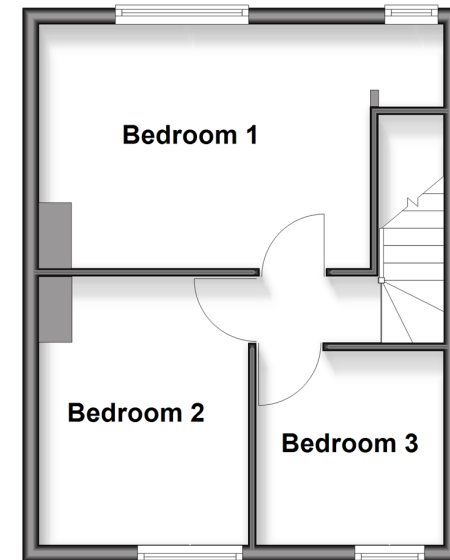
### Ground Floor

Approx. 37.7 sq. metres (405.7 sq. feet)



### First Floor

Approx. 31.4 sq. metres (337.8 sq. feet)



**Call Wallington - 020 8647 0011 ■ [cubittandwest.co.uk](http://cubittandwest.co.uk)**

- Legal advice should be taken to verify fixtures/fittings, planning, alterations and/or lease details
- Appliances & services are untested, dimensions are approximate and floor plans are not to scale



22117983/20250724/GG/MS