



Cork Street, W1S

£4,850 Per week

Located in the heart of Mayfair and situated on the second floor of this new portered building, the apartment offers high specification living, three double bedrooms and three luxury bathrooms.

Burlington Gate is renowned for its discreet luxury and five star amenities, including 24 hour concierge, residents' gym, and secure underground parking (Parking is available here under separate negotiation). Positioned moments from Savile Row, Regent Street and the Royal Academy of Arts, it places you at the heart of Mayfair's culture, shopping and fine dining.

Features

- Three Double Bedrooms
- Three Bathrooms
- Lift Access
- Parking Available (separate negotiation)
- 24 hr Concierge
- Residents' Leisure Facilities



Cork Street, W1S

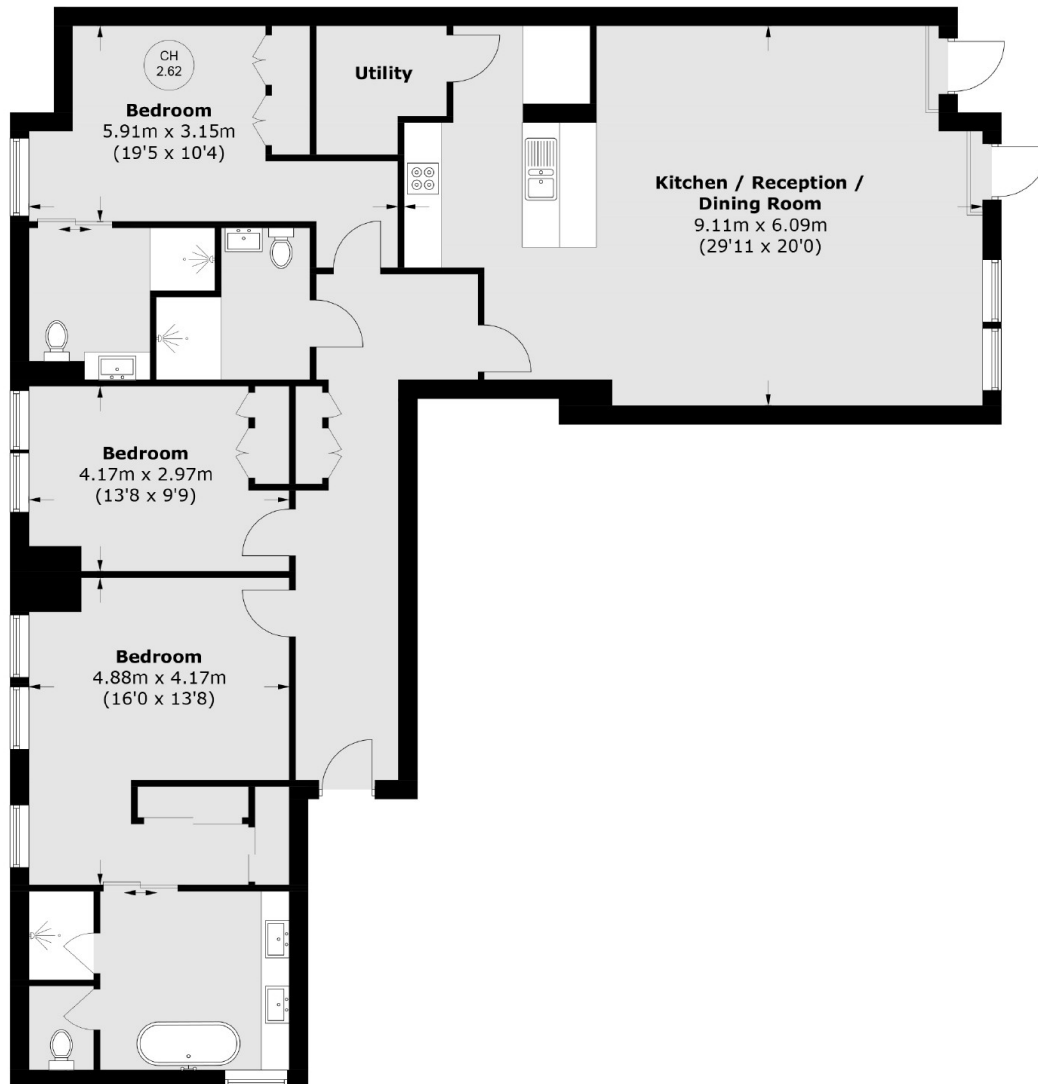
With wooden flooring to the living spaces, this spacious apartment has an open plan kitchen and elegant reception room with dining area and separate utility room.

The property further consists of a main bedroom with en suite bathroom and dressing area, two additional double bedrooms, one with en suite shower room and family bathroom.

The spa and state-of-the-art gymnasium offers a 24-hr, air-conditioned fitness facility along with sauna and treatment room. In addition to the concierge service there is secure underground parking available for all residents.



Cork Street, London, W1S



Total area (approx.): 144.6 sq. m (1,556.2 sq. ft)

Dexters

Wetherell
102 Mount Street
London
W1K 2TH
Lettings
020 7529 5588

Energy Rating: B. We aim to make our particulars both accurate and reliable. However they are not guaranteed; nor do they form part of an offer or contract. If you require clarification on any points then please contact us, especially if you're traveling some distance to view. Please note that appliances and heating systems have not been tested and therefore no warranties can be given as to their good working order.



[dexters.co.uk](https://www.dexters.co.uk)