



Elliot Lodge, 7 Cyrus Field Street, London SE10 0XN



Elliot Lodge, London, SE10 0XN

Leasehold (989 years remaining)

Contemporary 4th floor apartment in the heart of historic Greenwich. Bright, well-proportioned living spaces with modern finishes create an ideal home in this vibrant riverside location, perfectly positioned for London commuting.

Key Features

- 1 Double bedroom, 1 Bathroom
- Private balcony
- Secure underground parking
- Council Tax: **C**
- Service Charge: **£2,500 P/A**
- Ground Rent: **£470 P/A**
- Excellent transport links
- EPC: **B**

This contemporary apartment occupies a prime position within Elliot Lodge, a modern development in the heart of Greenwich's historic quarter. The building offers a sleek architectural presence that complements the area's rich maritime heritage while providing thoroughly modern living accommodation.

The apartment features a bright reception room that flows seamlessly into a contemporary fitted kitchen, creating an efficient yet comfortable living space ideal for modern lifestyles. The well-proportioned bedroom provides a peaceful retreat, while the sleek bathroom suite completes the accommodation with contemporary styling and quality finishes throughout.

Greenwich offers an exceptional blend of historic charm and contemporary convenience, with the property perfectly positioned to enjoy both the area's cultural richness and excellent connectivity. The cobbled streets of Greenwich town centre provide an array of independent shops, traditional pubs, and waterfront dining.



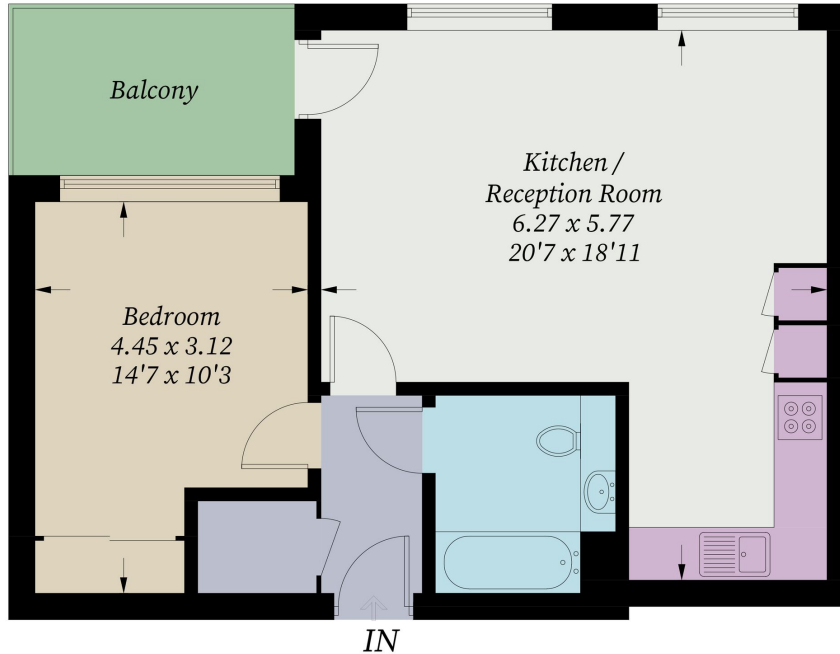






Elliot Lodge, SE10

Approximate Gross Internal Area = 51.1 sq m / 551 sq ft



Fourth Floor

Illustration for identification purposes only, measurements are approximate, not to scale. Fourlabs.co © (ID1307833)