



PORTFOLIO
from


brown & merry

Barley Close, Weston Turville

10 Barley Close, Weston Turville, Buckinghamshire HP22 5SF

A well presented and extended mid terraced family home located on the pedestrianized part of Barley Close making this lovely house an ideal family home.



The Property

10 Barley Close has been well maintained by the current owners and offers light and spacious accommodation over two floors, comprising of a spacious entrance porch which leads into the hallway and cloakroom, a light and airy extended living room with doors to the rear garden, the kitchen / dining room is fitted with an extensive range of wall and base units with complementary work surfaces over, built in appliances, large pantry, window to the front aspect, large storage cupboard.

To the first floor are three good sized bedrooms, two with built in cupboards and a family bathroom fitted with a three piece white suite. There is further storage cupboards on the landing.



Outside

The rear garden enjoys a south westerly aspect and is fully enclosed with paneled fencing, mainly laid to lawn with a timber deck to the rear of the property.

To the front a paved path leads to the front door with lawns to either side and mature flower beds. Parking can be found close by.

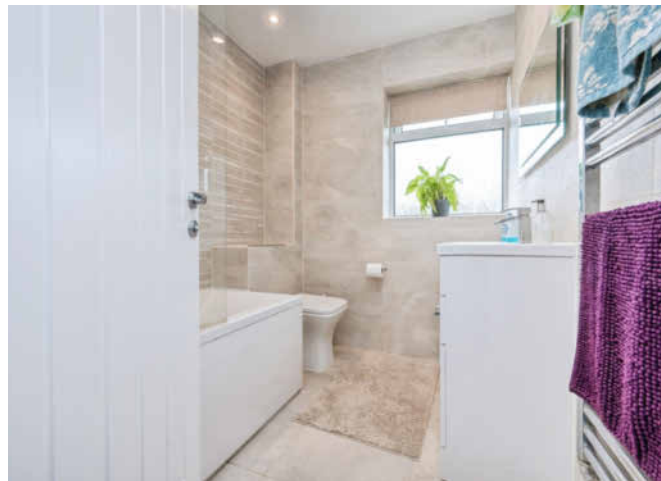


Education

Buckinghamshire has been renowned for its schooling for many years, Weston Turville has a popular primary school, in addition Wendover has a strong selection of schools; Ofsted rated 'outstanding' primary schools, the well regarded John Colet secondary school and the catchment grammar schools, Aylesbury Grammar (boys), Sir Henry Floyd (mixed) and Aylesbury High School (girls). In the independent sector schools include Berkhamsted Collegiate and Tring Park School for the Performing Arts.

Location

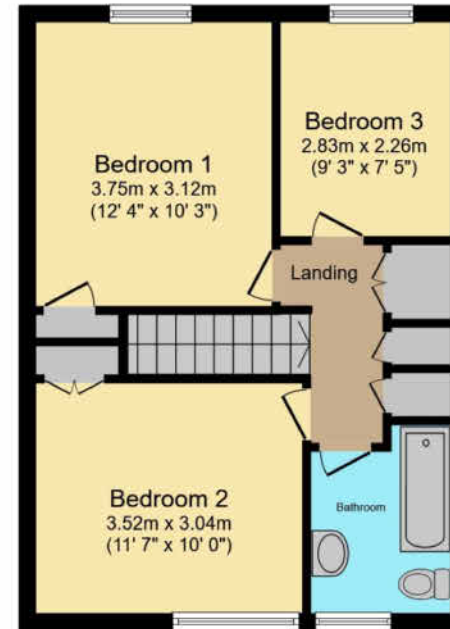
Well located in the heart of Weston Turville village. The village has a village shop, take away and two hair dressers which cater for most day-to-day needs and are all within walking distance. There is also a local primary school, three public houses, a rugby club, popular golf club and reservoir for sailing and angling. There is a choice of railway stations at either Wendover or Stoke Mandeville for London Marylebone or from Tring station to London Euston. The county town of Aylesbury is approximately three miles distant providing a good range of shopping and entertainment facilities, together with grammar schools. The A41 offers a swift connection with the M25 (Junction 20) and M1.





Ground Floor

Floor area 56.7 m² (610 sq.ft.) approx



First Floor

Floor area 42.7 m² (459 sq.ft.) approx

Total floor area 99.3 m² (1,069 sq.ft.) approx

This plan is for illustration purposes only and may not be representative of the property. Plan not to scale.

Powered by Focal

welcome to Barley Close, Weston Turville

A lovely mid terraced family home, with light and spacious accommodation, conveniently located in the heart of Weston Turville village. The village offers wonderful country walks, playing fields with tennis courts and a village Cafe. Whats not to love!

Guide Price

£450,000

- Three Bedrooms
- Extended Living Room
- Kitchen / Diner
- Front and Rear Gardens

EPC Rating: C

Council Tax Band: C

Tenure: Freehold

PORTFOLIO
from


brown & merry



To find out more information or to arrange a viewing call

01296 624444

or email Wendover@brownandmerry.co.uk

Woollerton House, 7 High Street, Wendover, Aylesbury,

Buckinghamshire HP22 6DU

brownandmerry.co.uk

1. MONEY LAUNDERING REGULATIONS Intending purchasers will be asked to produce identification documentation at a later stage and we would ask for your co-operation in order that there is no delay in agreeing the sale. 2. These particulars do not constitute part or all of an offer or contract. 3. The measurements indicated are supplied for guidance only and as such must be considered incorrect. Potential buyers are advised to recheck measurements before committing to any expense. 4. We have not tested any apparatus, equipment, fixtures or services and it is in the buyers interest to check the working condition of any appliances. 5. Where an EPC, or a Home Report (Scotland only) is held for this property, it is available for inspection at the branch by appointment. If you require a printed version of a Home Report, you will need to pay a reasonable production charge reflecting printing and other costs. 6. We are not able to offer an opinion either written or verbal on the content of these reports and this must be obtained from your legal representative. 7. Whilst we take care in preparing these reports, a buyer should ensure that his/her legal representative confirms as soon as possible all matters relating to title including the extent and boundaries of the property and other important matters before exchange of contracts.

Trading name of Sequence (UK) Limited which is registered in England and Wales under company number 4268443, Registered Office is Cumbria House, 16-20 Hockliffe Street, Leighton Buzzard, Bedfordshire, LU7 1GN. VAT Registration Number is 500 2481 05.

