



Guide Price
£310,000

Freehold

3x  1x  1x 

**The Willows,
Newington,
Sittingbourne, Kent,
ME9**

OVER 60?

Secure this property
for up to **59% less!**

Wards
Helping you move forwards



Main features

- An immaculately presented property that you can move straight into
- Spacious 15ft lounge and modern re-fitted kitchen/diner
- Private low maintenance rear garden
- Useful garage en-bloc
- Ideal first purchase
- Popular village location

Accommodation

GROUND FLOOR

Porch

Lounge: 15'0 x 14'2 (4.58m x 4.32m)

Kitchen/Diner: 14'7 x 10'1 (4.45m x 3.08m)

FIRST FLOOR

Landing

Bedroom 1: 13'5 x 8'5 (4.09m x 2.57m)

Bedroom 2: 9'2 x 8'3 (2.80m x 2.52m)

Bedroom 3: 7'4 x 6'0 (2.24m x 1.83m)

Bathroom

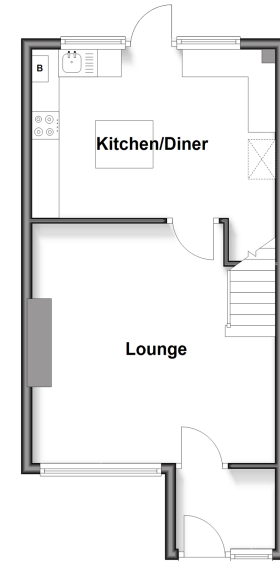
OUTSIDE

Front Garden

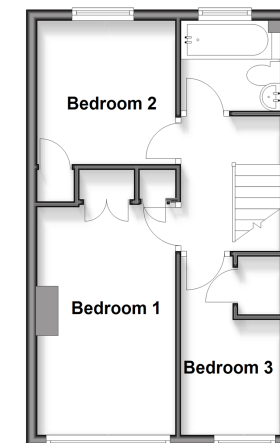
Rear Garden

Garage En-Bloc

Ground Floor
Approx. 36.7 sq. metres (395.6 sq. feet)



First Floor
Approx. 33.9 sq. metres (364.7 sq. feet)



Call Rainham - 01634 373531 ■ wardsofkent.co.uk

- Legal advice should be taken to verify fixtures/fittings, planning, alterations and/or lease details
- Appliances & services are untested, dimensions are approximate and floor plans are not to scale
- Through a Homewise Home For Life Plan people aged 60+ can secure this property for up to 50% less, by purchasing a Lifetime Lease.



11333051/20251125/DW/DW