



Riverford Close

Harpenden, AL5 4LY

Well presented two bedroom, top floor maisonette in a quiet, residential cul-de-sac. Benefiting from a lovely private rear garden backing on to open fields. Riverford Close is a popular location ideally positioned for the station and town centre and close to outstanding schools. ****CHAIN FREE****

Guide price £350,000

Riverford Close

Harpenden, AL5 4LY



- ** CHAIN FREE **
- Circa 694 sq ft
- Quiet residential cul-de-sac
- Top Floor Maisonette
- Private Rear Garden
- Close to station and town centre
- Two Bedrooms
- Close to outstanding schools
- Council Tax Band C

Entrance Hall

Landing

Kitchen

12'3" x 10'0" (3.74m x 3.06m)

Living Room

16'3" x 11'1" (4.96m x 3.39m)

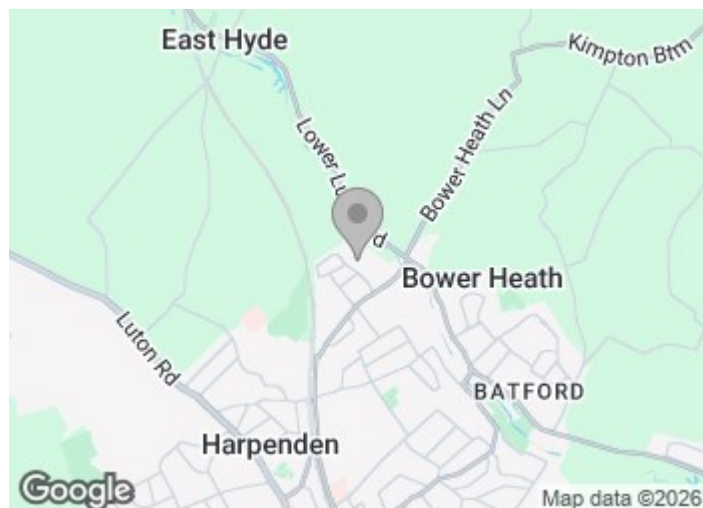
Bedroom One

15'10" x 9'10" (4.83m x 3.00m)

Bedroom Two

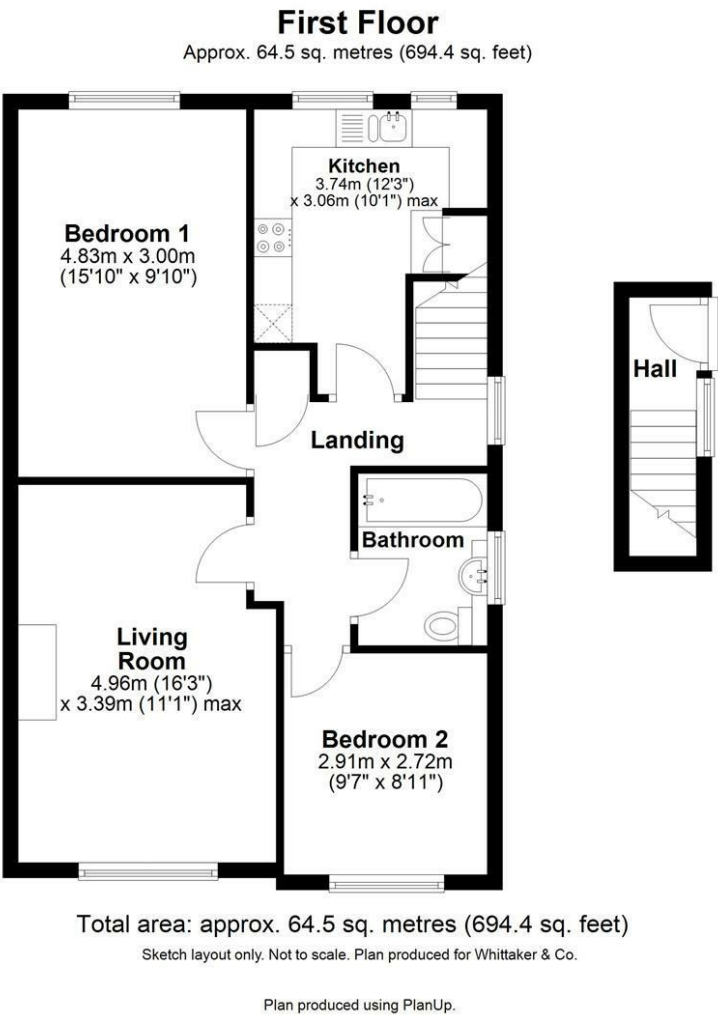
9'6" x 8'11" (2.91m x 2.72m)

Bathroom





Floor Plan



These particulars, whilst believed to be accurate are set out as a general outline only for guidance and do not constitute any part of an offer or contract. Intending purchasers should not rely on them as statements of representation of fact, but must satisfy themselves by inspection or otherwise as to their accuracy. No person in this firms employment has the authority to make or give any representation or warranty in respect of the property.

