

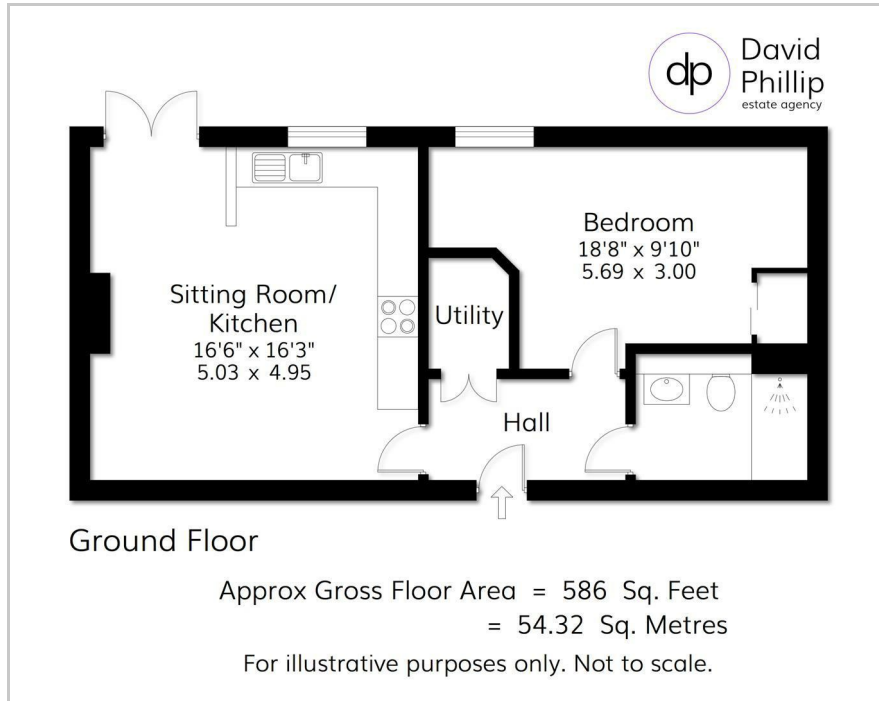


Apartment 7 Adlington House, Otley, LS21 1FQ

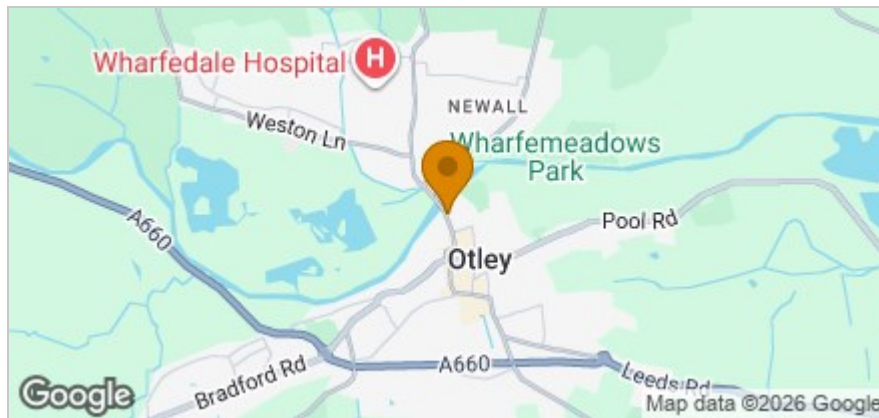
£185,000



## Floor Plan



## Area Map



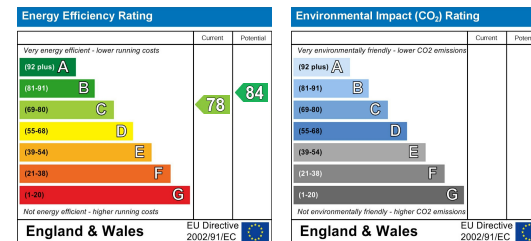
## Accommodation

- A One Bedroom Purpose-Built Ground Floor Apartment
- Designed Specifically for Over 65s with 24 Hour On Site Support
- Open Plan Living Kitchen with French Doors to Private Patio
- Well Maintained Communal Gardens and Parking
- Excellent Modern Near Town Centre Development
- Restaurant, Hairdressers, Mobility Scooter Storage and Charging
- Energy Performance Certificate (EPC) Rating – Commissioned/Pending.
- Leasehold, Leeds City Council Tax Band B

## Viewing

Please contact our David Phillip Estate Agents Office on 01134 676 400 if you wish to arrange a viewing appointment for this property or require further information.

## Energy Efficiency Graph



These particulars, whilst believed to be accurate are set out as a general outline only for guidance and do not constitute any part of an offer or contract. Intending purchasers should not rely on them as statements of representation of fact, but must satisfy themselves by inspection or otherwise as to their accuracy. No person in this firm's employment has the authority to make or give any representation or warranty in respect of the property.