



Tredenham Close, Farnborough

£1,600 Per Month

  
**MARTIN&CO**

Tredenham Close, Farnborough

Flat - Purpose Built

3 Bedrooms, 3 Bathroom

£1,600 Per Month

Date Available: 22nd June 2026

Deposit:

Unfurnished

- Three bedrooms
- Residents' Parking
- Cul-de-sac location
- Recently refurbished
- Available immediately
- Council tax band C
- Security Deposit - £1,846

Martin & Co are delighted to offer to the market this fantastic three bedroom, split level maisonette situated in the desirable town of North camp, Farnborough. Internally the property benefits from large porch, first floor has a modern kitchen, large living/ dining room and a single third bedroom. Second floor comprises of two large double bedrooms and a modern refitted bathroom. Recently updated with new décor, carpet, fixtures and fittings throughout.

Available immediately on and unfurnished basis.  
Minimum household income for references required - £48,000

Holding deposit (one weeks rent) - £369

\*\*This is a guide only and is subject to a full affordability assessment on application, which includes any other credit commitments and credit history.





**Energy Efficiency Rating**

	Current	Potential
Very energy efficient - lower running costs		
(92 plus) <b>A</b>		
(81-91) <b>B</b>		
(69-80) <b>C</b>		
(55-68) <b>D</b>		
(39-54) <b>E</b>		
(21-38) <b>F</b>		
(1-20) <b>G</b>		
Not energy efficient - higher running costs		
	<b>72</b>	

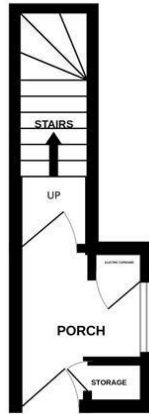
England & Wales EU Directive 2002/91/EC

**Environmental Impact (CO<sub>2</sub>) Rating**

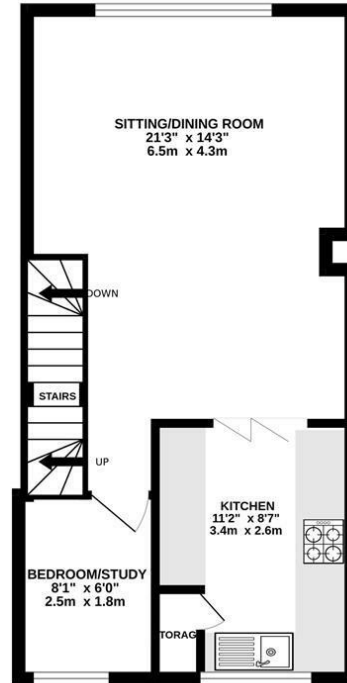
	Current	Potential
Very environmentally friendly - lower CO <sub>2</sub> emissions		
(92 plus) <b>A</b>		
(81-91) <b>B</b>		
(69-80) <b>C</b>		
(55-68) <b>D</b>		
(39-54) <b>E</b>		
(21-38) <b>F</b>		
(1-20) <b>G</b>		
Not environmentally friendly - higher CO <sub>2</sub> emissions		

England & Wales EU Directive 2002/91/EC

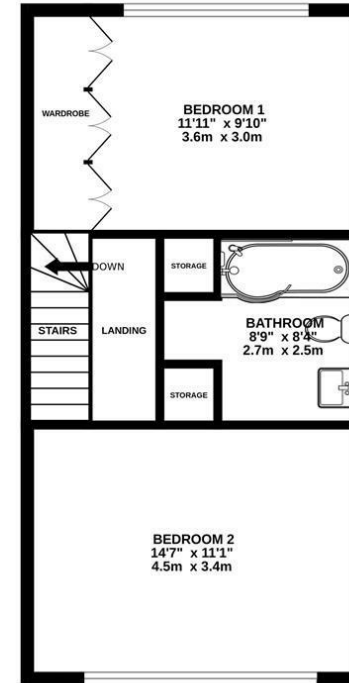
GROUND FLOOR  
75 sq.ft. (7.0 sq.m.) approx.



1ST FLOOR  
418 sq.ft. (38.9 sq.m.) approx.



2ND FLOOR  
428 sq.ft. (39.6 sq.m.) approx.



TOTAL FLOOR AREA : 921 sq.ft. (85.6 sq.m.) approx.

Whilst every attempt has been made to ensure the accuracy of the floorplan contained here, measurements of doors, windows, rooms and any other items are approximate and no responsibility is taken for any error, omission or mis-statement. This plan is for illustrative purposes only and should be used as such by any prospective purchaser. The services, systems and appliances shown have not been tested and no guarantee as to their operability or efficiency can be given.  
Made with Metropix ©2025

Martin & Co Aldershot Lettings  
173 Victoria Road, Aldershot, Hampshire, GU11 1JU  
01252 311974 . aldershot@martinco.com

01252 311974  
<http://www.martinco.com>



**Accuracy:** References to the Tenure of a Property are based on information supplied by the Seller. The Agent has not had sight of the title documents. A Buyer is advised to obtain verification from their Solicitor. Items shown in photographs including but not limited to carpets, fixtures and fittings are not included unless specifically mentioned within the sales particulars. They may however be available by separate negotiation. Buyers must check the availability of any property and make an appointment to view before embarking on any journey to see a property. No person in the employment of the agent has any authority to make any representation about the property, and accordingly any information given is entirely without responsibility on the part of the agents, sellers(s) or lessors(s). Any property particulars are not an offer or contract, nor form part of one. **Sonic / laser Tape:** Measurements taken using a sonic / laser tape measure may be subject to a small margin of error. **All**

**Measurements:** All Measurements are Approximate. **Services Not tested:** The Agent has not tested any apparatus, equipment, Fixtures and Fittings or services and so cannot verify that they are in working order or fit for the purpose. A Buyer is advised to obtain verification from their Solicitor or Surveyor.

