



*jordanfishwick*

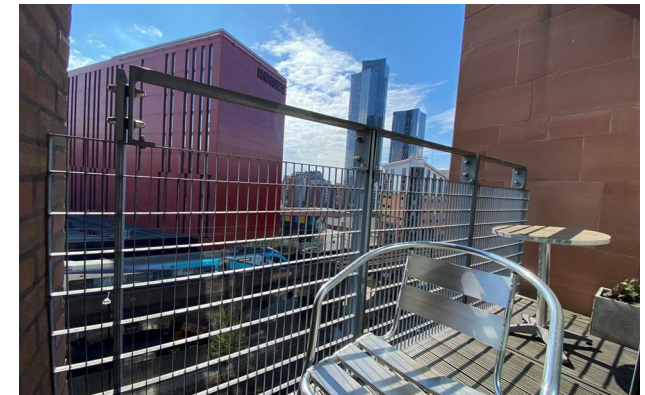
Apt 519 Hacienda, 11 Whitworth Street  
£1,200 Per Calendar Month





# Hacienda Manchester M1 5DD

£1,200 Per Calendar Month



## The Property


Available Mid March. Spacious one bedroom apartment located on the 5th floor in the desirable Hacienda Apartments. The property comprises: Lounge with fully fitted kitchen including appliances and storage cupboard. One large double bedroom and modern bathroom suite with shower attachment over the bath. Balcony. Fully Furnished. Council Tax Band D. EPC Rating C. No Parking included.

**\*VIDEO OFFERS NOT ACCEPTED - PLEASE BOOK AN INPERSON VIEWING\***



- Available Mid March
- One Bedroom
- 5th Floor
- Furnished
- EPC Rating C
- Council Tax Band D
- No Parking
- Close to University



Energy Efficiency Rating		
	Current	Potential
Very energy efficient - lower running costs		
(92 plus) <b>A</b>		<b>85</b>
(81-91) <b>B</b>		
(69-80) <b>C</b>	<b>76</b>	
(55-68) <b>D</b>		
(39-54) <b>E</b>		
(21-38) <b>F</b>		
(1-20) <b>G</b>		
Not energy efficient - higher running costs		
<b>England &amp; Wales</b>		EU Directive 2002/91/EC 





These particulars are believed to be accurate but they are not guaranteed and do not form a contract. Neither Jordan Fishwick nor the vendor or lessor accept any responsibility in respect of these particulars, which are not intended to be statements or representations of fact and any intending purchaser or lessee must satisfy himself by inspection or otherwise as to the correctness of each of the statements contained in these particulars. Any floorplans on this brochure are for illustrative purposes only and are not necessarily to scale.

Offices at: Offices at Chorlton, Didsbury, Disley, Hale, Glossop, Macclesfield, Manchester Deansgate, Manchester Whitworth Street, New Mills, Sale, Wilmslow and Withington