

# Floor Plan

# BRICKS.




ESTATE AGENTS

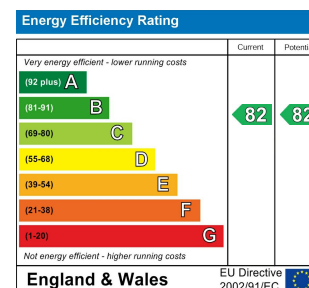


**£2,800 Per month**

These particulars, whilst believed to be accurate are set out as a general outline only for guidance and do not constitute any part of an offer or contract. Intending purchasers should not rely on them as statements of representation of fact, but must satisfy themselves by inspection or otherwise as to their accuracy. No person in this firm's employment has the authority to make or give any representation or warranty in respect of the property.

## Contact Us

-  0203 634 9998
-  [hello@bricksestateagents.co.uk](mailto:hello@bricksestateagents.co.uk)
-  186 Queens Road, Buckhurst Hill, Essex, IG9 5BD



## 280 Grove Green Road, London, E11 4EN

Located on Grove Green Road, this newly built three bedroom end terraced house is a stunning addition to the rental market. Bricks Estate Agents are delighted to present this immaculately finished property, offering a comfortable and stylish living space.

# 280 Grove Green Road, London, E11 4EN



- Available From 23rd of June 2025
- Three Double Bedrooms
- Comfortable And Stylish Living
- Private Garden
- Excellent Transport Links

- Newly Built (End Terraced)
- Three Bathrooms
- Fully Fitted Kitchen
- Immaculately Finished Throughout
- Bike And Bin Storage

## Entrance Hall

## Kitchen

13'11" x 8'11" (4.25 x 2.74)

## Lounge

17'1" x 15'0" (5.23 x 4.59)

## Shower Room One

3'10" x 8'11" (1.18 x 2.74)

## First Floor Landing

## Bedroom Three

10'1" x 15'0" (3.08 x 4.59)

## Shower Room Two

3'9" x 8'6" (1.15 x 2.61)

## Bedroom Two

9'6" x 8'11" (2.91 x 2.72)

## Second Floor Landing

## Main Bedroom

23'1" x 16'9" (7.06 x 5.13)

## Shower Room Three

7'0" x 3'3" (2.15 x 1.00)

## Private Rear Garden

157'1" (47.9)



BRICKS



BRICKS



BRICKS



BRICKS



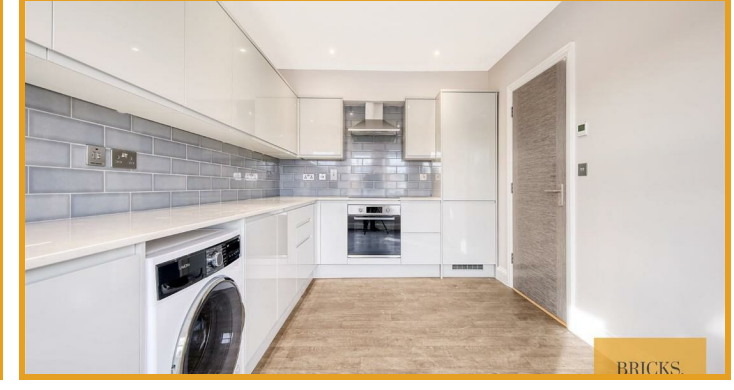
BRICKS



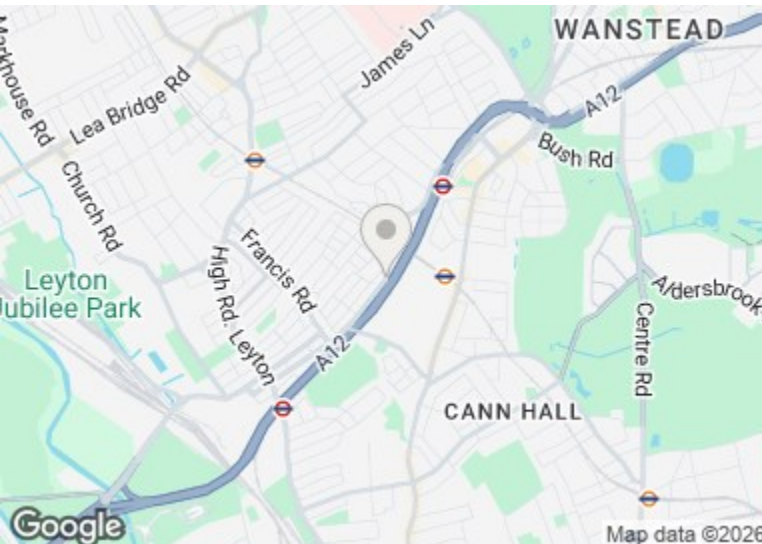
BRICKS



BRICKS



BRICKS



## Directions

# BRICKS.

ESTATE AGENTS