



# Somerville Avenue

Barnes, SW13

£5,000 per month  
(£1,153.85 per week)

A modern second floor apartment boasting natural light throughout, two parking spaces and access to a residents' leisure suite with a swimming pool, sauna and gym.

Accommodation includes a spacious dual-aspect reception room with floor-to-ceiling windows and a generous balcony overlooking manicured communal gardens.

There is a fitted kitchen, three double bedrooms, three well-appointed bathrooms (two of which are en-suite) and plenty of storage space in the hallway.

The apartment is set within gated Harrods Village in north Barnes, which provides 24-hour concierge and proximity to local schools, public transport and the Thames towpath.

**CHESTERTONS**



# Somerville Avenue

## Barnes, SW13

- Modern Second Floor Apartment
- South-Facing Dual-Aspect Reception Room
- Generous Balcony Overlooking Communal Gardens
- Three Double Bedrooms & Three Bathrooms
- Residents' Swimming Pool & Gym



**Deposit Required:** six weeks rent (£6,923.08)  
**Local Authority:** London Borough of Richmond upon Thames  
**Council Tax Band:** G  
**EPC Rating:** B  
**Unfurnished**

Score	Energy rating	Current	Potential
92+	A		
81-91	B	82 B	84 B
69-80	C		
55-68	D		
39-54	E		
21-38	F		
1-20	G		

**Chestertons Barnes Lettings**

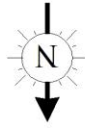
68-69 Barnes High Street  
 Barnes  
 London  
 SW13 9LD  
 lettings.barnes@chestertons.co.uk  
 020 8748 7733  
 chestertons.co.uk

Additional tenant charges apply (fees apply to non-AST tenancies only)  
 Tenancy Agreement Fee: £300  
 References per Tenant/Guarantor: £60  
 Inventory Check: Approx. £100-£250 (inc. VAT)  
[chestertons.co.uk/property-to-rent/applicable-fees](http://chestertons.co.uk/property-to-rent/applicable-fees)

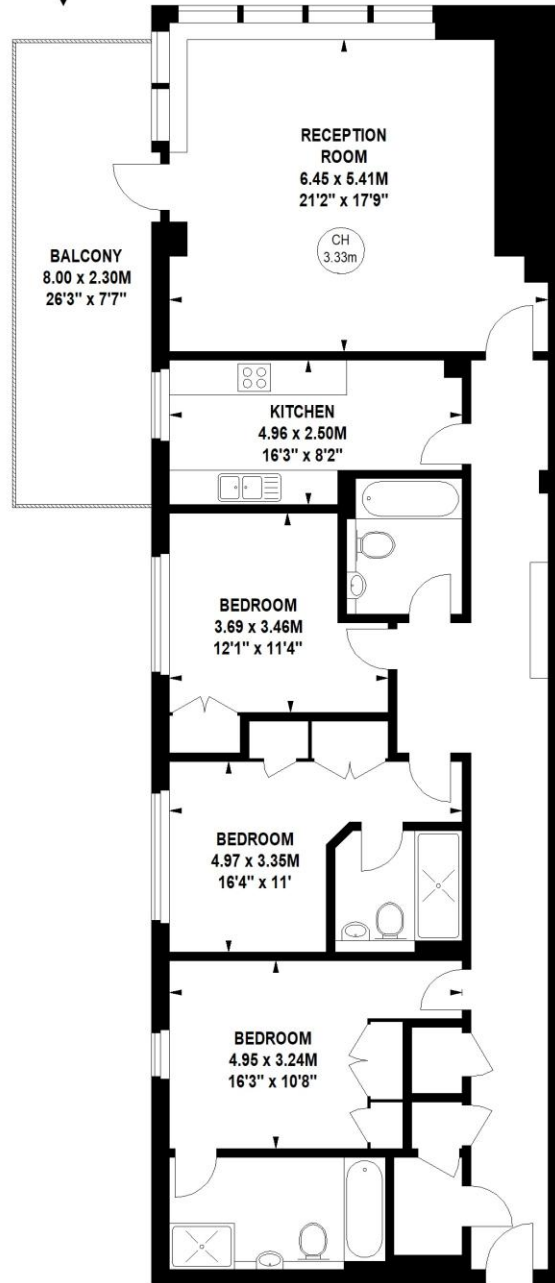
# William Hunt Mansion, SW13

Approximate gross internal area

133 sq m / 1432 sq ft



Key :  
CH - Ceiling Height



## Second Floor

The floor plan is not to scale and measurements and areas shown are approximate and therefore should be used for illustrative purposes only. The plan has been prepared in accordance with the RICS code of Measuring Practice and whilst we have confidence in the information produced, it must not be relied on. If there is any aspect of particular importance, you should carry out or commission your own inspection of the property.  
Copyright of FeaturePRO.

