



Guide Price
£280,000

Freehold

3x  1x  1x 

**Portland Place,
Snodland, Kent, ME6**

OVER 60?

Secure this property
for up to **59% less!**

Wards
Helping you move forwards



Main features

- **Fantastic size home in the heart of Snodland village**
- **Private and low maintenance garden**
- **All bedrooms are doubles and a good size**
- **Ready to move into and add your own stamp as you go**
- **No stress after a long day as you have parking to the rear for 2 cars**

Accommodation

GROUND FLOOR

Lounge: 23'8 x 12'1 (7.22m x 3.69m)

Kitchen: 12'2 x 5'7 (3.71m x 1.70m)

Bathroom: 7'9 x 4'8 (2.36m x 1.42m)

FIRST FLOOR

Landing

Bedroom 1 : 11'3 x 9'3 (3.43m x 2.82m)

Bedroom 2: 11'11 (3.63m) x 8'10 (2.69m)
narrowing to 6'1 (1.86m)

SECOND FLOOR

Landing

Bedroom 3: 10'9 x 10'5 (3.28m x 3.18m)

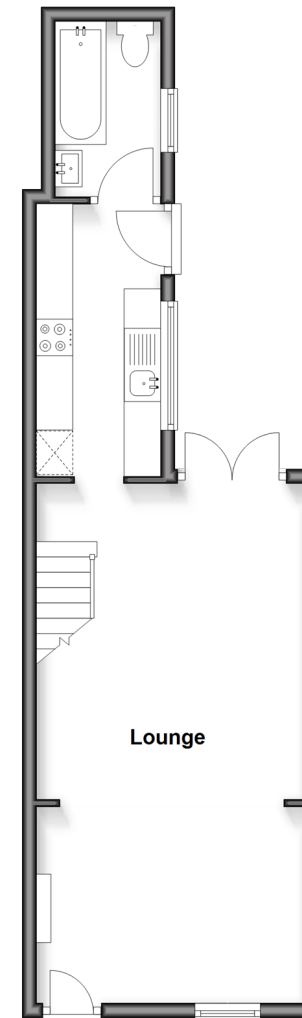
OUTSIDE

Front and Rear Gardens

Parking to the Rear

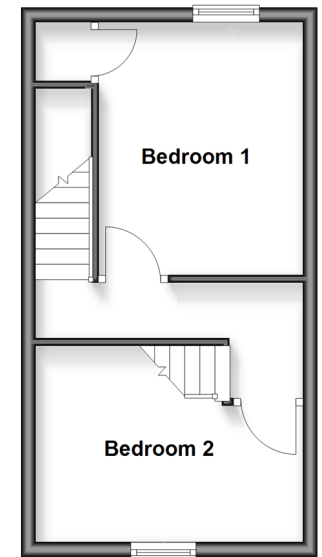
Ground Floor

Approx. 36.4 sq. metres (391.5 sq. feet)



First Floor

Approx. 26.9 sq. metres (290.1 sq. feet)



Second Floor

Approx. 13.3 sq. metres (142.6 sq. feet)



Call Snodland - 01634 245055 ■ wardsofkent.co.uk

■ Through a Homewise Home For Life Plan people aged 60+ can secure this property for up to 59% less, by purchasing a Lifetime Lease



13821924/20260401/MM/LK