






# Tyes Close, Ludford, Market Rasen, Lincolnshire, LN8 6FE

£270,000

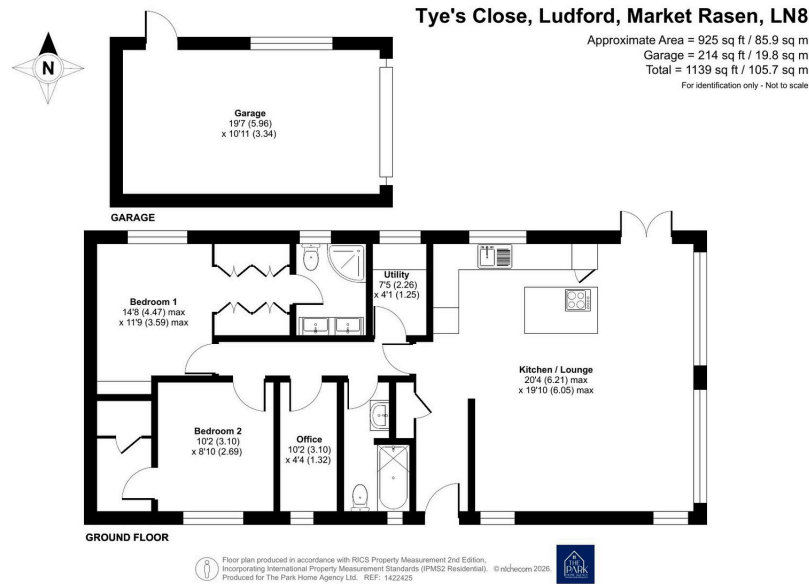
 2  2  2



- Luxurious Park Home Bungalow
- Exclusive Gated Development
- Two Double Bedrooms
- Spacious 46' x 22' design
- Generous garden backing onto fields
- Garage and private driveway
- Bright, spacious living areas
- Useful study / home office
- Stylish modern fitted kitchen
- Ensuite and Guest Bathroom



Situated within the exclusive Tyres Close, a select development of just nine luxurious park home bungalows, this impressive 46' x 22' Prestige Bella Vista offers spacious, high-quality living in a peaceful setting. Beautifully presented throughout, the home features bright and well-proportioned accommodation including a stylish kitchen with utility, generous living space, two comfortable bedrooms, air conditioning fitted and a useful study. Externally, the property enjoys a generous garden backing onto open fields, creating a wonderful sense of privacy and countryside outlook. Further benefits include a spacious garage and private driveway providing ample parking. For those buyers wanting to downsize and appreciate a quality finish, spacious accommodation, a generous garden and countryside views then this is a superb opportunity to acquire this home set prominently within this small and highly desirable development.



01793 230185  
 sales@theparkhomeagency.co.uk

Agents Notes: All measurements are approximate and quoted in metric with imperial equivalents and for general guidance only and whilst every attempt has been made to ensure accuracy, they must not be relied on. The fixtures, fittings and appliances referred to have not been tested and therefore no guarantee can be given that they are in working order. Internal photographs are reproduced for general information and it must not be inferred that any item shown is included with the property. For a free valuation, contact the numbers listed on the brochure