



Warren Street, W1T

£900,000

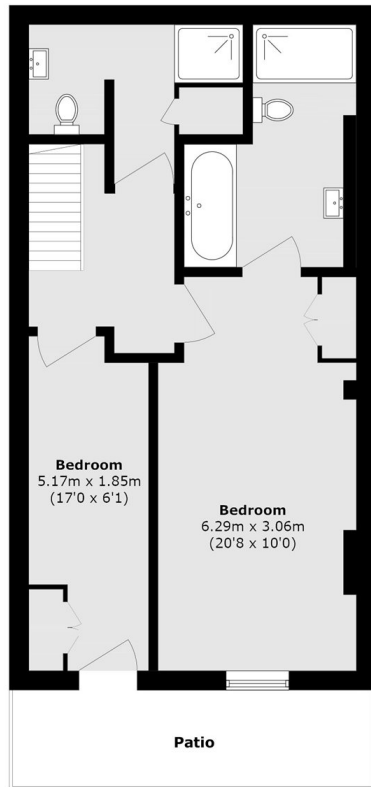
Offered with no onward chain, this bright split-level, two bedroom, two bathroom apartment is set within a charming Georgian period conversion in the heart of Fitzrovia. Featuring high ceilings throughout, the property also benefits from no service charge and approximately 110 years remaining on the lease.

Warren Street is moments from Charlotte Street's renowned cafés and restaurants, with Soho, the West End, and Oxford Street all within easy walking distance. Excellent transport links are available from Warren Street, Goodge Street and Tottenham Court Road stations.

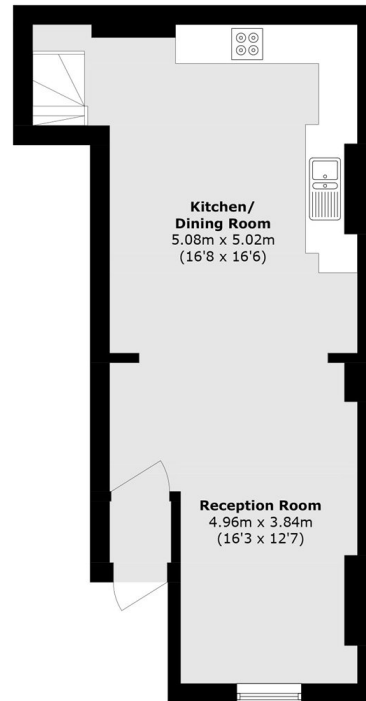
Features

- Two Bedroom
- Two Bathroom
- No Onward Chain
- Period Conversion
- Split-Level
- Fitzrovia

Warren Street, London, W1T



Lower Ground Floor



Ground Floor



Lower Ground Floor

Total area (approx.): 90.1 sq. m 969.8 sq. ft)

Patio area (approx.): 7.1 sq. m (76.4 sq. ft)

Vault area (approx.): 4.1 sq. m (44.1 sq. ft)