



33 Norman Road, Luton, LU3 1JL

Situated on the ever popular Norman Road in Luton, this spacious three bedroom mid terrace home offers fantastic accommodation throughout and would make an ideal family purchase or investment opportunity.

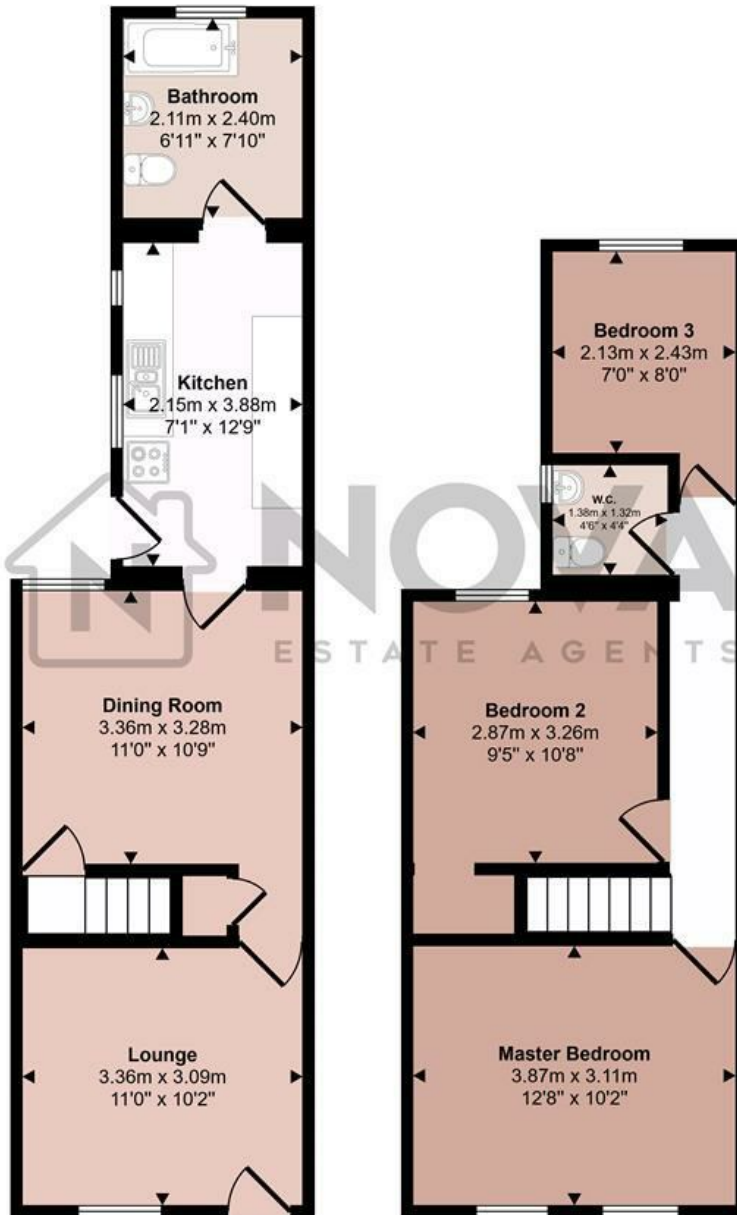
The property benefits from two well proportioned reception rooms, providing flexible living space perfect for both relaxing and entertaining. To the rear, you'll find a practical downstairs bathroom, while upstairs there are three generous sized bedrooms along with the added convenience of a separate WC.

Located in a well regarded area, the property is within easy reach of local shops, schools and places of worship, making it ideally positioned for families. Offering good space throughout and plenty of potential, this is a home that must be viewed to be fully appreciated.

- Nova Estate Agents
- Three Generous Sized Bedrooms
- Two Reception Rooms
- Downstairs Bathroom/ Upstairs WC
- Chain Free
- Press Play Button For 360° Walkaround Tour
- Close to Local Amenities
- Popular Biscot Area

£270,000

Approx Gross Internal Area
76 sq m / 822 sq ft



Ground Floor
Approx 39 sq m / 423 sq ft

First Floor
Approx 37 sq m / 399 sq ft

This floorplan is only for illustrative purposes and is not to scale. Measurements of rooms, doors, windows, and any items are approximate and no responsibility is taken for any error, omission or mis-statement. Icons of items such as bathroom suites are representations only and may not look like the real items. Made with Made Snappy 360.

Energy Efficiency Rating		Current	Potential
Very energy efficient - lower running costs			
(92 plus) A			
(81-91) B			85
(69-80) C			
(55-68) D		60	
(39-54) E			
(21-38) F			
(1-20) G			
Not energy efficient - higher running costs			
England & Wales	EU Directive 2002/91/EC		