



Charles Close, Bourne
£170,000 **Leasehold**

QUENTIN
MARKS



Key Features



125 Years remaining as of 31 Jul 2015

£238.68 Ground Rent pa

Review due: [Ask Agent](#)

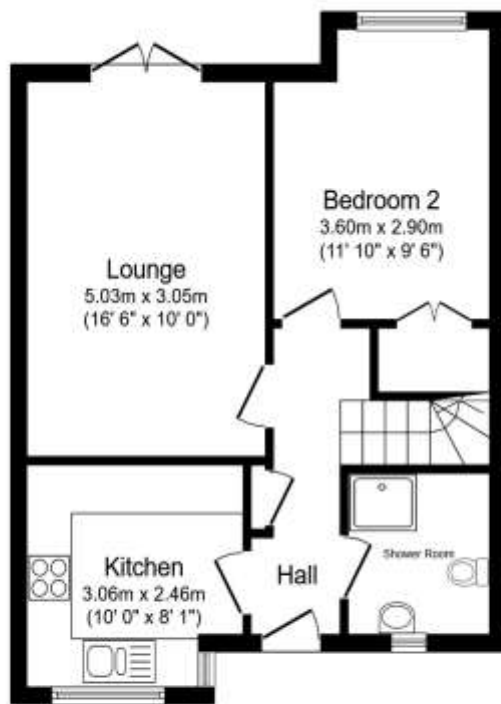
£2440.92 Service Charge pa

Review due: [Ask Agent](#)

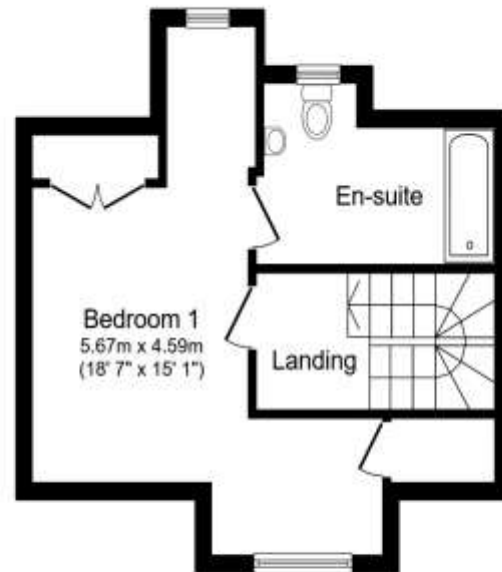
- 2 bed chalet bungalow
- Over 55's only
- Downstairs shower room
- Modern Fitted kitchen
- Large Lounge

This well presented two bedroom mid-terraced chalet bungalow for the over 55's is offered with no upward chain. Charles Close is part of the Croft which is a highly sought after community offering a welcoming and well maintained environment. Residents of the Croft can join in with social gatherings and various activities at the Manor House. There is also a care line alarm service, if required.





Ground Floor



First Floor

This floor plan is for illustrative purposes only. It is not drawn to scale. Any measurements, floor areas (including any total floor area), openings and orientations are approximate. No details are guaranteed; they cannot be relied upon for any purpose and do not form any part of any agreement. No liability is taken for any error, omission or misstatement. A party must rely upon its own inspection(s). Powered by www.PropertyBox.co.uk

There is a modern fitted kitchen with integrated fridge/freezer, eye level oven and ceramic hob, a downstairs shower room with a double width shower, W/C and wash hand basin. There is a good sized lounge with French doors to the communal gardens and a dining room/bedroom two which has a large cupboard. On the first floor there is a large bedroom with fitted wardrobes and a large en-suite. There is also a stair lift at the property and ample storage throughout.


To view this property call Quentin Marks on:
01778 391600

Selling your property?

Contact us to arrange a **FREE** home valuation.

 01778 391600

 2 West Street, Bourne, Lincs, PE10 9NE

 sales@quentinmarks.co.uk

 www.quentinmarks.co.uk



SCAN FOR MORE
INFORMATION



Sharman Quinney Holdings Limited is registered in England and Wales under company number 4174227, Registered Office is Cumbria House, 16-20 Hockliffe Street, Leighton Buzzard, Bedfordshire, LU7 1GN. VAT Registration Number is 500 2481 05.

1: These particulars do not constitute part or all of an offer or contract. 2: The measurements indicated are supplied for guidance only and as such must be considered incorrect. 3: Potential buyers are advised to recheck the measurements before committing to any expense. 4: Sharman Quinney has not tested any apparatus, equipment, fixtures, fittings or services and it is the buyers interests to check the working condition of any appliances. 5: Sharman Quinney has not sought to verify the legal title of the property and buyers must obtain verification from their legal representative. 6: Intending purchasers will be asked to produce identification documentation at a later stage and we would ask your co-operation in order that there will be no delay in agreeing the sale. Ref: SQB100388 - 0010

