



YEWFIELD ROAD, NW10

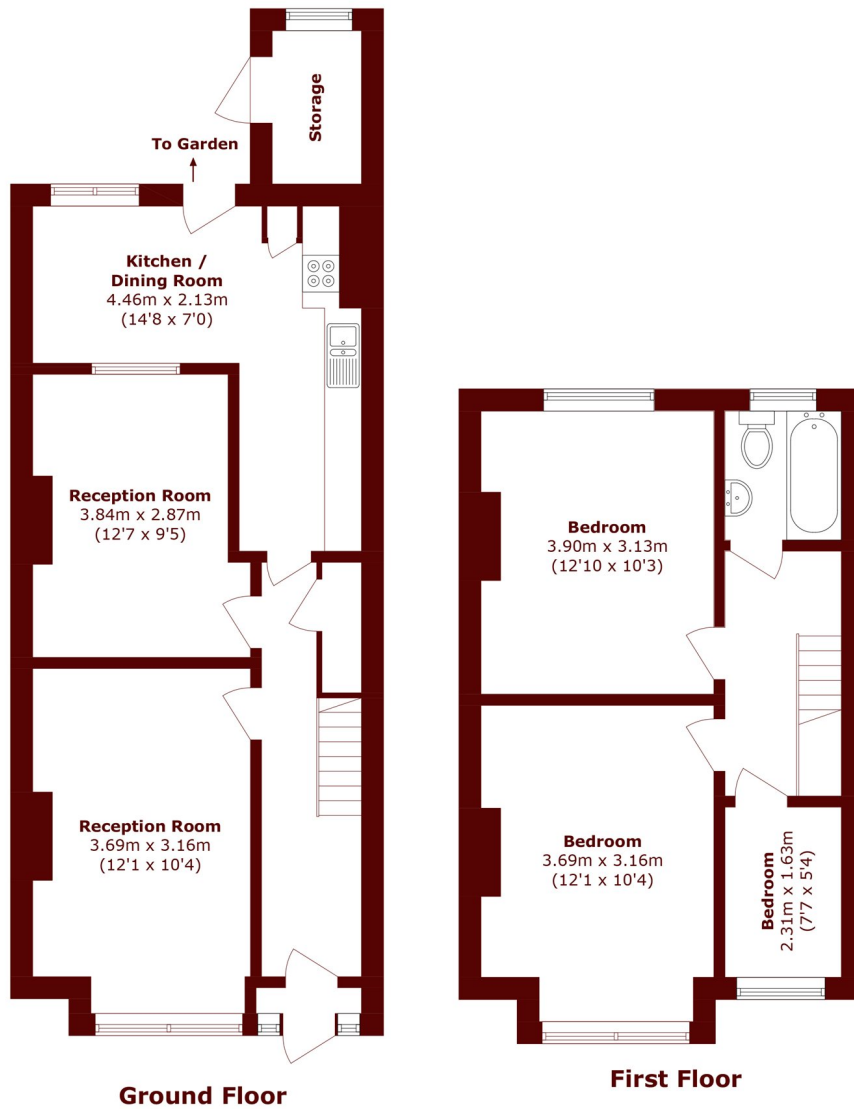
£500,000

We are very excited to be able to offer for sale this beautifully presented refurbished Victorian built centre terrace house offering ready to move into family accommodation comprising of three bedrooms, garden and

Single Rear Extension
Recently Renovated
Garden

Freehold
Potential To Extend STP
Two Reception Rooms

STEP INSIDE YEWFIELD ROAD



Total area (approx.): 87.2 sq. m (938.6 sq. ft)
External Storage area (approx.): 2.5 sq. m (27.0 sq. ft)

Willesden Green
020 8451 0420

Energy Rating: D We aim to make our particulars both accurate and reliable. However, they are not guaranteed; nor do they form part of an offer or contract. If you require clarification on any points then please contact us, especially if you're traveling some distance to view. Please note that appliances and heating systems have not been tested and therefore no warranties can be given as to their good working order

**MARSH &
PARSONS**