

Beesons House

Development overview

Ground Floor



First Floor



Second Floor



Third Floor



- | | | |
|----------------------|---------------------------------|-------------------------|
| ● 1 bedroom property | E - Entrance Lobby | P - Plant Room |
| ● 2 bedroom property | GS - Guest Suite | PS - Potting Shed |
| ○ Communal Areas | L - Lift | R - Reception |
| ○ Staff Areas | MSC - Mobility Scooter Charging | RR - Refuse & Recycling |
| | O - Office | S - Store |



Beesons House

Apartment 1

71.4 SQM

768 SQFT



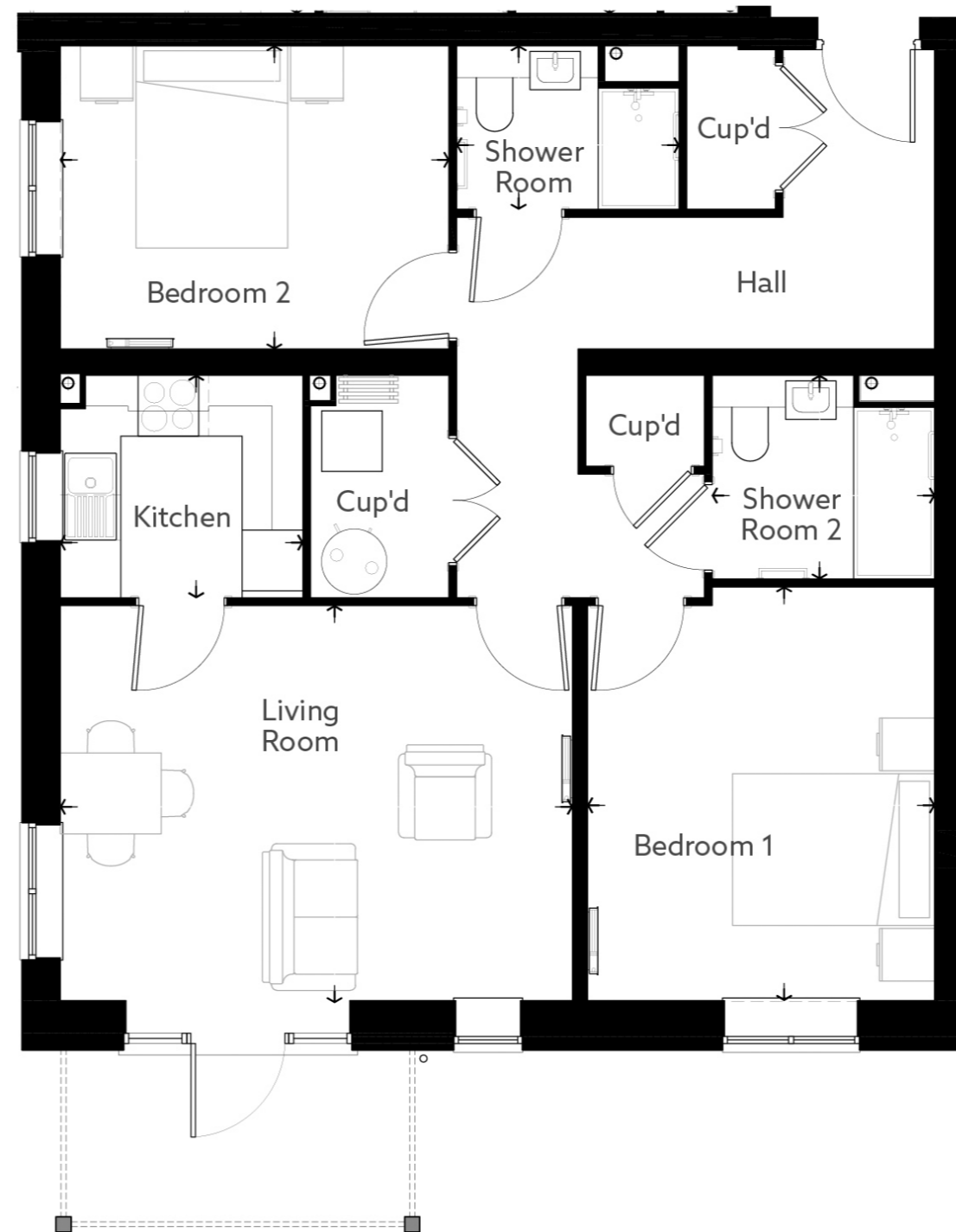
Living (Max)	10' 7" x 14' 7"	3225mm x 4443mm
Kitchen (Max)	8' 0" x 10' 9"	2451mm x 3275mm
En-Suite (Max)	7' 3" x 5' 1"	2200mm x 1550mm
Shower Room (Max)	6' 9" x 7' 3"	2050mm x 2200mm
Bedroom 1 (Max)	9' 4" x 17' 10"	2850mm x 5441mm
Bedroom 2 (Max)	9' 0" x 14' 1"	2750mm x 4288mm

Beesons House

Apartment 2

81.6 SQM

878 SQFT



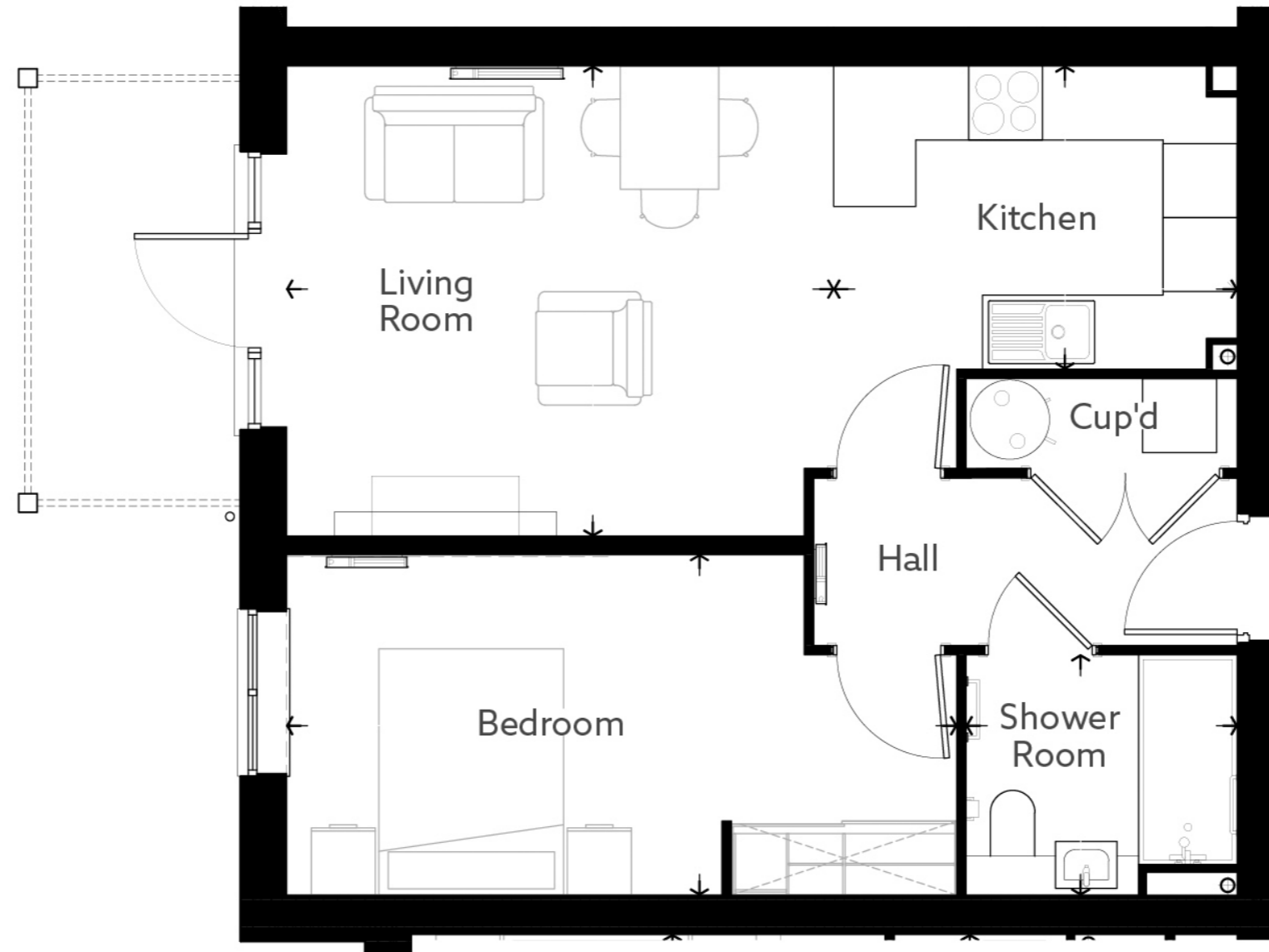
Living (Max)	16' 8" x 12' 11"	5067mm x 3929mm
Kitchen (Max)	7' 10" x 7' 3"	2400mm x 2200mm
Shower Room 1 (Max)	7' 3" x 5' 4"	2200mm x 1618mm
Shower Room 2 (Max)	7' 3" x 6' 7"	2200mm x 2015mm
Bedroom 1 (Max)	11' 3" x 13' 5"	3433mm x 4091mm
Bedroom 2 (Max)	12' 7" x 9' 10"	3845mm x 3000mm

Beesons House

Apartment 3

51.9 SQM

599.1 SQFT



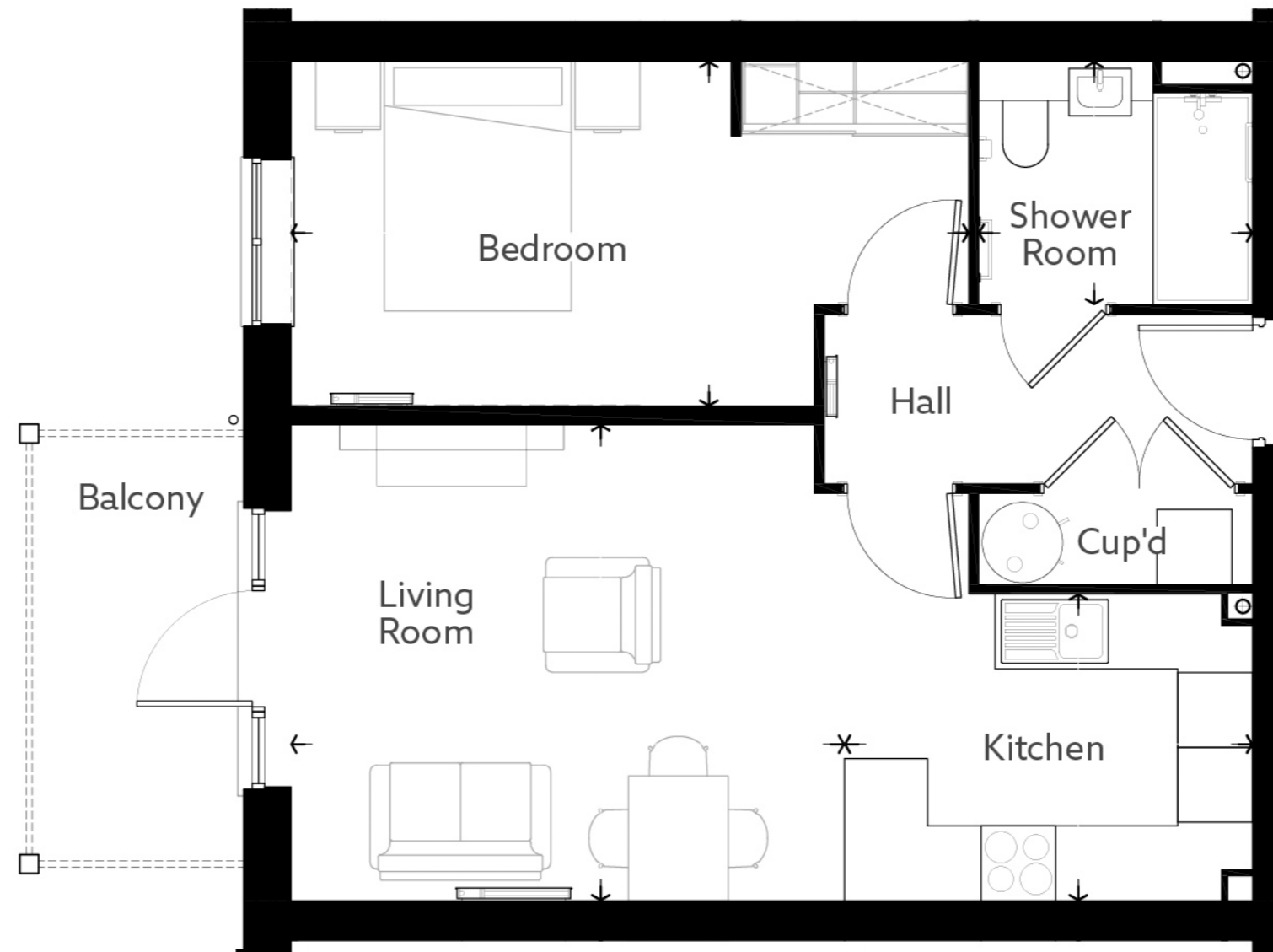
Living (Max)	14' 7" x 12' 6"	4443mm x 3816mm
Kitchen (Max)	10' 9" x 8' 1"	3275mm x 2460mm
Shower Room (Max)	7' 3" x 6' 5"	2200mm x 1950mm
Bedroom (Max)	17' 10" x 9' 1"	5441mm x 2764mm

Beesons House

Apartment 4

51.9 SQM

599.1 SQFT



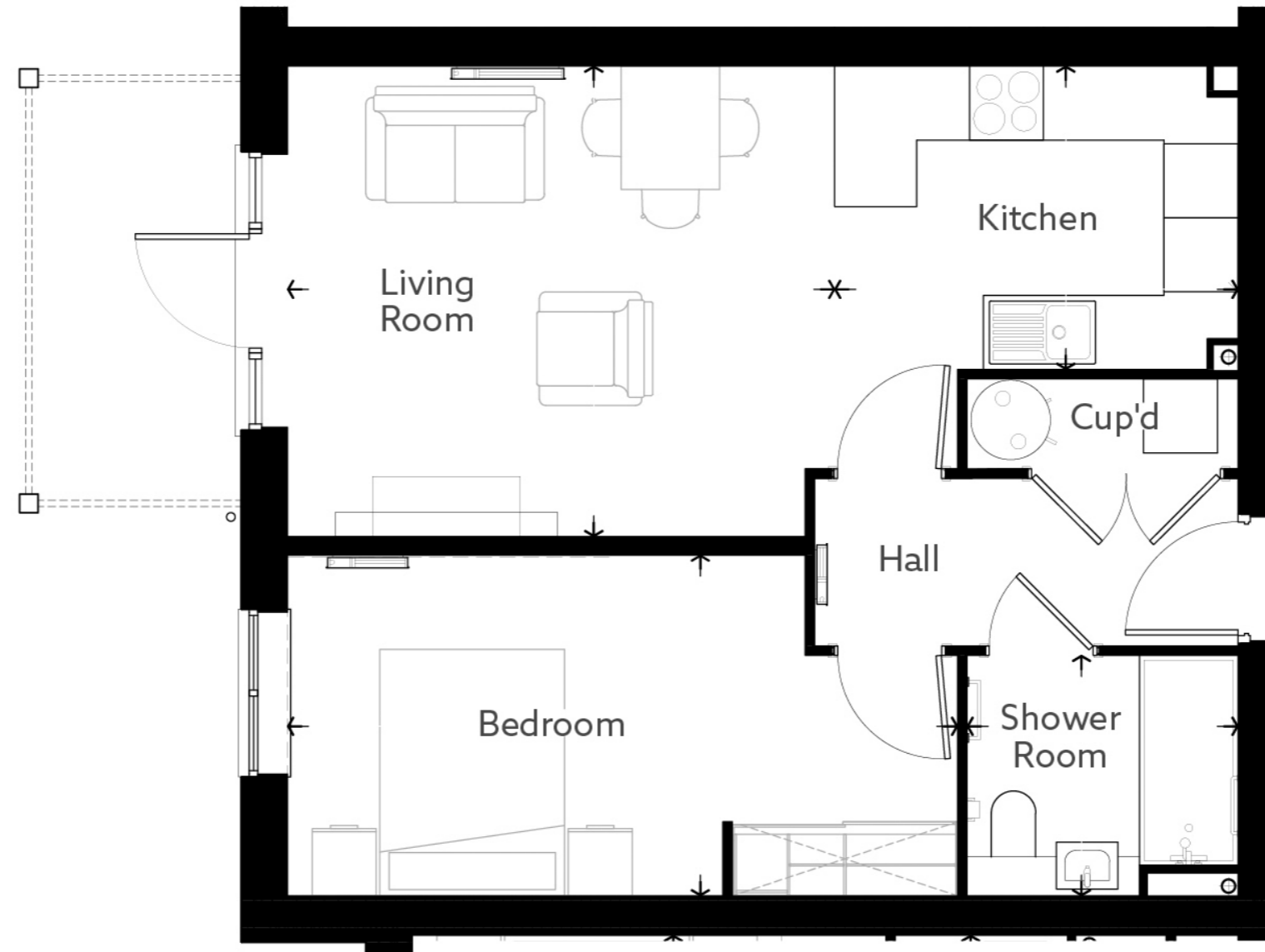
Living (Max)	14' 7" x 12' 6"	4443mm x 3816mm
Kitchen (Max)	10' 9" x 8' 1"	3275mm x 2460mm
Shower Room (Max)	7' 3" x 6' 5"	2200mm x 1950mm
Bedroom (Max)	17' 10" x 9' 1"	5441mm x 2764mm

Beesons House

Apartment 5

51.9 SQM

599.1 SQFT



Living (Max)	14' 7" x 12' 6"	4443mm x 3816mm
Kitchen (Max)	10' 9" x 8' 1"	3275mm x 2460mm
Shower Room (Max)	7' 3" x 6' 5"	2200mm x 1950mm
Bedroom (Max)	17' 10" x 9' 1"	5441mm x 2764mm

Beesons House

Apartment 6

71.4 SQM

768 SQFT



Living (Max)	10' 7" x 17' 10"	3225mm x 5441mm
Kitchen (Max)	7' 10" x 7' 3"	2400mm x 2200mm
Shower Room (Max)	7' 3" x 5' 1"	2200mm x 1550mm
Bedroom 1 (Max)	9' 4" x 17' 10"	2850mm x 5441mm
En-Suite (Max)	6' 9" x 7' 3"	2050mm x 2200mm
Bedroom 2 (Max)	9' 0" x 14' 1"	2738mm x 4288mm

Beesons House

Apartment 7

79.4 SQM

854.2 SQFT



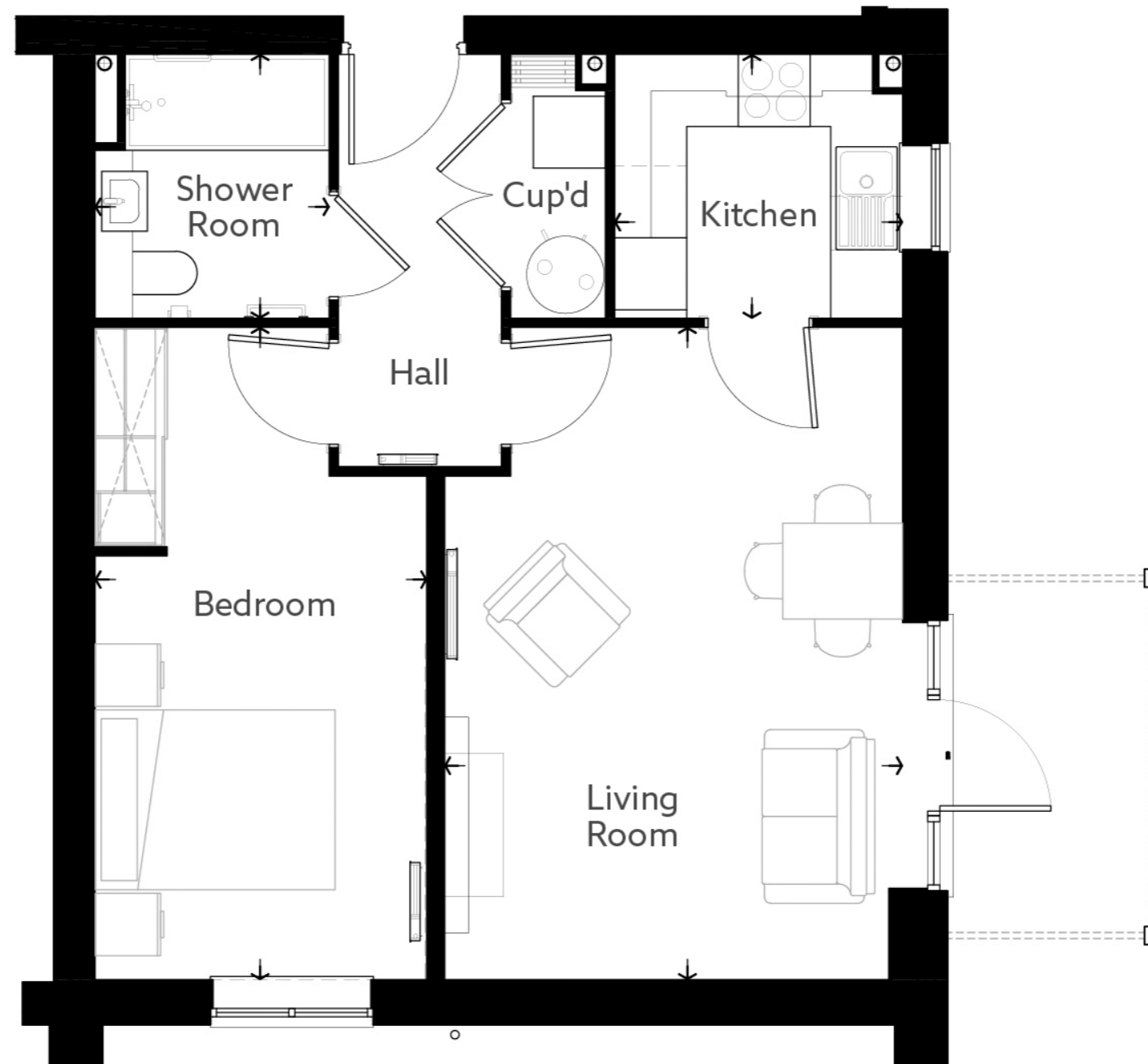
Living (Max)	11' 7" x 19' 11"	3542mm x 6075mm
Kitchen (Max)	8' 1" x 10' 8"	2465mm x 3247mm
Shower Room (Max)	5' 4" x 7' 3"	1618mm x 2200mm
Bedroom 1 (Max)	9' 10" x 13' 1"	2988mm x 3986mm
En-Suite (Max)	6' 9" x 7' 3"	2050mm x 2200mm
Bedroom 2 (Max)	7' 3" x 6' 9"	2200mm x 2050mm

Beesons House

Apartment 8

51.9 SQM

559.1 SQFT



Living (Max)	17' 10" x 9' 1"	5441mm x 3816mm
Kitchen (Max)	7' 3" x 7' 10"	2200mm x 2400mm
Shower Room (Max)	7' 3" x 6' 5"	2200mm x 1950mm
Bedroom (Max)	17' 10" x 9' 1"	5441mm x 2764mm

Beesons House

Apartment 9

79.4 SQM

854.2 SQFT



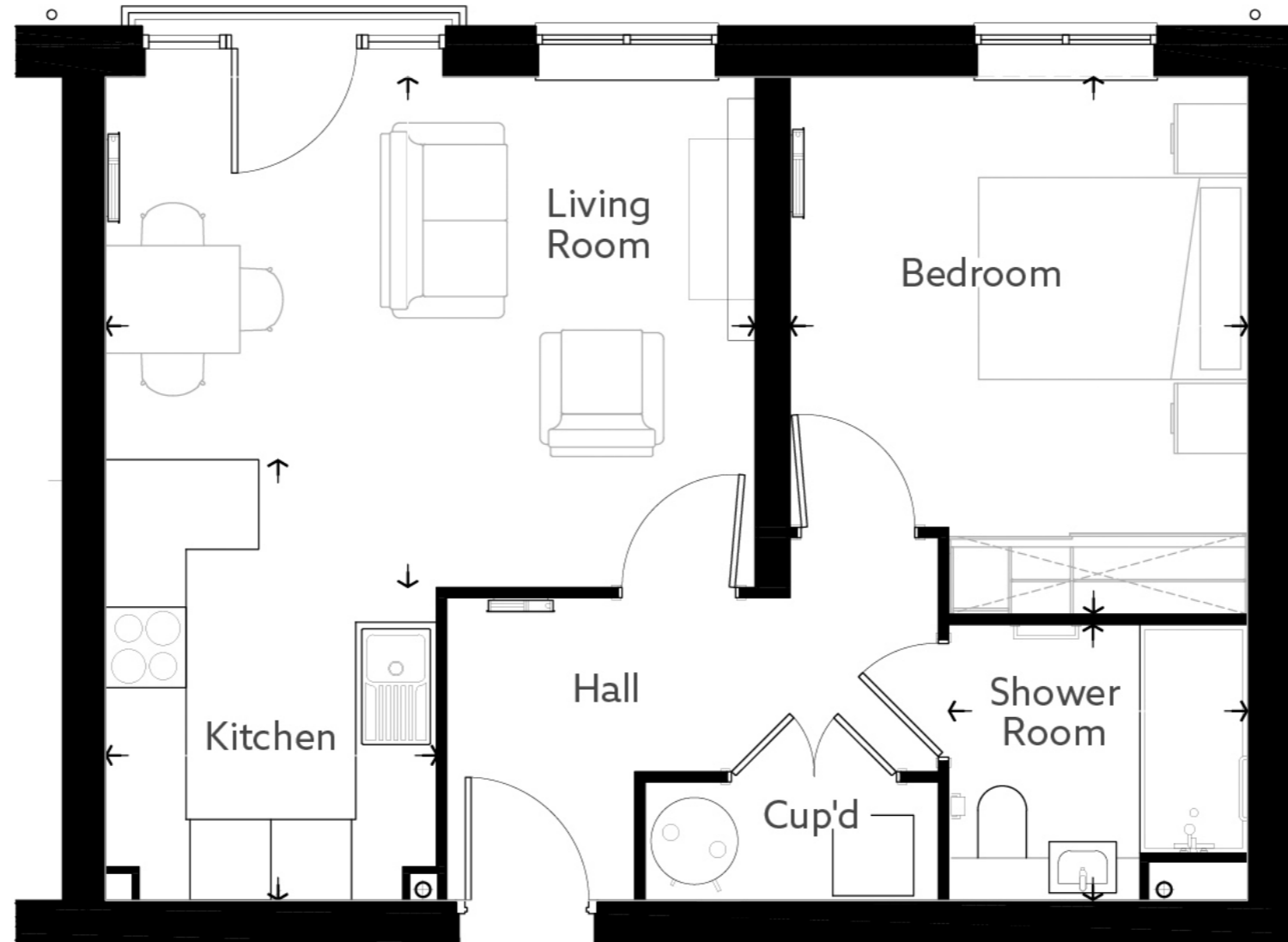
Living (Max)	11' 7" x 19' 11"	3542mm x 6075mm
Kitchen (Max)	8' 1" x 10' 8"	2465mm x 3247mm
Shower Room (Max)	5' 4" x 7' 3"	1618mm x 2200mm
Bedroom 1 (Max)	9' 10" x 13' 1"	2988mm x 3986mm
En-Suite (Max)	6' 9" x 7' 3"	2050mm x 2200mm
Bedroom 2 (Max)	7' 3" x 6' 9"	2200mm x 2050mm

Beesons House

Apartment 10

52 SQM

559.5 SQFT



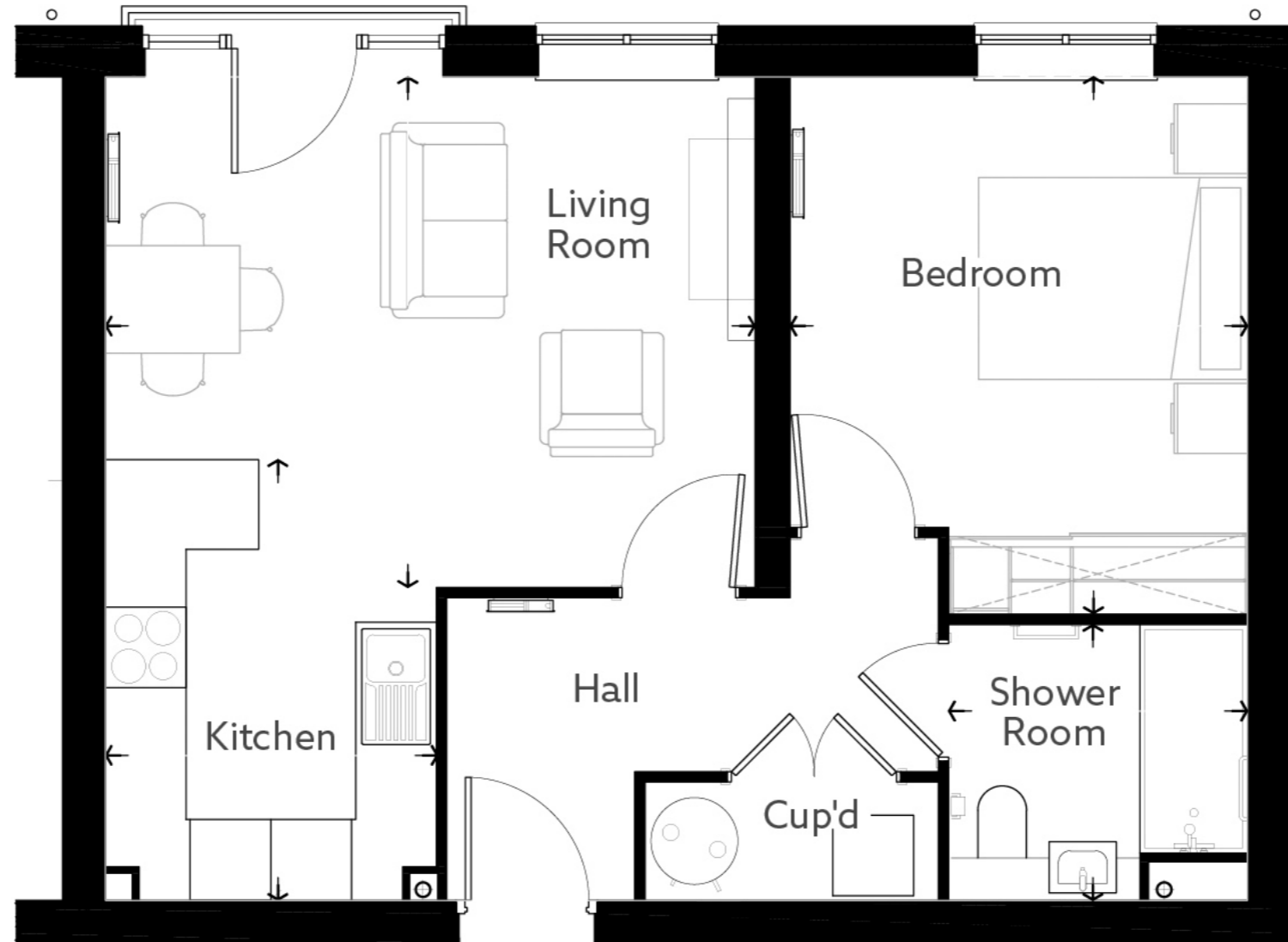
Living (Max)	15' 10" x 12' 5"	4830mm x 3795mm
Kitchen (Max)	8' 1" x 10' 9"	2473mm x 3275mm
Shower Room (Max)	7' 3" x 6' 9"	2221mm x 2050mm
Bedroom (Max)	11' 2" x 13' 1"	3400mm x 3991mm

Beesons House

Apartment 11

52 SQM

559.5 SQFT



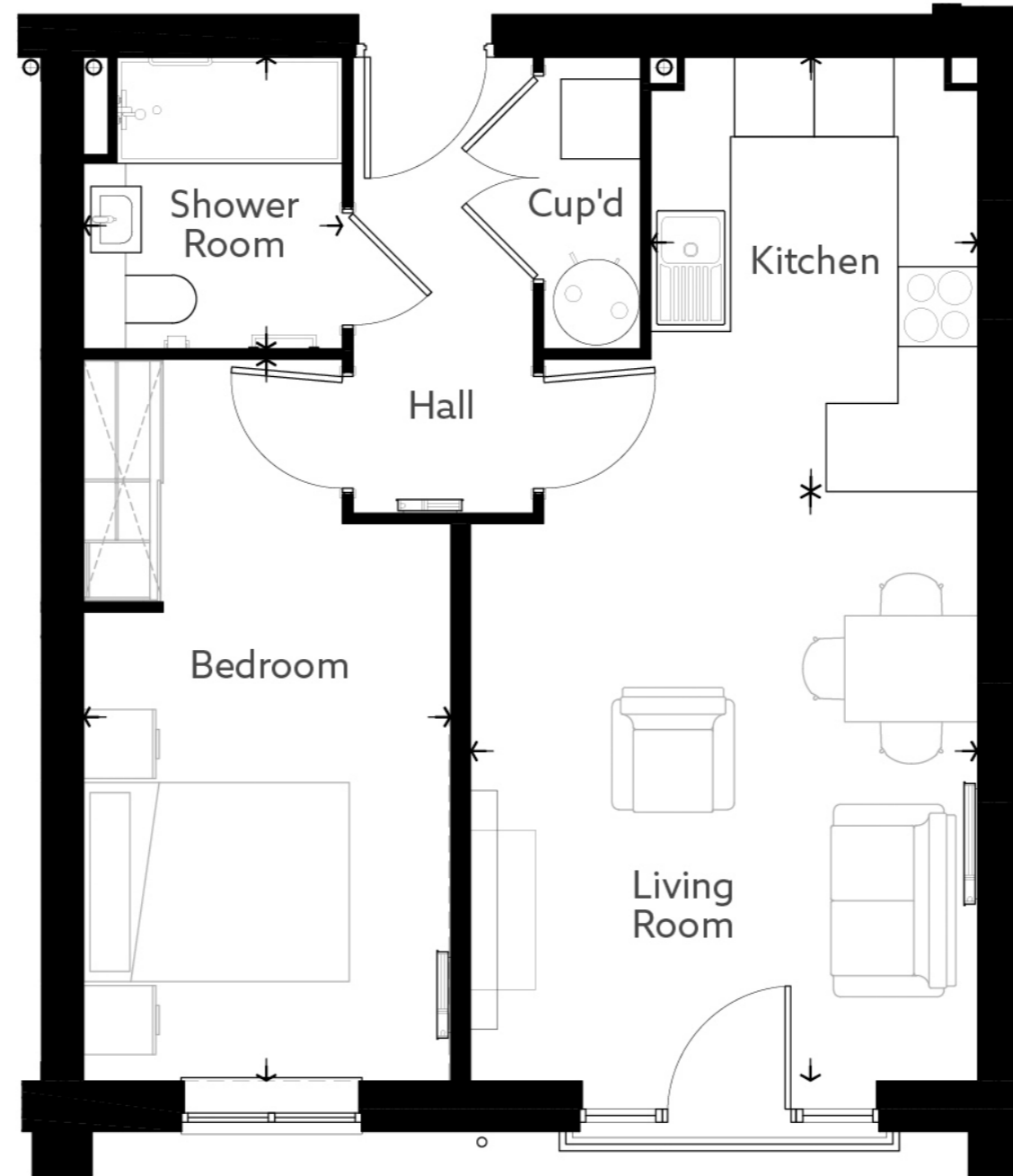
Living (Max)	15' 10" x 12' 5"	4830mm x 3795mm
Kitchen (Max)	8' 1" x 10' 9"	2473mm x 3275mm
Shower Room (Max)	7' 3" x 6' 9"	2221mm x 2050mm
Bedroom (Max)	11' 2" x 13' 1"	3400mm x 3991mm

Beesons House

Apartment 12

51.9 SQM

559.1 SQFT



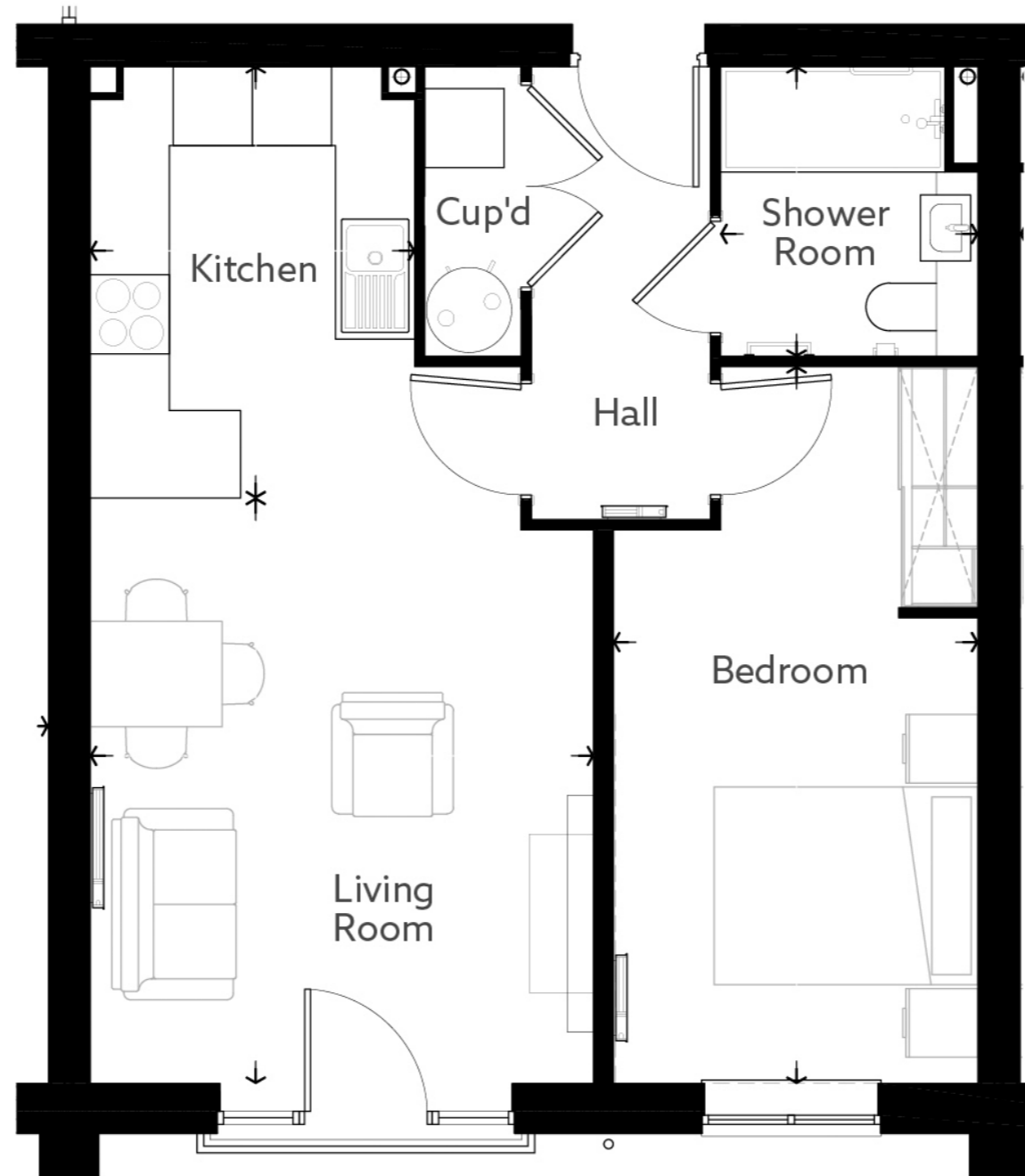
Living (Max)	14' 7" x 12' 6"	4443mm x 3816mm
Kitchen (Max)	10' 9" x 8' 1"	3275mm x 2460mm
Shower Room (Max)	7' 3" x 6' 5"	2200mm x 1950mm
Bedroom (Max)	17' 10" x 9' 1"	5441mm x 2764mm

Beesons House

Apartment 13

51.9 SQM

559.1 SQFT



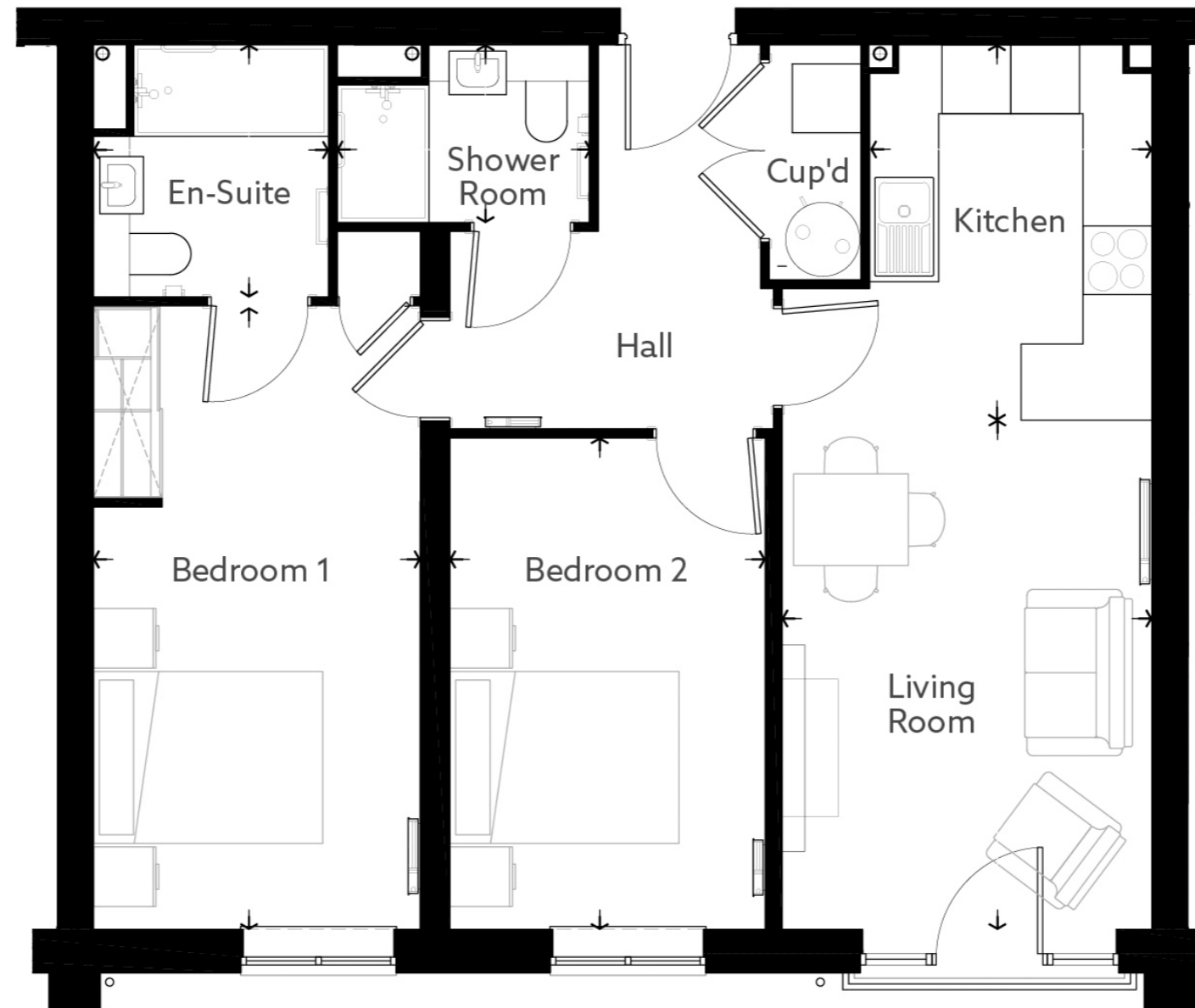
Living (Max)	14' 7" x 12' 6"	4443mm x 3816mm
Kitchen (Max)	10' 9" x 8' 1"	3275mm x 2460mm
Shower Room (Max)	7' 3" x 6' 5"	2200mm x 1950mm
Bedroom (Max)	17' 10" x 9' 1"	5441mm x 2764mm

Beesons House

Apartment 14

71.4 SQM

768 SQFT



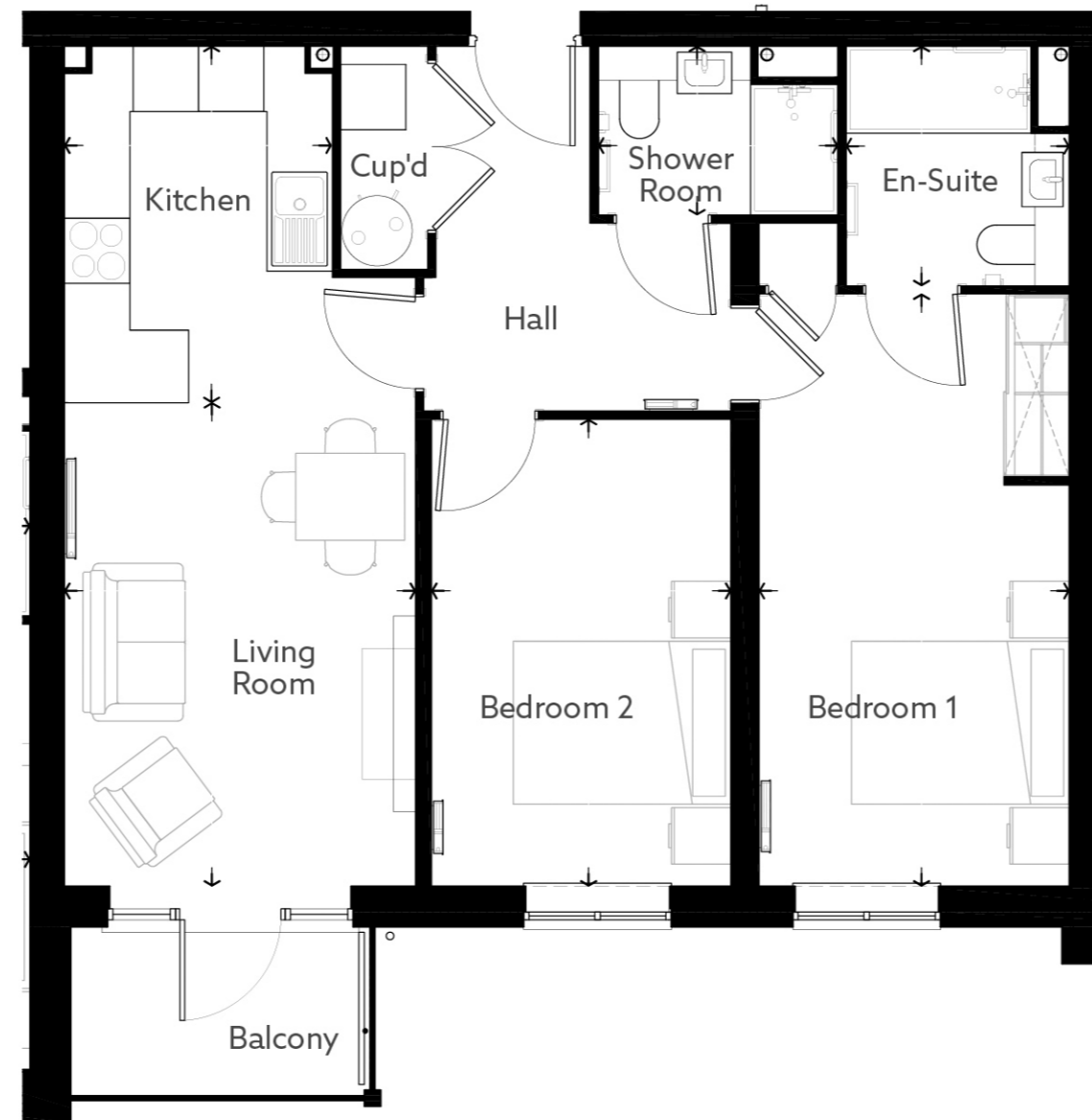
Living (Max)	10' 7" x 14' 7"	3225mm x 4443mm
Kitchen (Max)	8' 0" x 10' 9"	2451mm x 3275mm
Shower Room (Max)	6' 9" x 7' 3"	2050mm x 2200mm
Bedroom 1 (Max)	9' 4" x 17' 10"	2850mm x 5423mm
En-Suite (Max)	7' 3" x 5' 1"	2213mm x 1550mm
Bedroom 2 (Max)	9' 0" x 14' 1"	2750mm x 4288mm

Beesons House

Apartment 15

71.4 SQM

768 SQFT



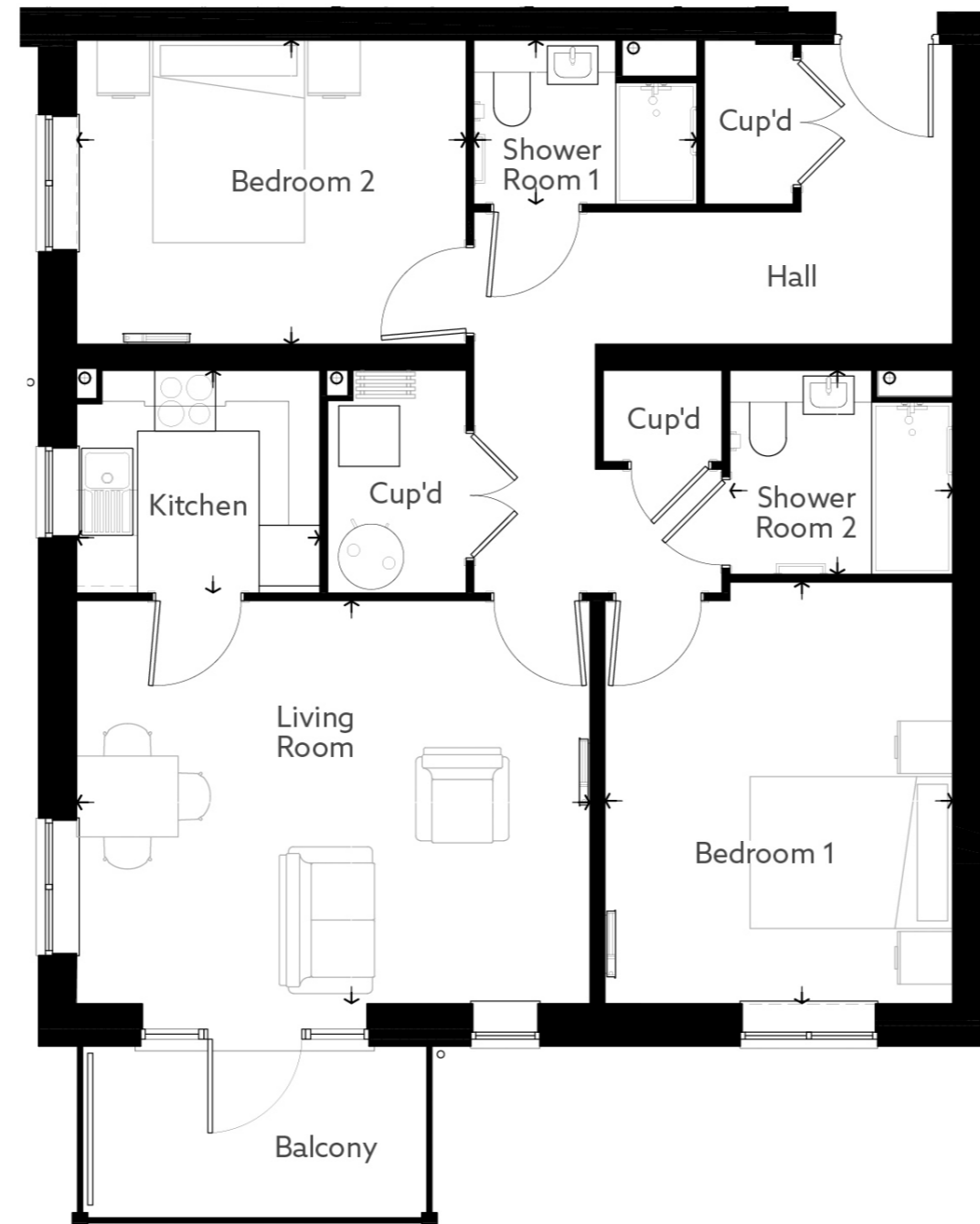
Living (Max)	10' 7" x 14' 7"	3225mm x 4443mm
Kitchen (Max)	8' 0" x 10' 9"	2451mm x 3275mm
En-Suite (Max)	7' 3" x 5' 1"	2200mm x 1550mm
Shower Room (Max)	6' 9" x 7' 3"	2050mm x 2200mm
Bedroom 1 (Max)	9' 4" x 17' 10"	2850mm x 5441mm
Bedroom 2 (Max)	9' 0" x 14' 1"	2750mm x 4288mm

Beesons House

Apartment 16

82.2 SQM

885.3 SQFT



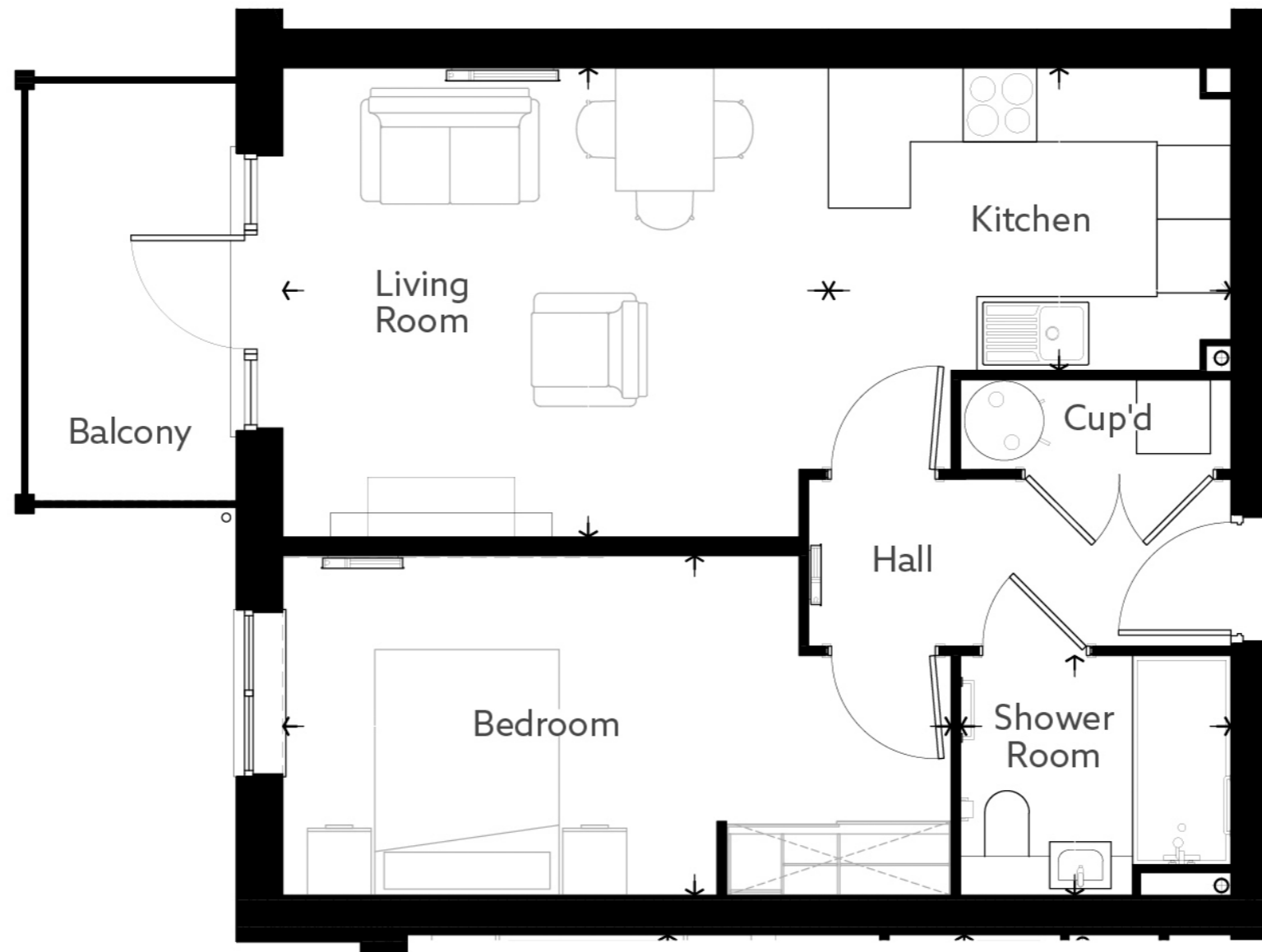
Living (Max)	16' 8" x 13' 1"	5067mm x 3981mm
Kitchen (Max)	7' 10" x 7' 3"	2400mm x 2200mm
Shower Room 1 (Max)	7' 3" x 5' 4"	2200mm x 1618mm
Bedroom 1 (Max)	11' 3" x 13' 8"	3433mm x 4166mm
Shower Room 2 (Max)	7' 3" x 6' 7"	2200mm x 2015mm
Bedroom 2 (Max)	12' 7" x 9' 10"	3845mm x 3000mm

Beesons House

Apartment 17

51.9 SQM

599.1 SQFT



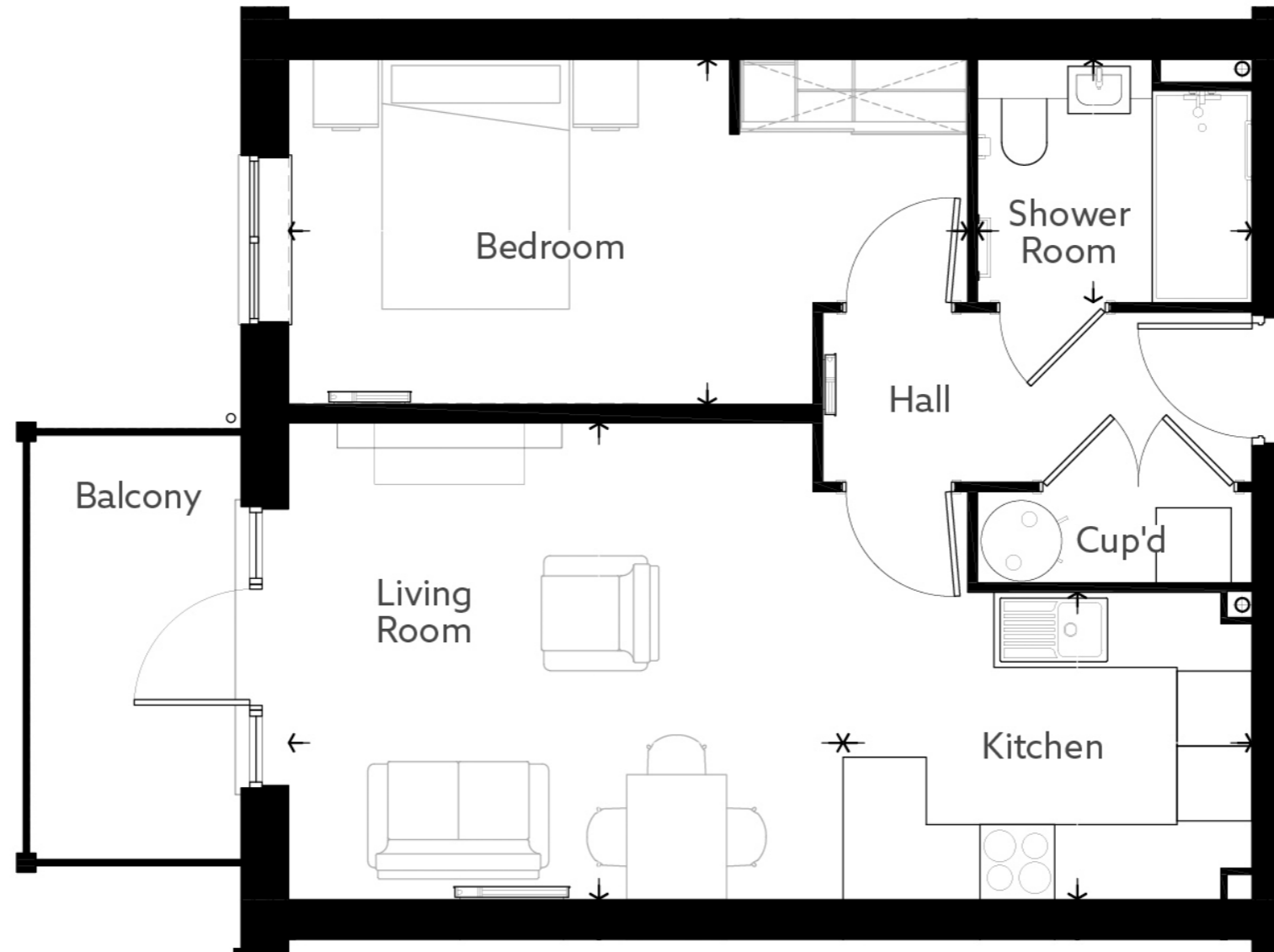
Living (Max)	14' 7" x 12' 6"	4443mm x 3816mm
Kitchen (Max)	10' 9" x 8' 1"	3275mm x 2460mm
Shower Room (Max)	7' 3" x 6' 5"	2200mm x 1950mm
Bedroom (Max)	17' 10" x 9' 1"	5441mm x 2764mm

Beesons House

Apartment 18

51.9 SQM

599.1 SQFT



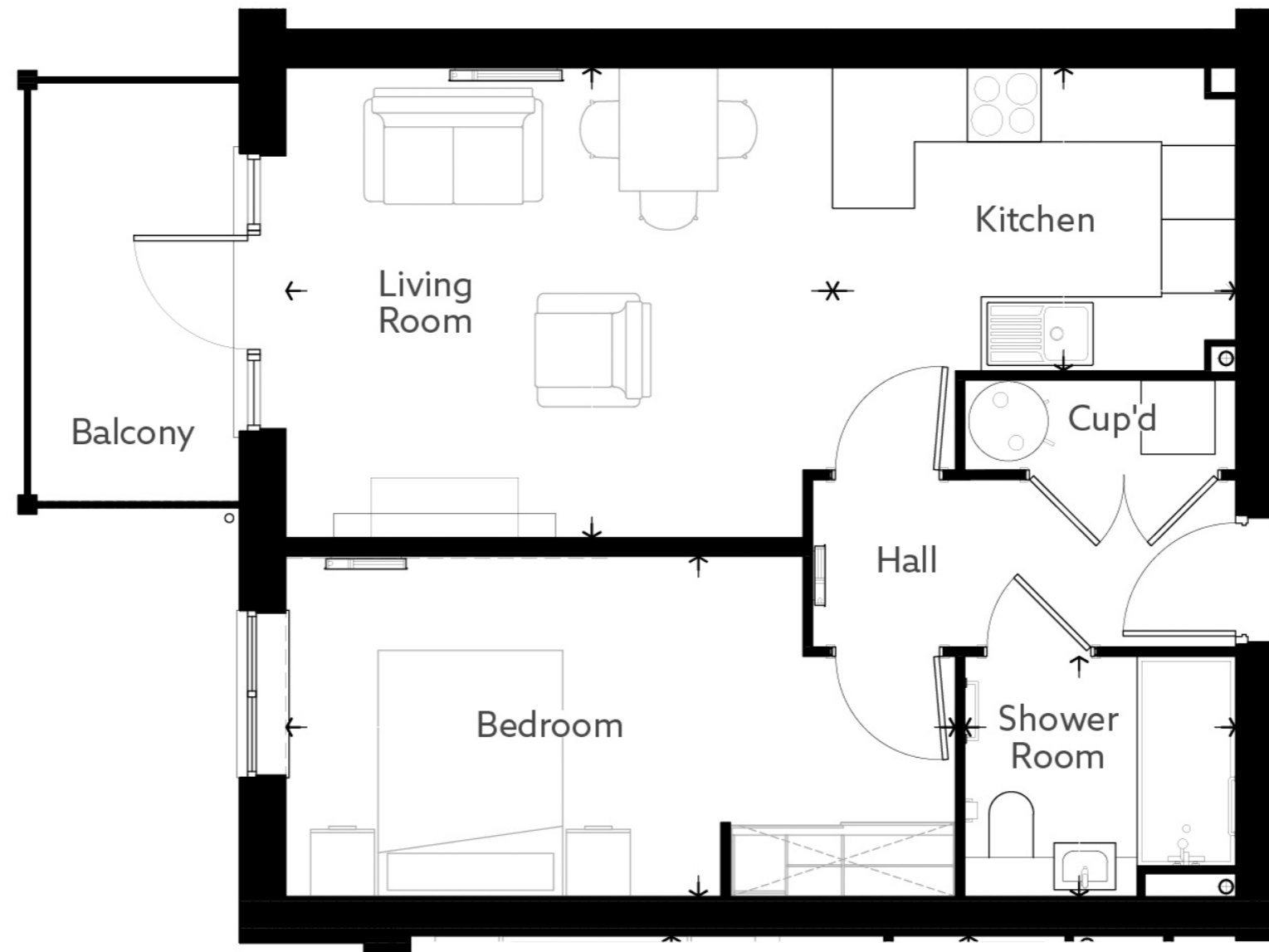
Living (Max)	14' 7" x 12' 6"	4443mm x 3816mm
Kitchen (Max)	10' 9" x 8' 1"	3275mm x 2460mm
Shower Room (Max)	7' 3" x 6' 5"	2200mm x 1950mm
Bedroom (Max)	17' 10" x 9' 1"	5441mm x 2764mm

Beesons House

Apartment 19

51.9 SQM

599.1 SQFT



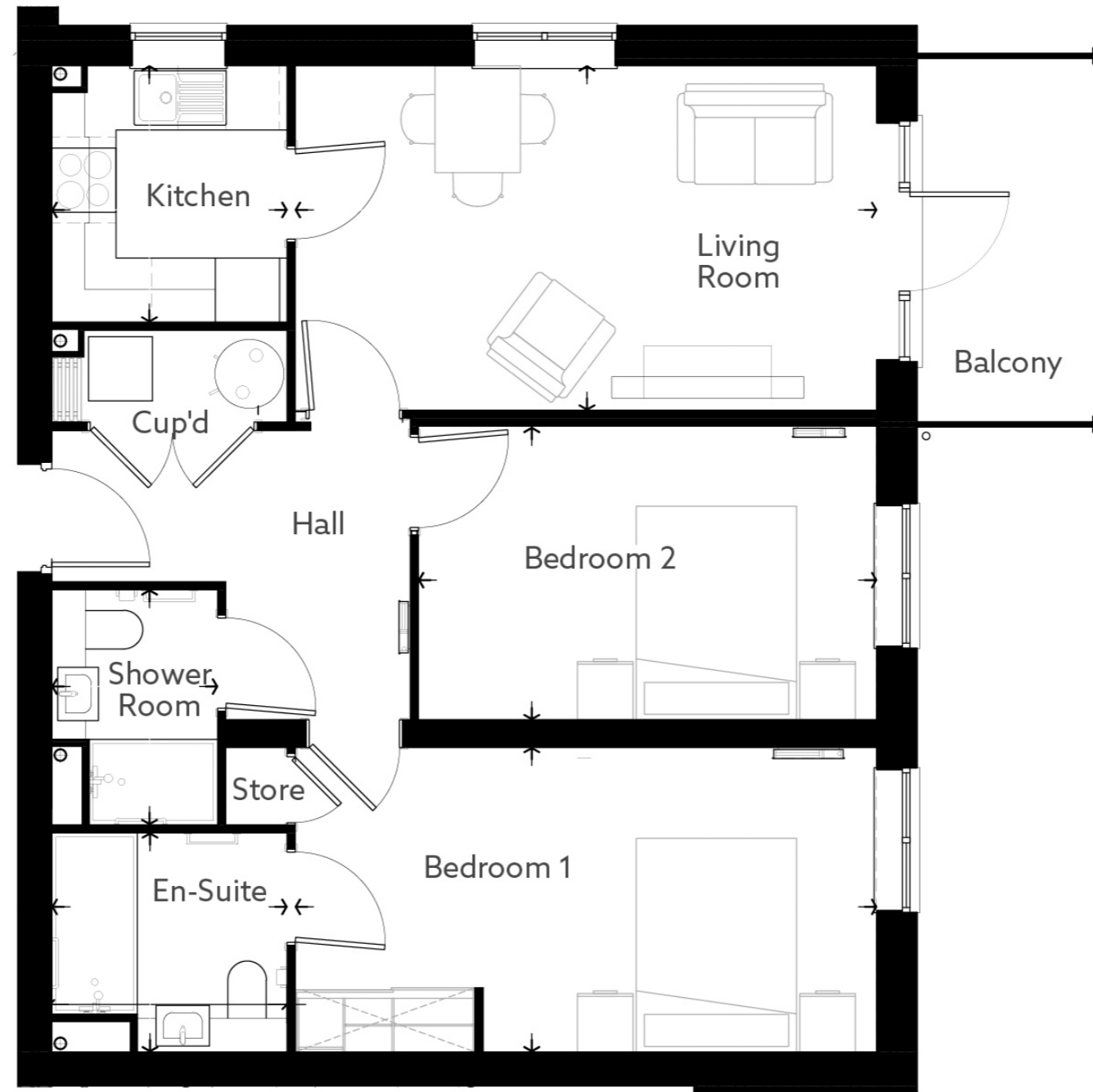
Living (Max)	14' 7" x 12' 6"	4443mm x 3816mm
Kitchen (Max)	10' 9" x 8' 1"	3275mm x 2460mm
Shower Room (Max)	7' 3" x 6' 5"	2200mm x 1950mm
Bedroom (Max)	17' 10" x 9' 1"	5441mm x 2764mm

Beesons House

Apartment 20

71.4 SQM

768 SQFT



Living (Max)	10' 7" x 17' 10"	3225mm x 5441mm
Kitchen (Max)	7' 10" x 7' 3"	2400mm x 2200mm
Shower Room (Max)	7' 3" x 5' 1"	2200mm x 1550mm
Bedroom 1 (Max)	9' 4" x 17' 10"	2850mm x 5441mm
En-Suite (Max)	6' 9" x 7' 3"	2050mm x 2200mm
Bedroom 2 (Max)	9' 0" x 14' 1"	2738mm x 4288mm

Beesons House

Apartment 21

79.4 SQM

854.2 SQFT



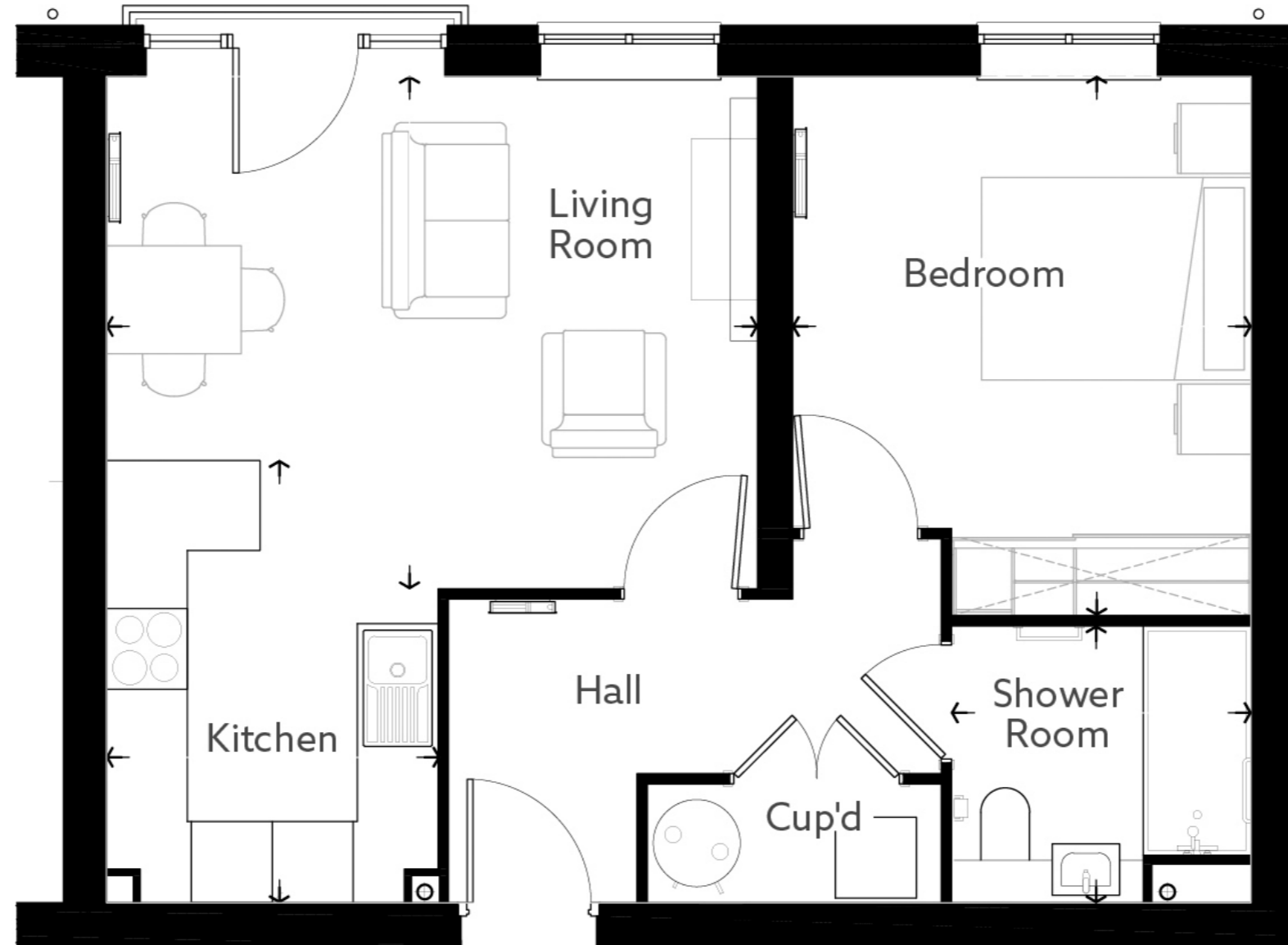
Living (Max)	11' 7" x 19' 11"	3542mm x 6075mm
Kitchen (Max)	7' 10" x 7' 3"	2400mm x 2200mm
Shower Room (Max)	5' 4" x 7' 3"	1618mm x 2200mm
Bedroom 1 (Max)	9' 10" x 13' 1"	2988mm x 3986mm
En-Suite (Max)	7' 3" x 6' 9"	2200mm x 2050mm
Bedroom 2 (Max)	9' 2" x 13' 0"	2800mm x 3953mm

Beesons House

Apartment 22

52 SQM

559.5 SQFT



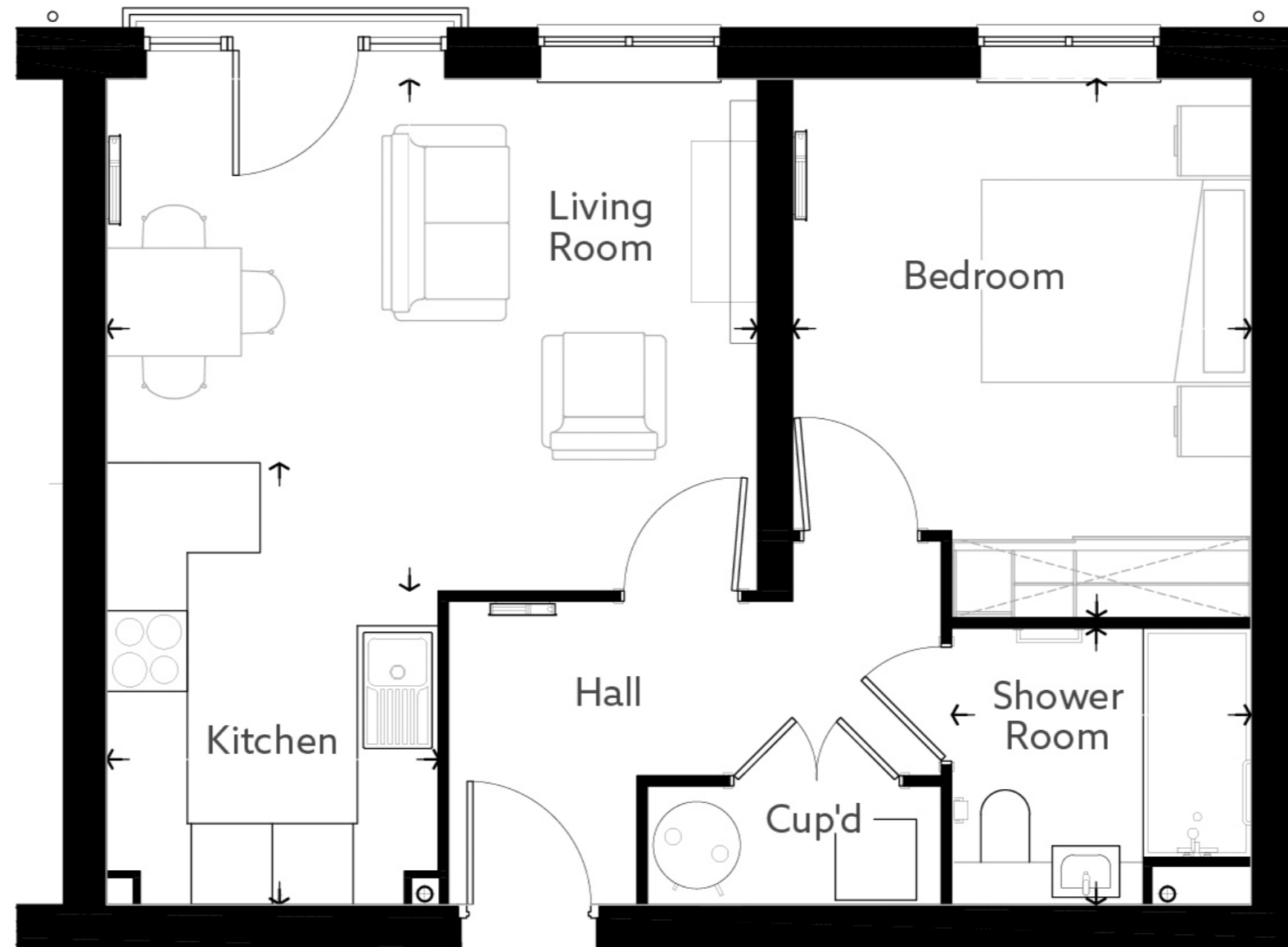
Living (Max)	15' 10" x 12' 5"	4830mm x 3795mm
Kitchen (Max)	8' 1" x 10' 9"	2473mm x 3275mm
Shower Room (Max)	7' 3" x 6' 9"	2221mm x 2050mm
Bedroom (Max)	11' 2" x 13' 1"	3400mm x 3991mm

Beesons House

Apartment 23

52 SQM

559.5 SQFT



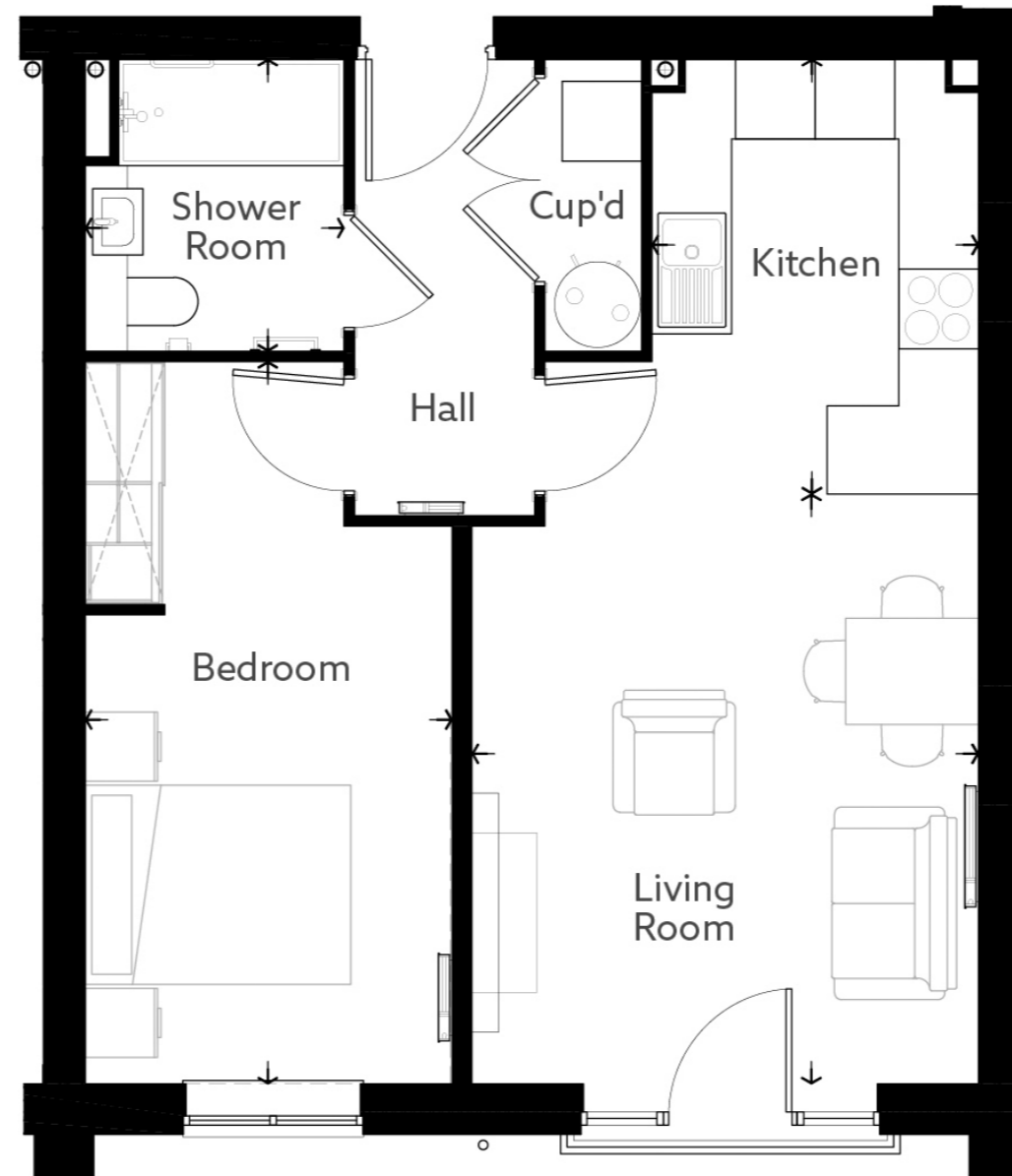
Living (Max)	15' 10" x 12' 5"	4830mm x 3795mm
Kitchen (Max)	8' 1" x 10' 9"	2473mm x 3275mm
Shower Room (Max)	7' 3" x 6' 9"	2221mm x 2050mm
Bedroom (Max)	11' 2" x 13' 1"	3400mm x 3991mm

Beesons House

Apartment 24

51.9 SQM

559.1 SQFT



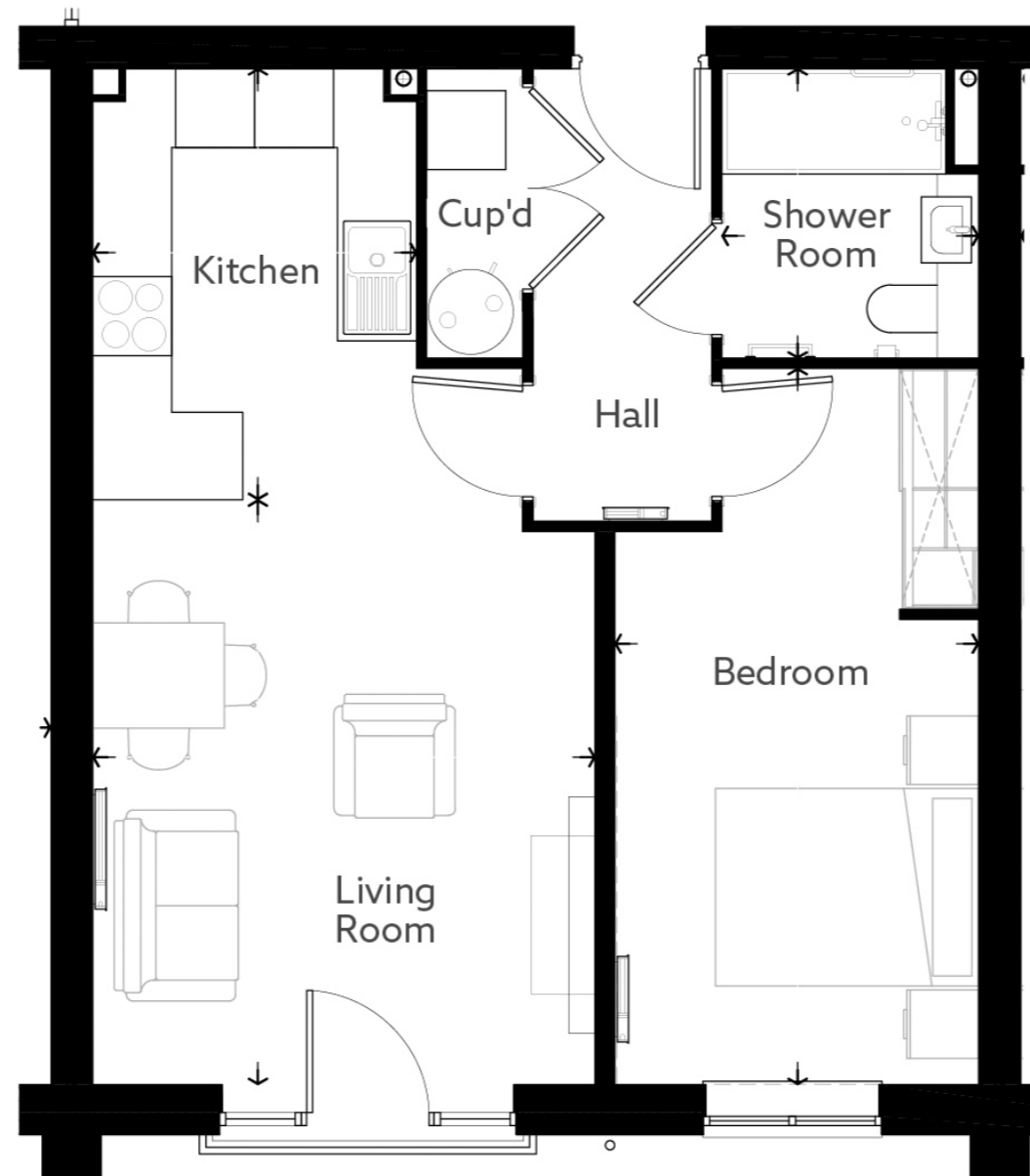
Living (Max)	14' 7" x 12' 6"	4443mm x 3816mm
Kitchen (Max)	10' 9" x 8' 1"	3275mm x 2460mm
Shower Room (Max)	7' 3" x 6' 5"	2200mm x 1950mm
Bedroom (Max)	17' 10" x 9' 1"	5441mm x 2764mm

Beesons House

Apartment 25

51.9 SQM

559.1 SQFT



Living (Max)	14' 7" x 12' 6"	4443mm x 3816mm
Kitchen (Max)	10' 9" x 8' 1"	3275mm x 2460mm
Shower Room (Max)	7' 3" x 6' 5"	2200mm x 1950mm
Bedroom (Max)	17' 10" x 9' 1"	5441mm x 2764mm

Beesons House

Apartment 26

71.4 SQM

768 SQFT



Living (Max)	10' 7" x 14' 7"	3225mm x 4443mm
Kitchen (Max)	8' 0" x 10' 9"	2451mm x 3275mm
Shower Room (Max)	6' 9" x 7' 3"	2050mm x 2200mm
Bedroom 1 (Max)	9' 4" x 17' 10"	2850mm x 5423mm
En-Suite (Max)	7' 3" x 5' 1"	2213mm x 1550mm
Bedroom 2 (Max)	9' 0" x 14' 1"	2750mm x 4288mm

Beesons House

Apartment 27

71.4 SQM

768 SQFT



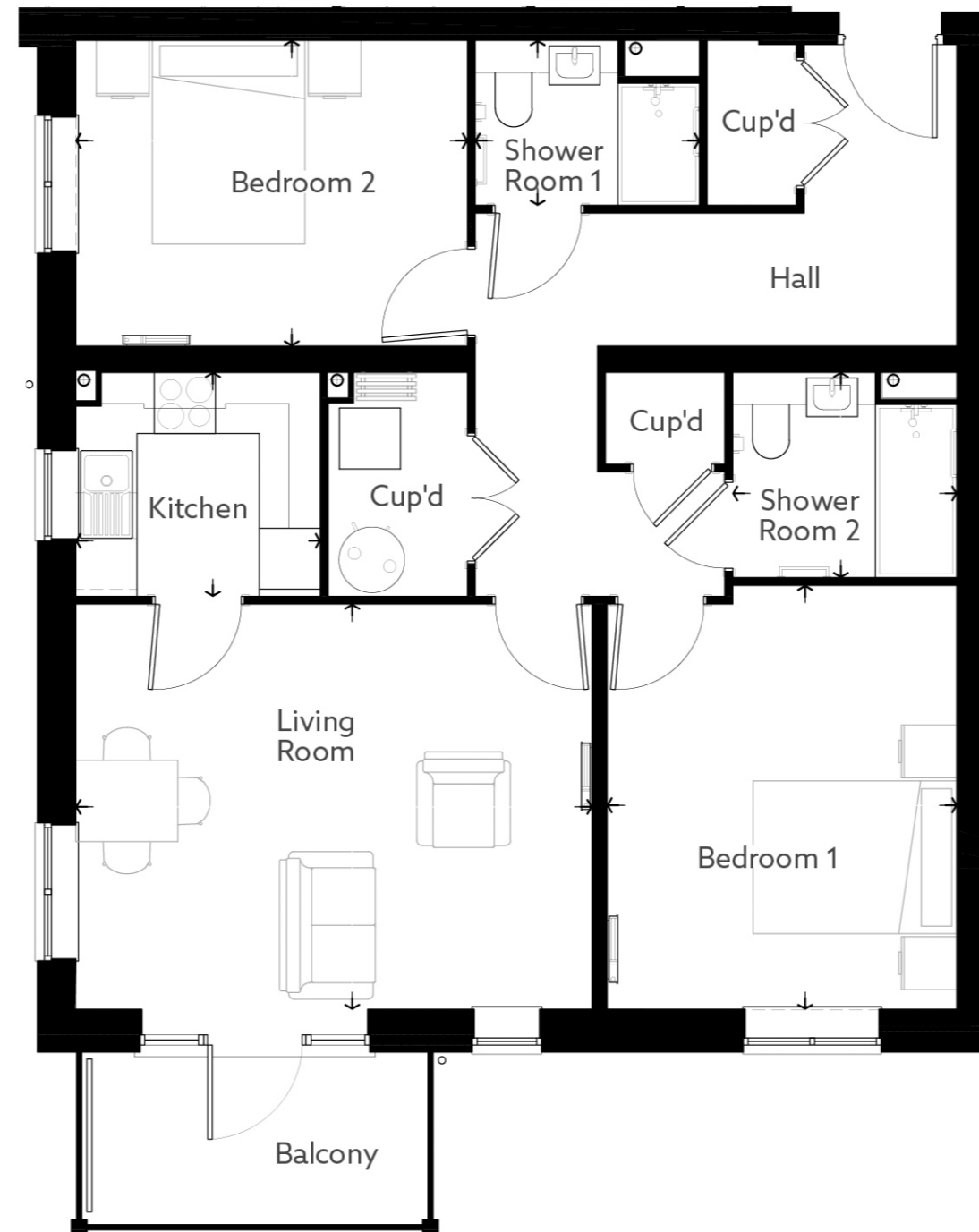
Living (Max)	10' 7" x 14' 7"	3225mm x 4443mm
Kitchen (Max)	8' 0" x 10' 9"	2451mm x 3275mm
En-Suite (Max)	7' 3" x 5' 1"	2200mm x 1550mm
Shower Room (Max)	6' 9" x 7' 3"	2050mm x 2200mm
Bedroom 1 (Max)	9' 4" x 17' 10"	2850mm x 5441mm
Bedroom 2 (Max)	9' 0" x 14' 1"	2750mm x 4288mm

Beesons House

Apartment 28

82.2 SQM

885.3 SQFT



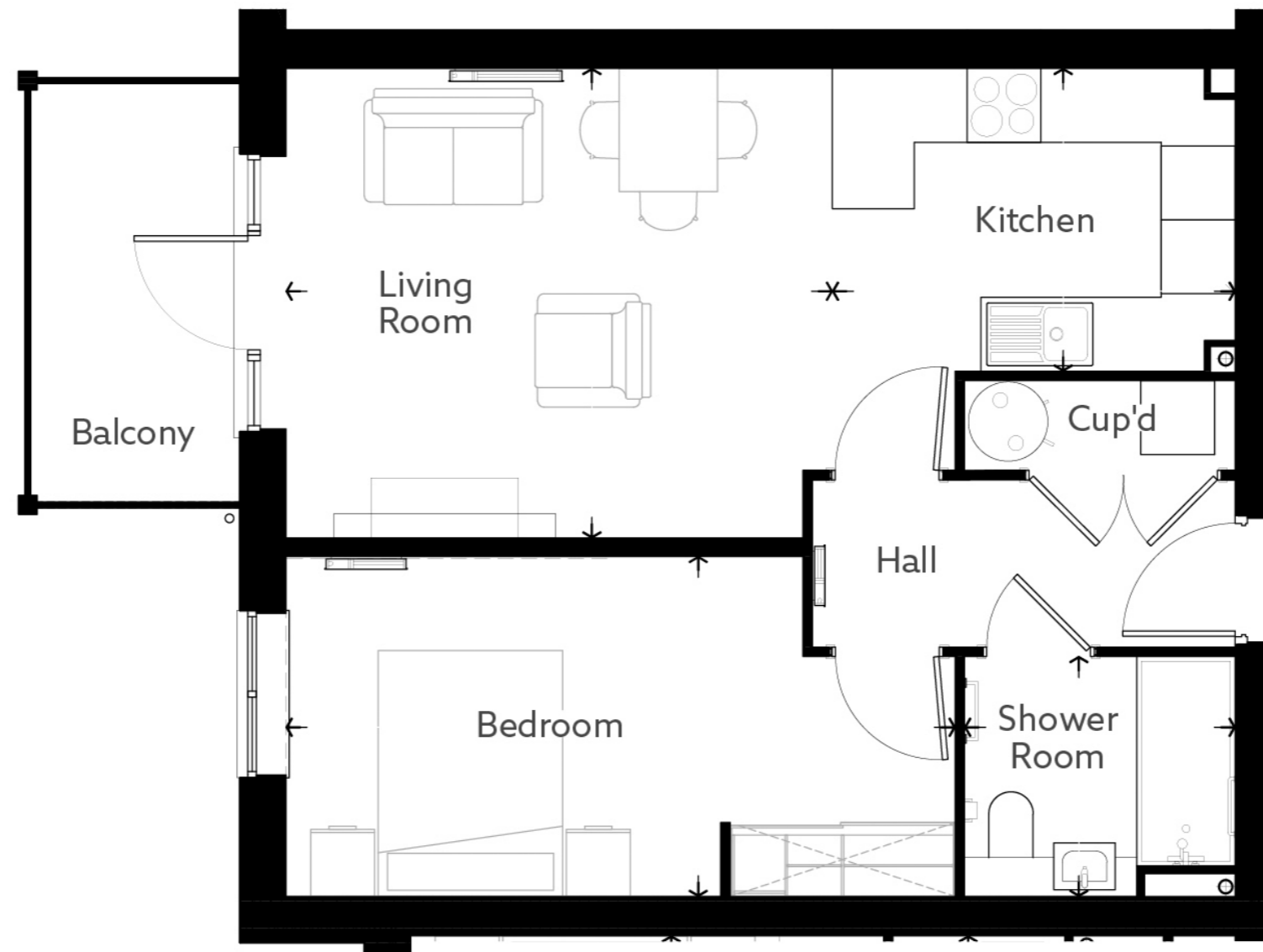
Living (Max)	16' 8" x 13' 1"	5067mm x 3981mm
Kitchen (Max)	7' 10" x 7' 3"	2400mm x 2200mm
Shower Room 1 (Max)	7' 3" x 5' 4"	2200mm x 1618mm
Bedroom 1 (Max)	11' 3" x 13' 8"	3433mm x 4166mm
Shower Room 2 (Max)	7' 3" x 6' 7"	2200mm x 2015mm
Bedroom 2 (Max)	12' 7" x 9' 10"	3845mm x 3000mm

Beesons House

Apartment 29

51.9 SQM

599.1 SQFT



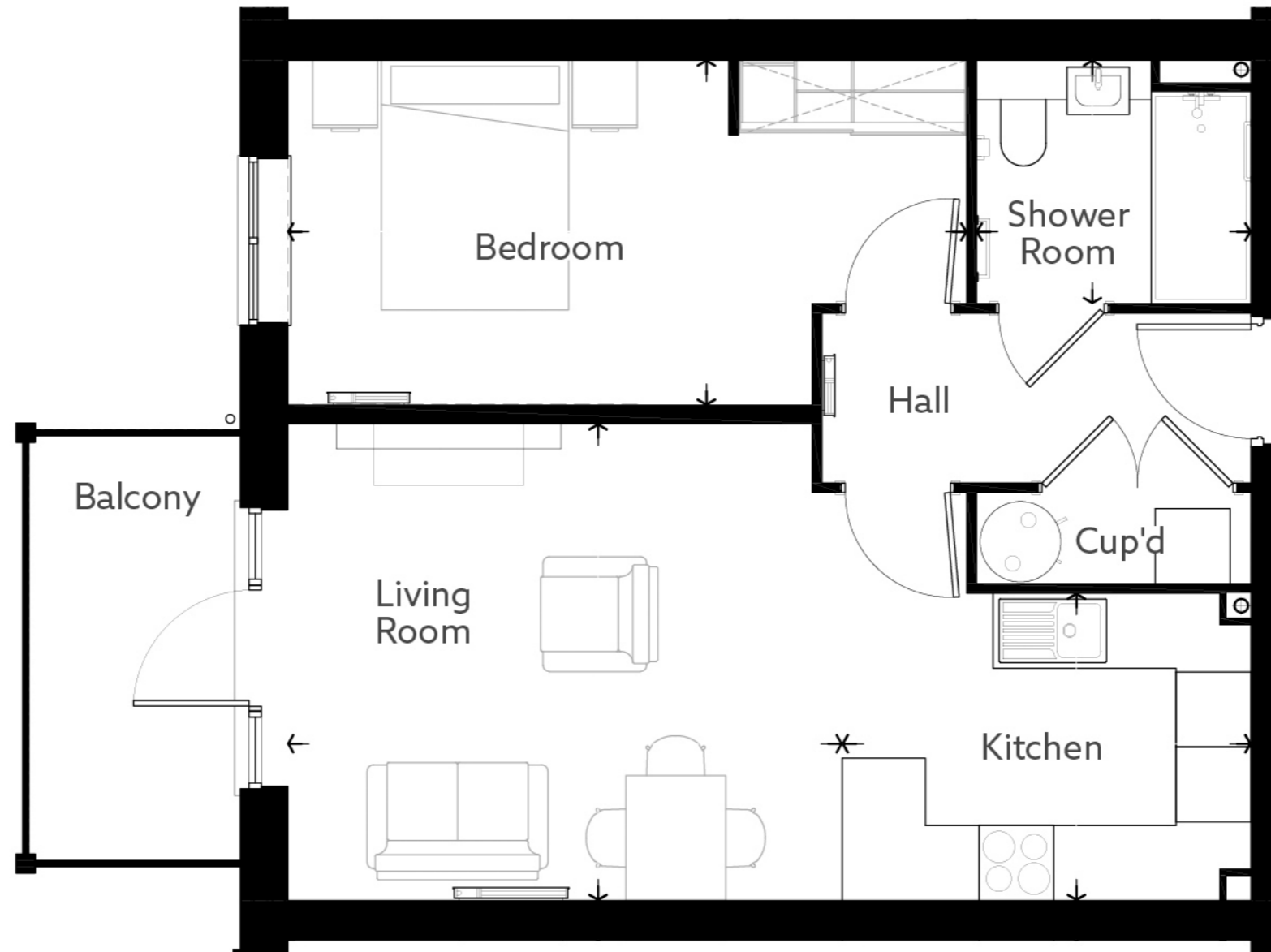
Living (Max)	14' 7" x 12' 6"	4443mm x 3816mm
Kitchen (Max)	10' 9" x 8' 1"	3275mm x 2460mm
Shower Room (Max)	7' 3" x 6' 5"	2200mm x 1950mm
Bedroom (Max)	17' 10" x 9' 1"	5441mm x 2764mm

Beesons House

Apartment 30

51.9 SQM

599.1 SQFT



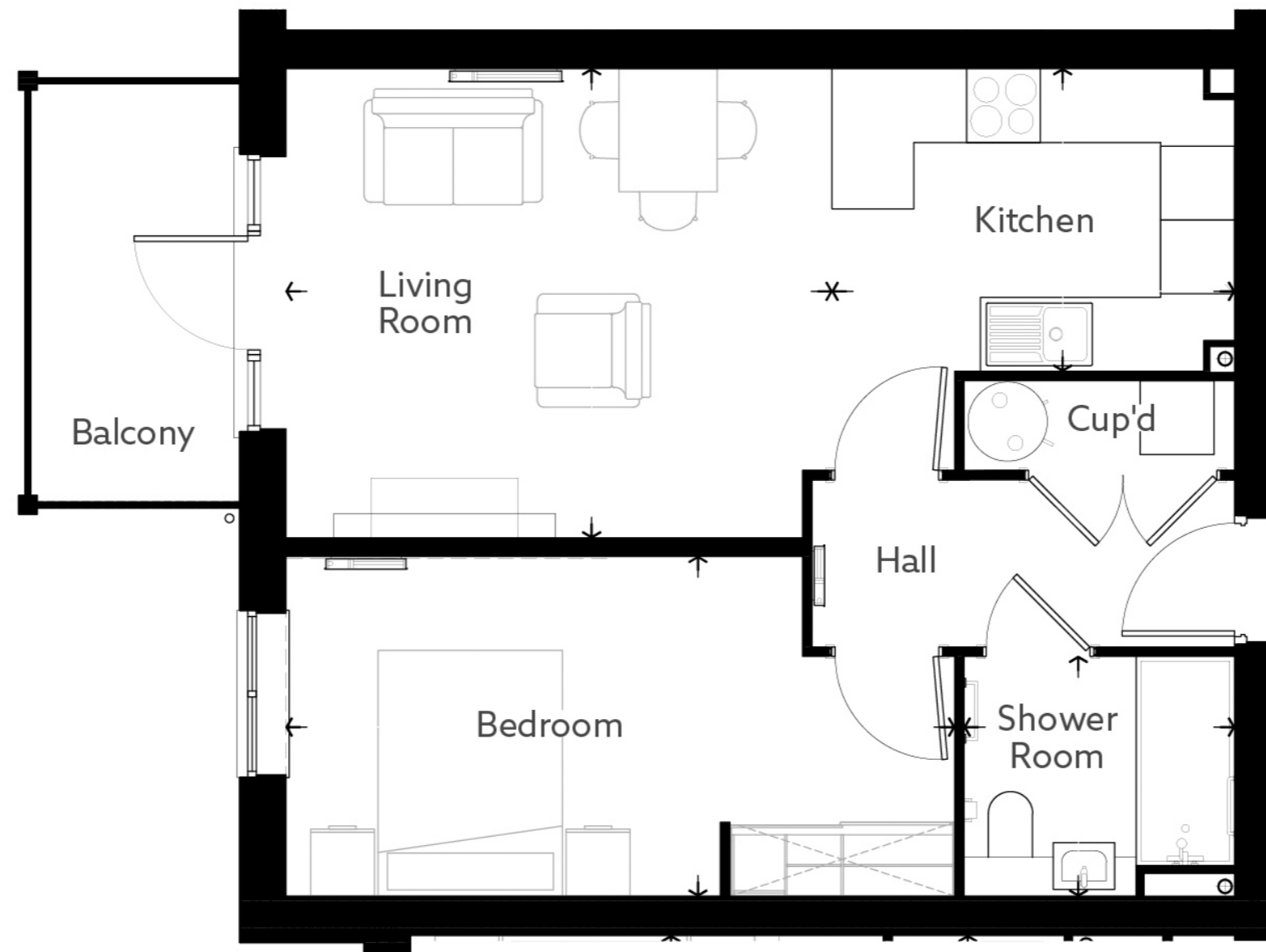
Living (Max)	14' 7" x 12' 6"	4443mm x 3816mm
Kitchen (Max)	10' 9" x 8' 1"	3275mm x 2460mm
Shower Room (Max)	7' 3" x 6' 5"	2200mm x 1950mm
Bedroom (Max)	17' 10" x 9' 1"	5441mm x 2764mm

Beesons House

Apartment 31

51.9 SQM

599.1 SQFT



Living (Max)	14' 7" x 12' 6"	4443mm x 3816mm
Kitchen (Max)	10' 9" x 8' 1"	3275mm x 2460mm
Shower Room (Max)	7' 3" x 6' 5"	2200mm x 1950mm
Bedroom (Max)	17' 10" x 9' 1"	5441mm x 2764mm

Beesons House

Apartment 32

71.4 SQM

768 SQFT



Living (Max)	10' 7" x 17' 10"	3225mm x 5441mm
Kitchen (Max)	7' 10" x 7' 3"	2400mm x 2200mm
Shower Room (Max)	7' 3" x 5' 1"	2200mm x 1550mm
Bedroom 1 (Max)	9' 4" x 17' 10"	2850mm x 5441mm
En-Suite (Max)	6' 9" x 7' 3"	2050mm x 2200mm
Bedroom 2 (Max)	9' 0" x 14' 1"	2738mm x 4288mm

Beesons House

Apartment 33

79.4 SQM

858.4 SQFT



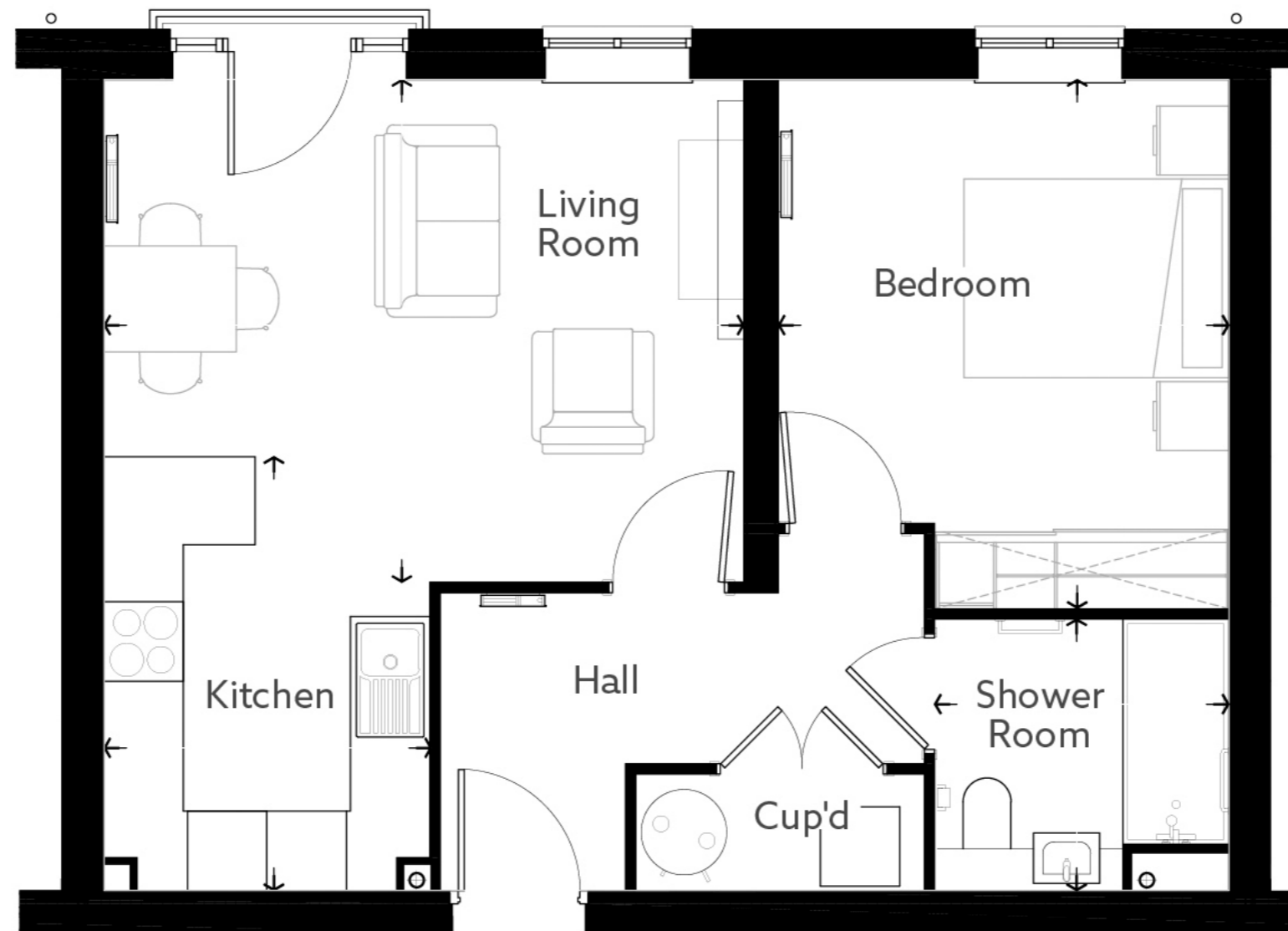
Living (Max)	12' 0" x 19' 11"	3657mm x 6075mm
Kitchen (Max)	8' 1" x 10' 8"	2465mm x 3247mm
Shower Room (Max)	5' 4" x 7' 3"	1618mm x 2200mm
Bedroom 1 (Max)	9' 10" x 13' 1"	2988mm x 3986mm
En-Suite (Max)	7' 3" x 6' 9"	2200mm x 2050mm
Bedroom 2 (Max)	9' 2" x 13' 0"	2800mm x 3953mm

Beesons House

Apartment 34

52 SQM

559.5 SQFT



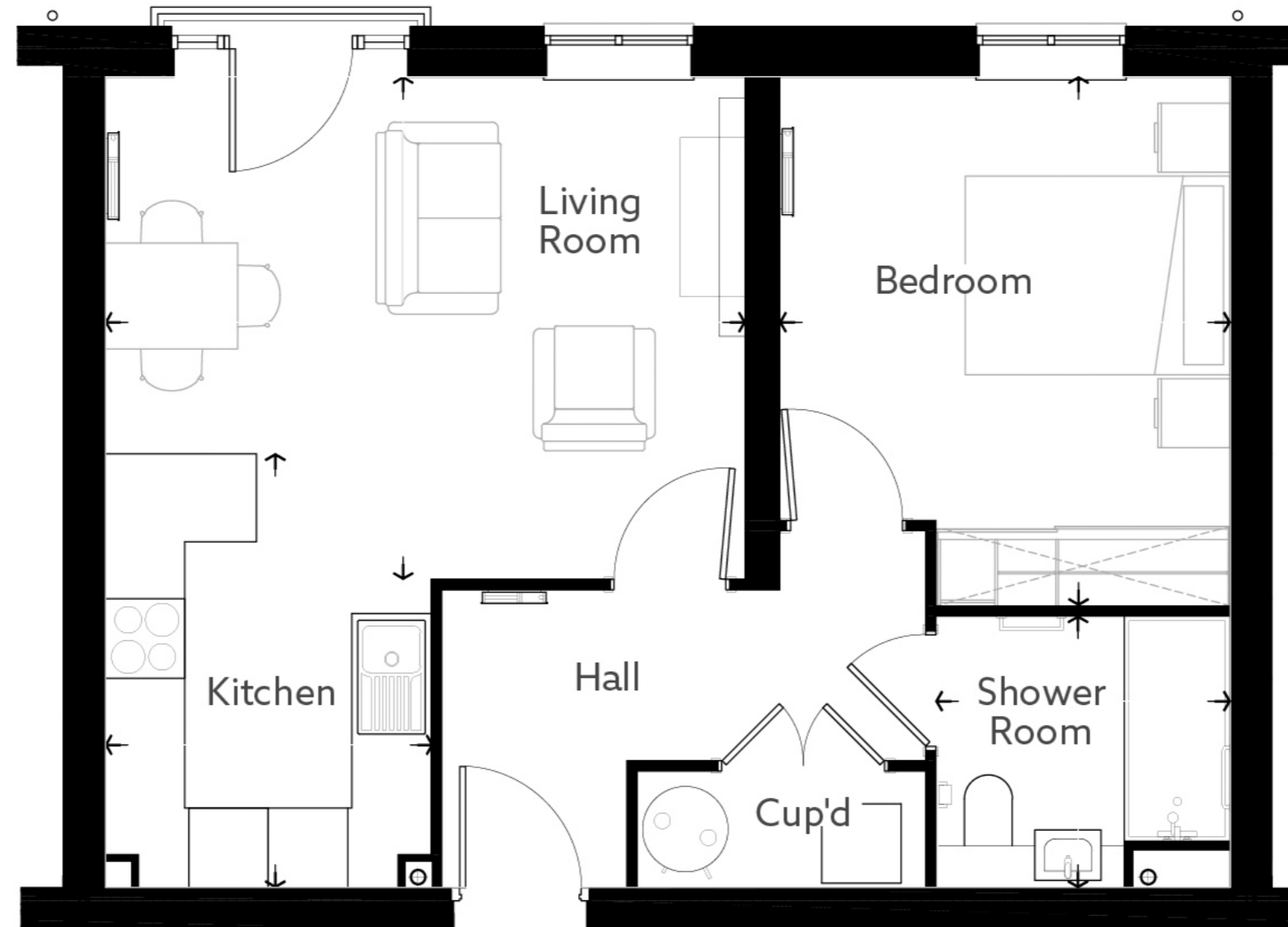
Living (Max)	15' 10" x 12' 5"	4830mm x 3795mm
Kitchen (Max)	8' 1" x 10' 9"	2473mm x 3275mm
Shower Room (Max)	7' 3" x 6' 9"	2221mm x 2050mm
Bedroom (Max)	11' 2" x 13' 1"	3400mm x 3991mm

Beesons House

Apartment 35

52 SQM

559.5 SQFT



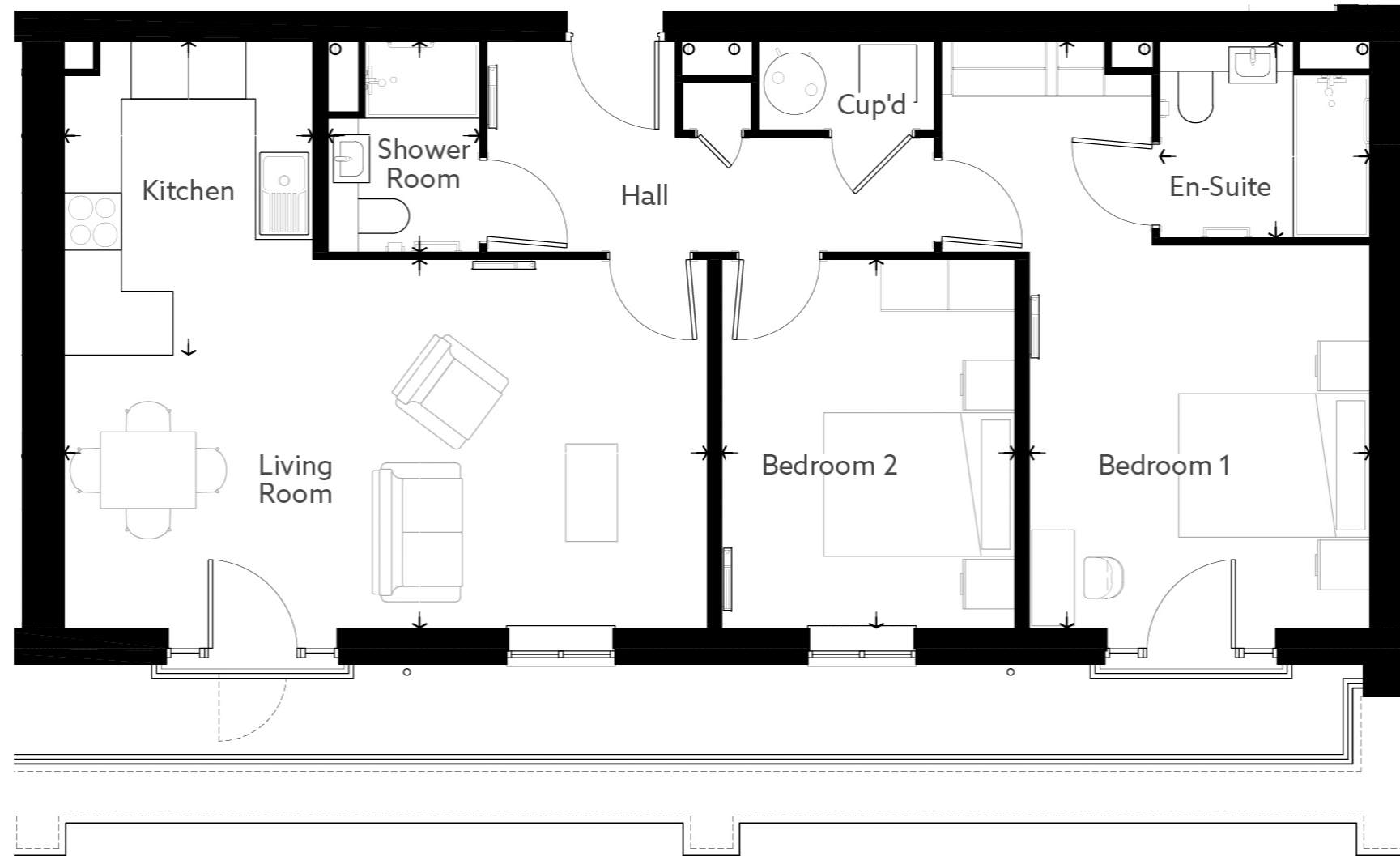
Living (Max)	15' 10" x 12' 5"	4830mm x 3795mm
Kitchen (Max)	8' 1" x 10' 9"	2473mm x 3275mm
Shower Room (Max)	7' 3" x 6' 9"	2221mm x 2050mm
Bedroom (Max)	11' 2" x 13' 1"	3400mm x 3991mm

Beesons House

Apartment 36

84 SQM

903.9 SQFT



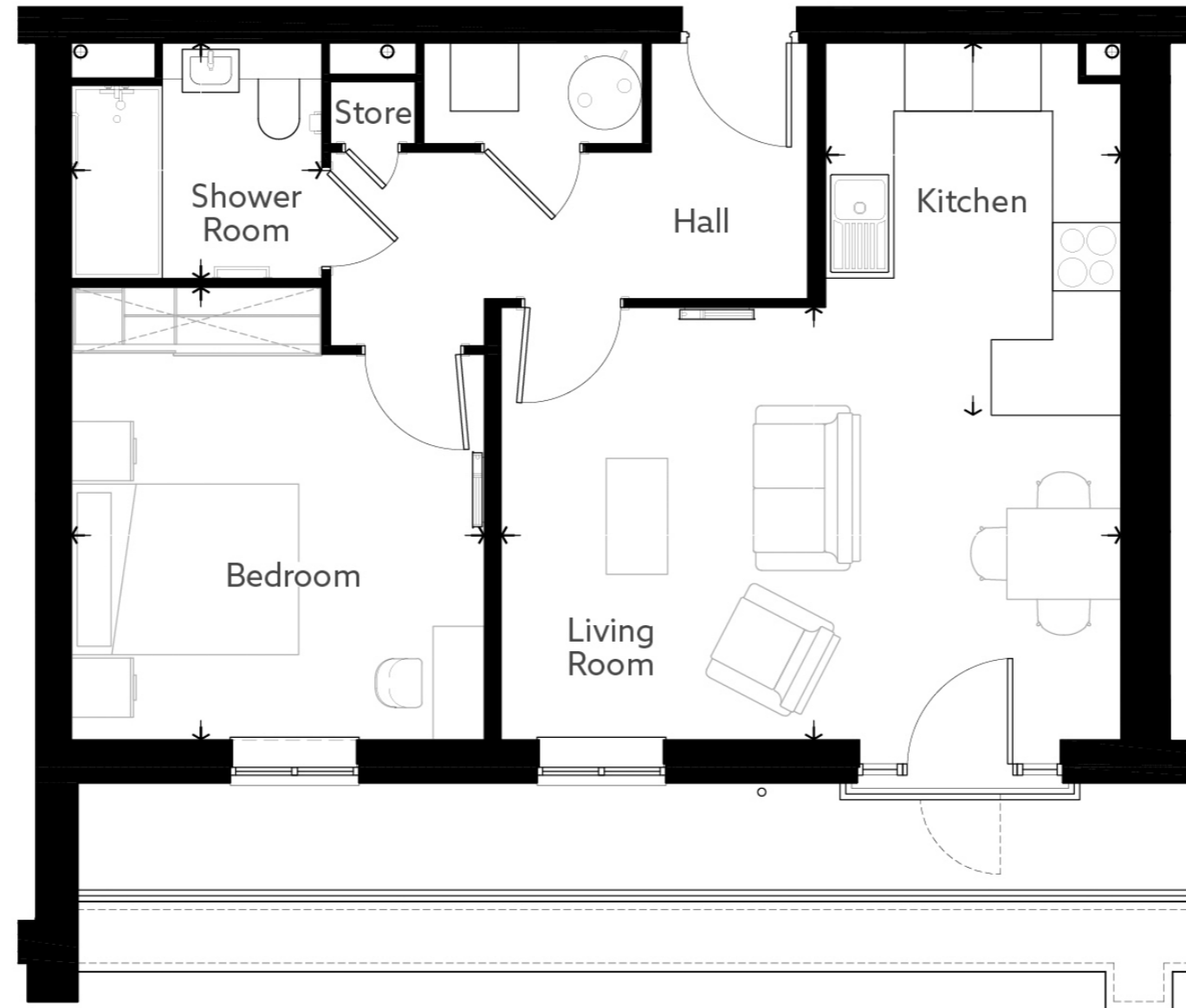
Living (Max)	22' 1" x 12' 8"	6733mm x 3853mm
Kitchen (Max)	8' 6" x 10' 9"	2602mm x 3275mm
Shower Room (Max)	5' 2" x 7' 3"	1585mm x 2200mm
Bedroom 1 (Max)	11' 8" x 20' 1"	3564mm x 6130mm
En-Suite (Max)	7' 3" x 6' 9"	2200mm x 2050mm
Bedroom 2 (Max)	10' 1" x 12' 8"	3068mm x 3853mm

Beesons House

Apartment 37

56.7 SOM

610.4 SQFT



Living (Max)	17' 11" x 12' 6"	5452mm x 3803mm
Kitchen (Max)	8' 6" x 10' 9"	2598mm x 3275mm
Shower Room (Max)	7' 3" x 6' 10"	2200mm x 2074mm
Bedroom (Max)	11' 11" x 13' 1"	3633mm x 3981mm

Beesons House

Apartment 38

71.4 SQM

768 SQFT



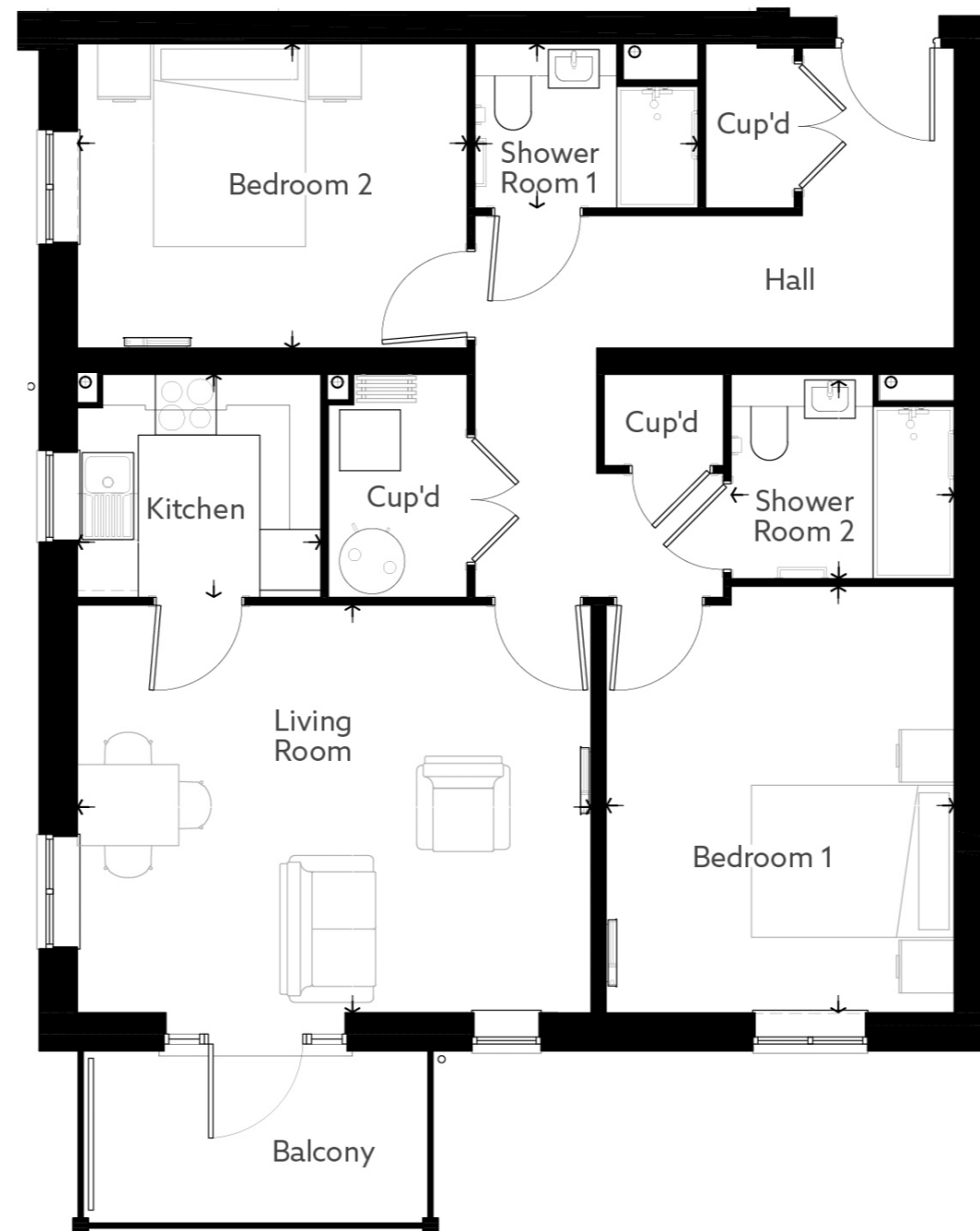
Living (Max)	10' 7" x 14' 7"	3225mm x 4442mm
Kitchen (Max)	8' 0" x 10' 9"	2451mm x 3275mm
Shower Room (Max)	7' 3" x 5' 1"	2200mm x 1550mm
Bedroom 1 (Max)	9' 4" x 17' 10"	2850mm x 5441mm
En-Suite (Max)	6' 9" x 7' 3"	2050mm x 2200mm
Bedroom 2 (Max)	9' 0" x 14' 1"	2750mm x 4287mm

Beesons House

Apartment 39

74.3 SQM

799.5 SQFT



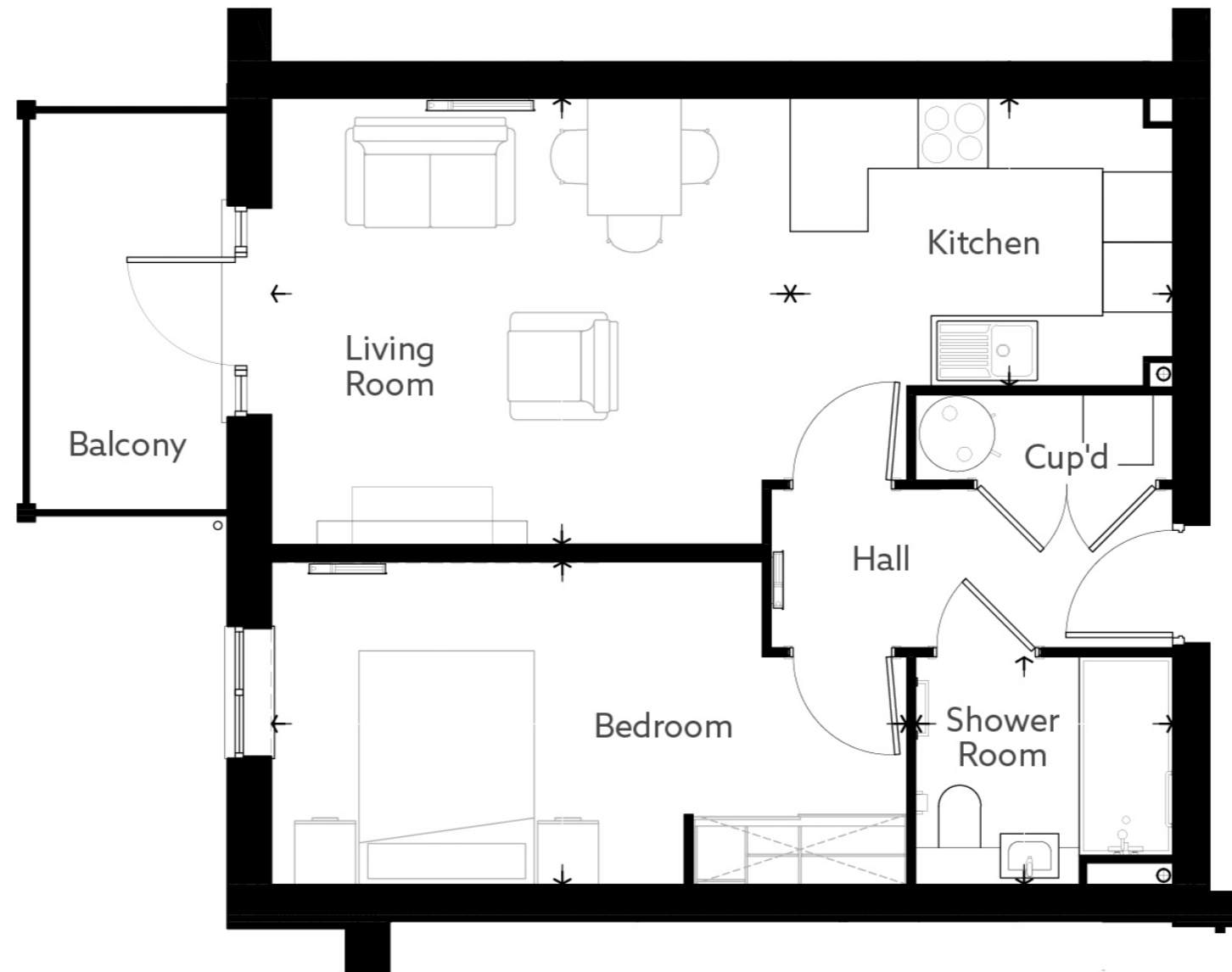
Living (Max)	16' 8" x 13' 2"	5067mm x 4021mm
Kitchen (Max)	7' 10" x 7' 3"	2400mm x 2200mm
Shower Room 1 (Max)	7' 3" x 5' 4"	2200mm x 1618mm
Bedroom 1 (Max)	11' 3" x 13' 10"	3433mm x 4206mm
Shower Room 2 (Max)	7' 3" x 6' 5"	2200mm x 1954mm
Bedroom 2 (Max)	12' 7" x 9' 10"	3845mm x 3000mm

Beesons House

Apartment 40

51.9 SQM

599.1 SQFT



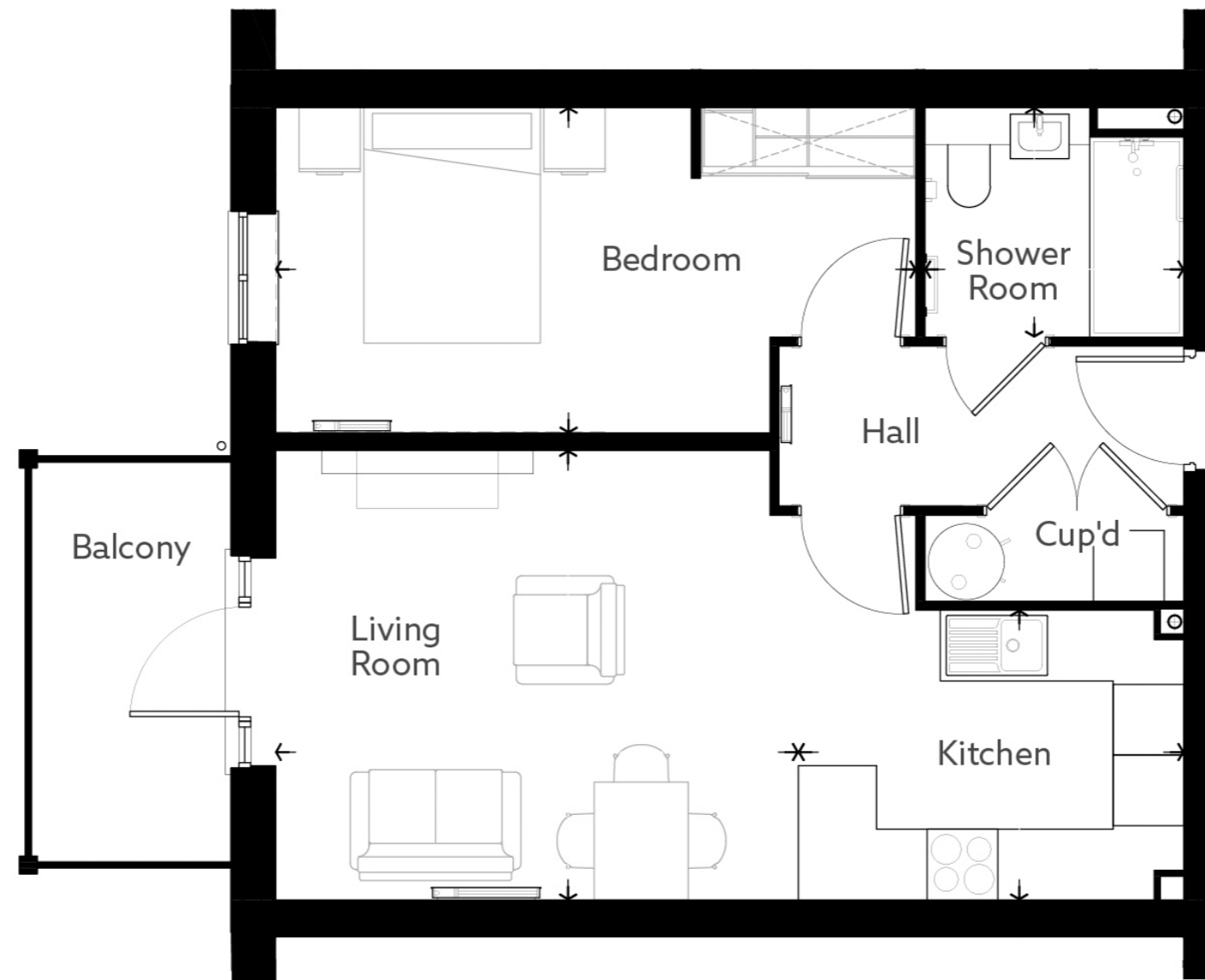
Living (Max)	14' 7" x 12' 6"	4443mm x 3816mm
Kitchen (Max)	10' 9" x 8' 1"	3275mm x 2460mm
Shower Room (Max)	7' 3" x 6' 5"	2200mm x 1950mm
Bedroom (Max)	17' 10" x 9' 1"	5441mm x 2764mm

Beesons House

Apartment 41

51.9 SQM

599.1 SQFT



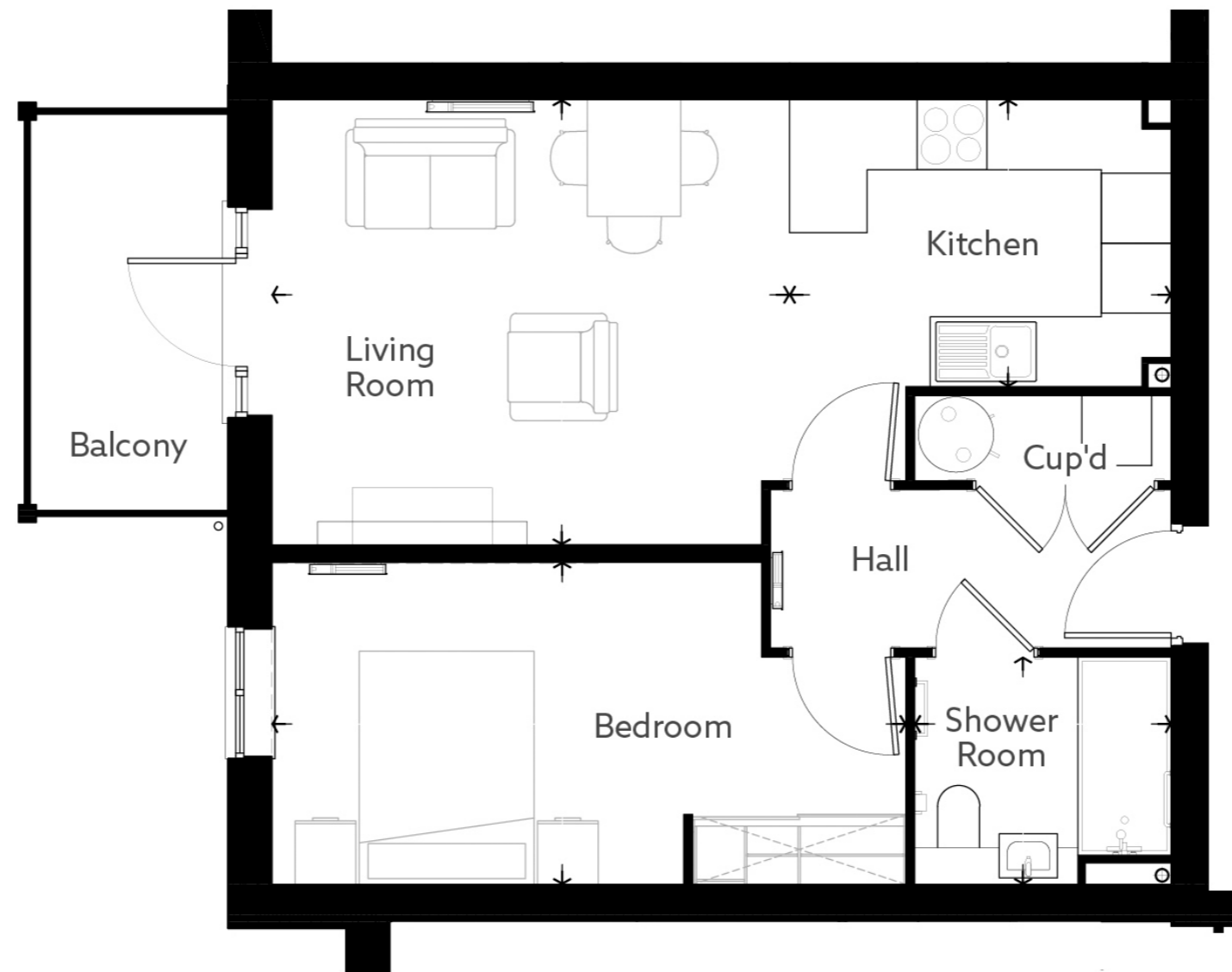
Living (Max)	14' 7" x 12' 6"	4443mm x 3816mm
Kitchen (Max)	10' 9" x 8' 1"	3275mm x 2460mm
Shower Room (Max)	7' 3" x 6' 5"	2200mm x 1950mm
Bedroom (Max)	17' 10" x 9' 1"	5441mm x 2764mm

Beesons House

Apartment 42

51.9 SQM

599.1 SQFT



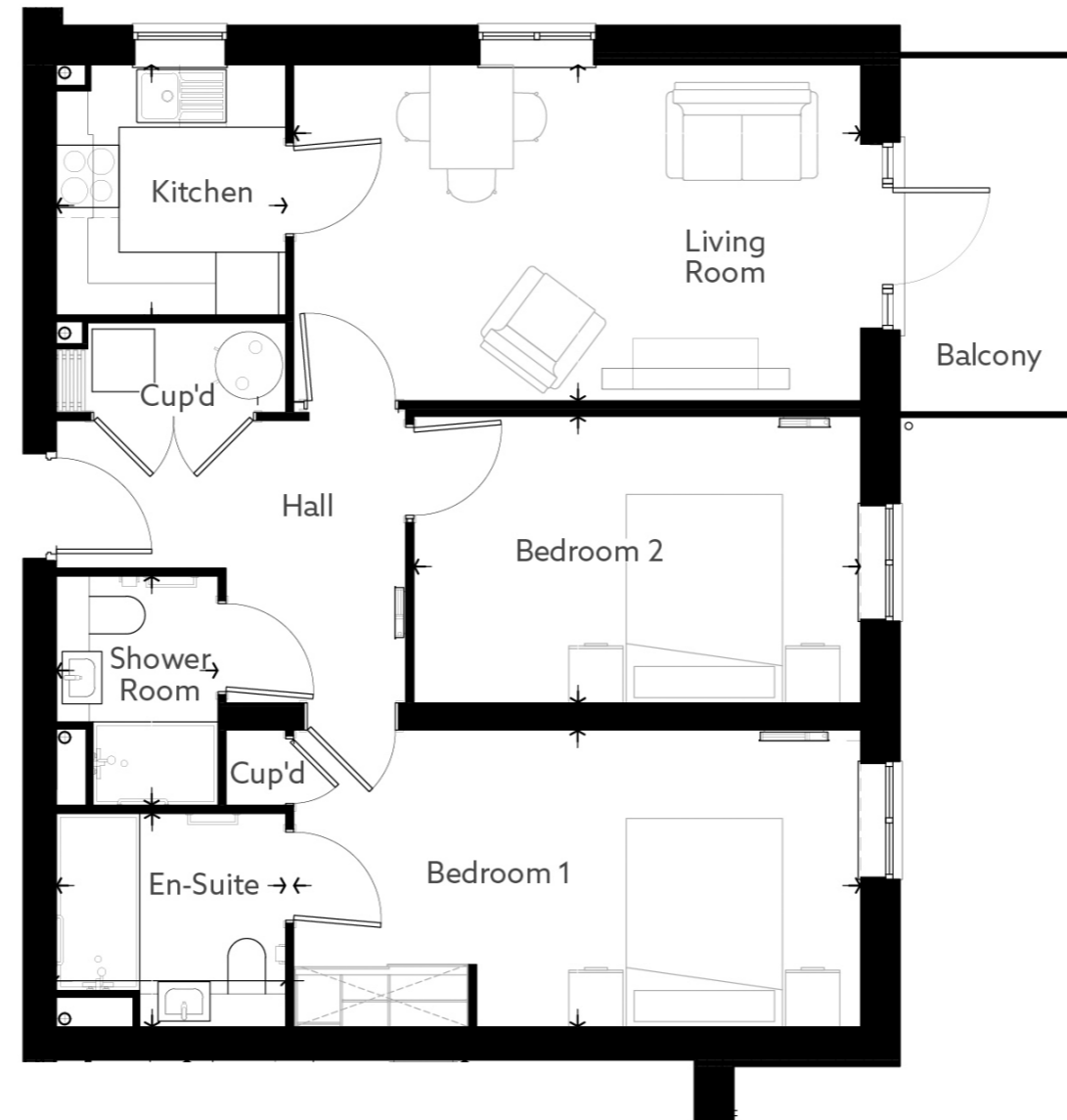
Living (Max)	14' 7" x 12' 6"	4443mm x 3816mm
Kitchen (Max)	10' 9" x 8' 1"	3275mm x 2460mm
Shower Room (Max)	7' 3" x 6' 5"	2200mm x 1950mm
Bedroom (Max)	17' 10" x 9' 1"	5441mm x 2764mm

Beesons House

Apartment 43

71.4 SQM

768 SQFT



Living (Max)	10' 7" x 17' 10"	3225mm x 5441mm
Kitchen (Max)	8' 0" x 7' 3"	2451mm x 2212mm
Shower Room (Max)	7' 3" x 5' 1"	2200mm x 1550mm
Bedroom 1 (Max)	9' 4" x 17' 10"	2850mm x 5441mm
En-Suite (Max)	6' 9" x 7' 3"	2050mm x 2200mm
Bedroom 2 (Max)	9' 0" x 14' 1"	2750mm x 4288mm