

Alternative Available



Wards

## Price

£1,300 PCM

Fees Apply

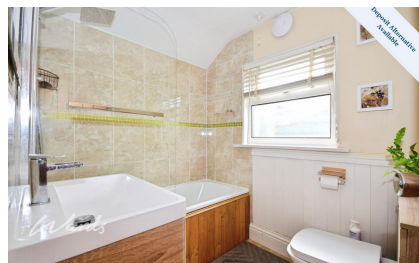


Available 30/04/26

Whitfeld Road Ashford  
TN23

Wards

Helping you move forwards



## Main Features

Mid Terrace House

Ideally located for International Railway Station

Private Rear Garden

Seperate Dining Room

Downstairs Bathroom

Entrance Porch to the Front



Deposit required is £1,500.00

Ashford District - Council Tax Band Tax Band B

Renting a property is a big commitment and we recommend that you visit the local authority website and these websites which offer helpful information and advice about letting

[www.gov.uk/government/publications/how-to-rent](http://www.gov.uk/government/publications/how-to-rent)

[www.gov.uk/private-renting](http://www.gov.uk/private-renting)

[www.wardsofkent.co.uk/renting/tenancy-fees-individuals/](http://www.wardsofkent.co.uk/renting/tenancy-fees-individuals/)

[www.gov.uk/green-deal-energy-saving-measures](http://www.gov.uk/green-deal-energy-saving-measures)

Call Ashford 01233 639654 ■ [wardsofkent.co.uk](http://wardsofkent.co.uk)

IMPORTANT INFORMATION: Please contact our Lettings Team who will confirm the total costs involved in renting this property. For clarification, we wish to inform the prospective tenant that we have prepared these details as a general guide. The agent has not carried out a detailed survey nor tested the services, appliances, or specific fittings (unless otherwise stated), and no warranty can be given as to their condition. All room measurements are taken at floor level. We strongly recommend that all the information which we provide about the property is verified by yourself and your advisers. The contents of this publication are © Wards, 2015. Wards is a trading name of Arun Estates Limited Registered in England No. 2597969

## Accommodation

Porch

Lounge 4.14 x 3.17

Dining Room 4.14 x 3.02

Kitchen

Bathroom

Utility Area

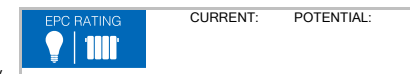
Lean To

Bedroom 1 4.22 x 3.15

Bedroom 2 3.25 x 3.23

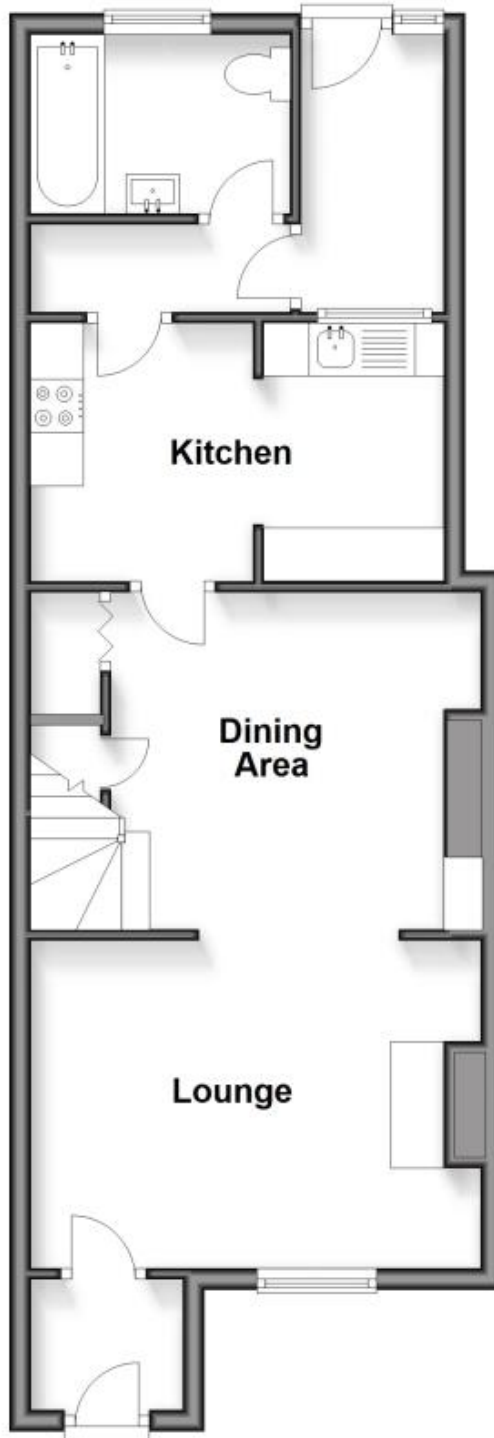
Bedroom 3 2.34 x 2.21

Garden



## Ground Floor

Approx. 49.5 sq. metres (533.1 sq. feet)



## First Floor

Approx. 36.8 sq. metres (396.3 sq. feet)

