



Chambers Road, N7 0LZ
£2,500 pcm

**DAVID
ANDREW** | your
most
valuable
asset

A bright and spacious two-bedroom maisonette set within a charming period conversion in the heart of Tufnell Park. *Please note: current photographs are slightly outdated; updated images will be available soon.*

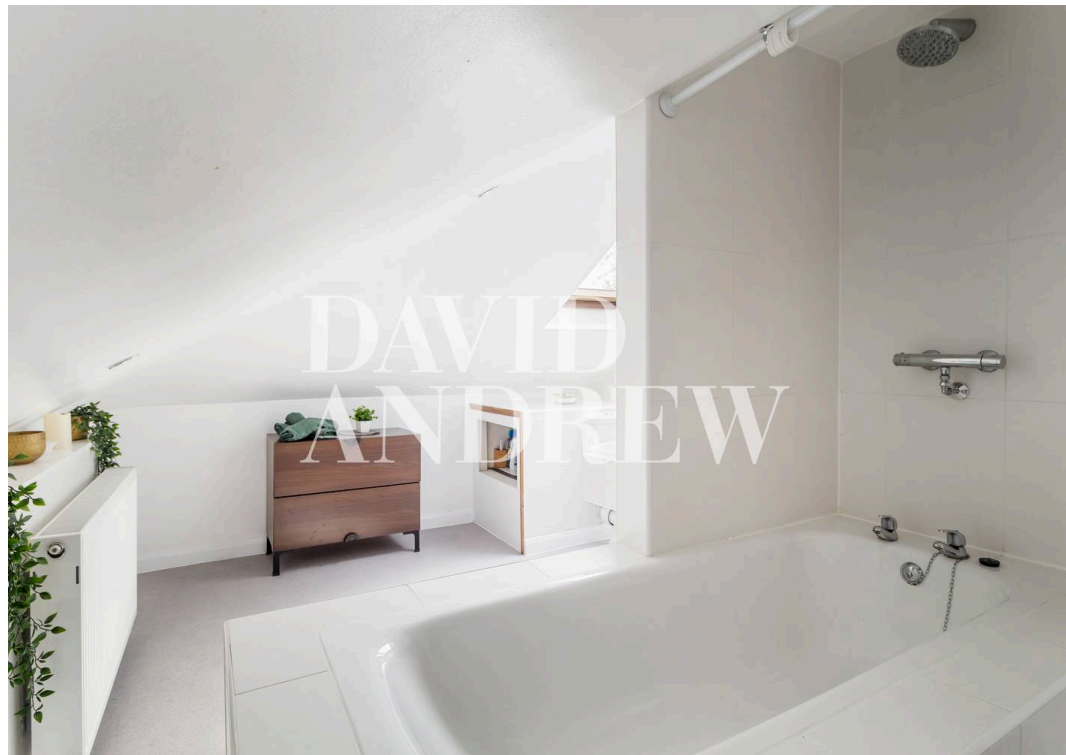
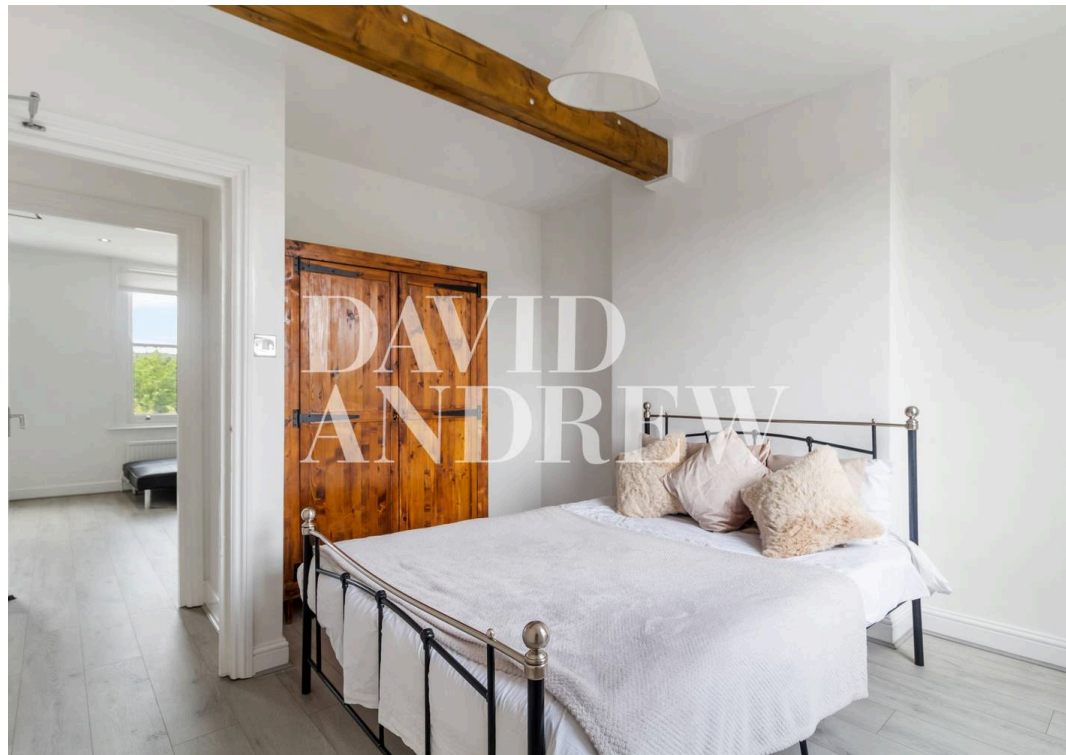
Arranged over the top two floors of a quiet residential street, this characterful property benefits from excellent natural light and attractive exposed timber beams. The accommodation comprises a generous open-plan kitchen/reception room with a fully fitted kitchen (including dishwasher), two double bedrooms, and a stylish, contemporary bathroom. Additional features include double-glazed windows, wood flooring, ample storage throughout, and gas central heating.

Ideally located within easy reach of Tufnell Park (Northern Line), Caledonian Road (Piccadilly Line) & Holloway Road (Piccadilly Line) stations, as well as a wide range of local amenities. Available from the 20th of November. Offered Part Furnished. Viewings highly recommended.

Council Tax band: C / EPC Energy Efficiency Rating: C / EPC Environmental Impact Rating: C

- Two Double Bedrooms
- Upper Maisonette
- Open Plan
- Comprising 931SQFT/86.5SQM
- Recently refurbished to a high standard
- Split over Three Levels
- Close to Transport & Amenities
- Moments from Tufnell Park, Caledonian Road & Holloway Rd Stations
- Offered Part Furnished
- Available 20th of November






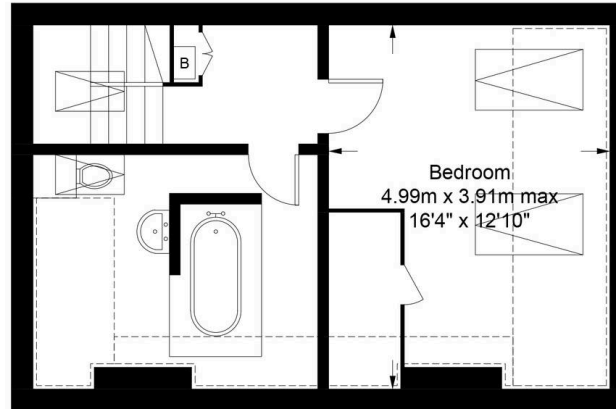


Chambers Road, N7

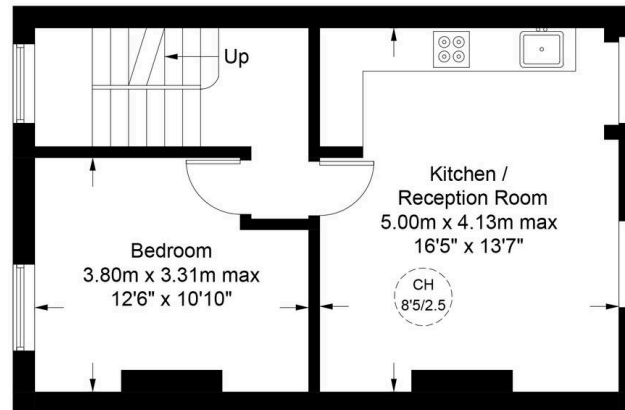
Approximate Gross Internal Area = 791 sq ft / 73.5 sq m
Reduced Headroom = 140 sq ft / 13.0 sq m
Total = 931 sq ft / 86.5 sq m

DAVID ANDREW | your most valuable asset

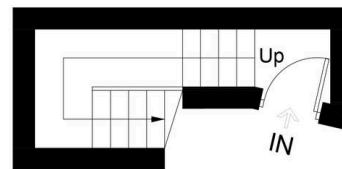
 = Reduced headroom below 1.5m / 5'0



Third Floor



Second Floor



First Floor

This plan is for layout guidance only. Not drawn to scale unless stated. Windows and door openings are approximate. Whilst every care is taken in the preparation of this plan, please check all dimensions, shapes and compass bearings before making any decisions reliant upon them. (ID967132)

scan to book a viewing



has been exercised in the of these particulars, out the property must not be as representations of fact. Prospective applicants and rely upon their own id those of professional es. David Andrew Estates ibility for any error contained in these particulars.

Archway Office

671 Holloway Road
London, N19 5SE

T (0)20 7619 3750

Highbury Office

90 Highbury Park
London, N5 2XE

T (0)20 7354 9111

Finsbury Park Office

167 Stroud Green Road
London, N4 3PZ

T (0)20 7281 2000

Property Management Office

235 Blackstock Road
London, N5 2LL

T (0)20 7354 9222

