



HYDETHORPE ROAD, SW12

£1,500,000

- Five bedrooms
- Hyde farm estate
- Victorian terraced house
- Private garden
- Garden room
- Energy rating: D

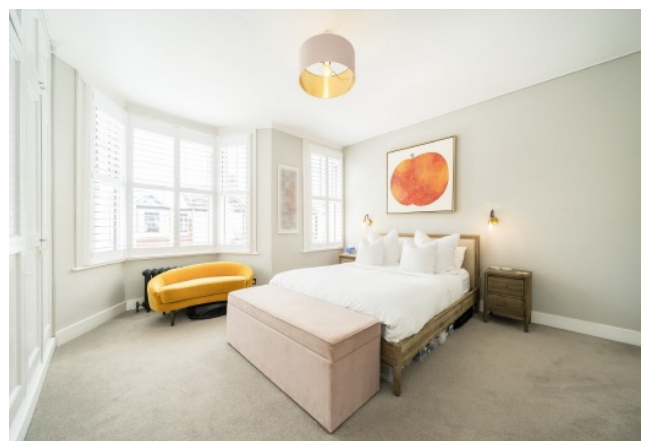




ABOUT THE HOME

An immaculate five bedroom Victorian terraced home located on the highly sought after Hydethorpe Road in the Hyde Farm Estate. The property comprises of a double reception room, W/C and open plan kitchen diner leading onto a private garden with a garden room. Upstairs there are five bedrooms and two bathrooms (including an en-suite and large bedroom in the loft).

Hydethorpe Road is a pretty Victorian Road running across the north of the popular Hyde Farm area. It is well located for two highly regarded primary schools (Henry Cavendish and Telferscot) and is also just moments from Tooting Bec Common. Balham is just a short distance away, offering a host of amenities including many shops, bars and restaurants as well as access to Balham mainline and underground stations.






Ground Floor
First Floor
Second Floor

Total area (approx.): 157.1 sq. m (1,690.9 sq. ft)

Outbuilding: 8.1 sq. m (87.2 sq. ft)

(Excluding Eaves)

JACKSONS BALHAM

8-11 Balham Station Road,
 London, SW12 9SG
 Sales: 020 8675 6555
 Lettings: 020 8675 6565

Energy Rating: We aim to make our particulars both accurate and reliable. However they are not guaranteed; nor do they form part of an offer or contract. If you require clarification on any points then please contact us, especially if you're traveling some distance to view. Please note that appliances and heating systems have not been tested and therefore no warranties can be given as to their good working order.