



CRESCENT LANE, SW4

£600,000

- Two bedrooms
- Open plan living
- Split level
- Terrace
- Popular location
- Energy rating: C





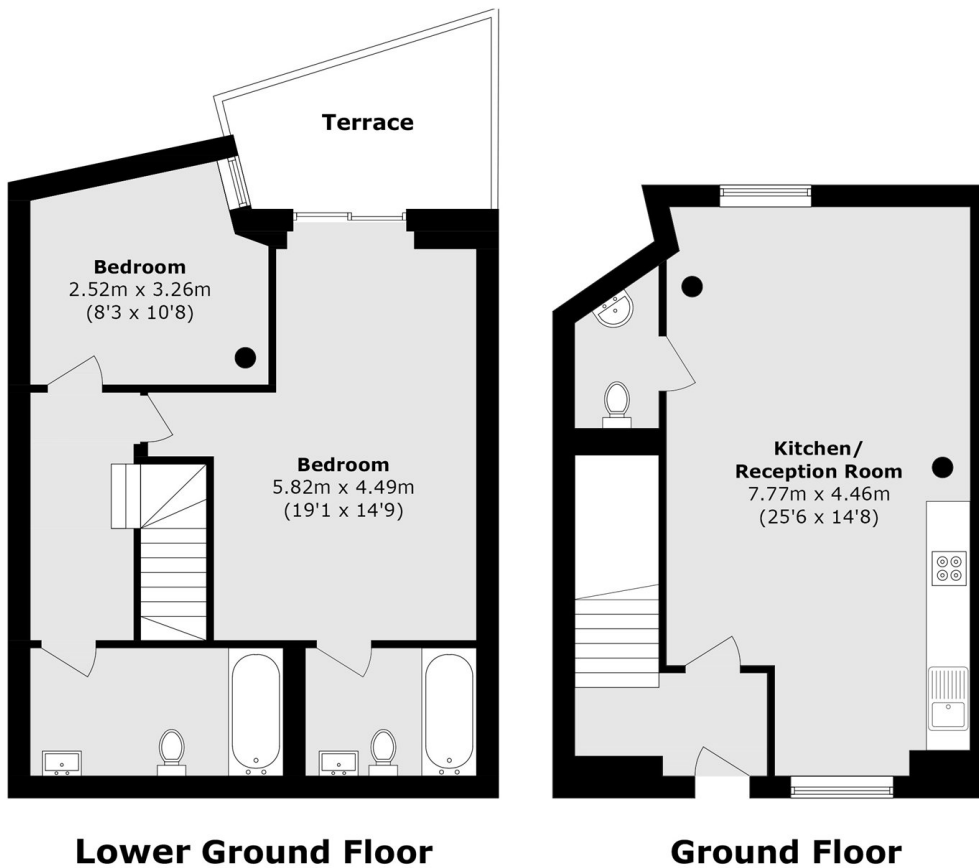
## ABOUT THE HOME

Situated in one of Abbeville Village's most popular roads, this well-presented two bedroom flat is arranged over two floors and comprises a spacious open-plan kitchen/living space, guest cloakroom/WC, two bathrooms and a private terrace.

Crescent Lane is a much sought after residential road within easy reach of Clapham Common and its many amenities, including the independent shops, cafés and bars of Abbeville Village, Clapham Old Town and Clapham High Street. Clapham Common (Northern line) Underground (0.7 mile) offers direct commuting to the City and West End, along with numerous frequent bus services running close by.







Total Area (approx.): 87.7 sq. m (944.0 sq. ft)

Terrace Area (approx.): 7.2 sq. m (77.5 sq. ft)

#### JACKSONS CLAPHAM

73 Abbeville Road, London,  
SW4 9JN

Sales: 020 8487 3177

Lettings: 020 8487 3178

Energy Rating: C We aim to make our particulars both accurate and reliable. However they are not guaranteed; nor do they form part of an offer or contract. If you require clarification on any points then please contact us, especially if you're traveling some distance to view. Please note that appliances and heating systems have not been tested and therefore no warranties can be given as to their good working order.