



Upper Richmond Road, SW15

£600,000

 2  2  1  TBC

- Two Bedrooms
- Edwardian Conversion

- Private Garden
- Share of Freehold

- Ground Floor
- Ample Storage



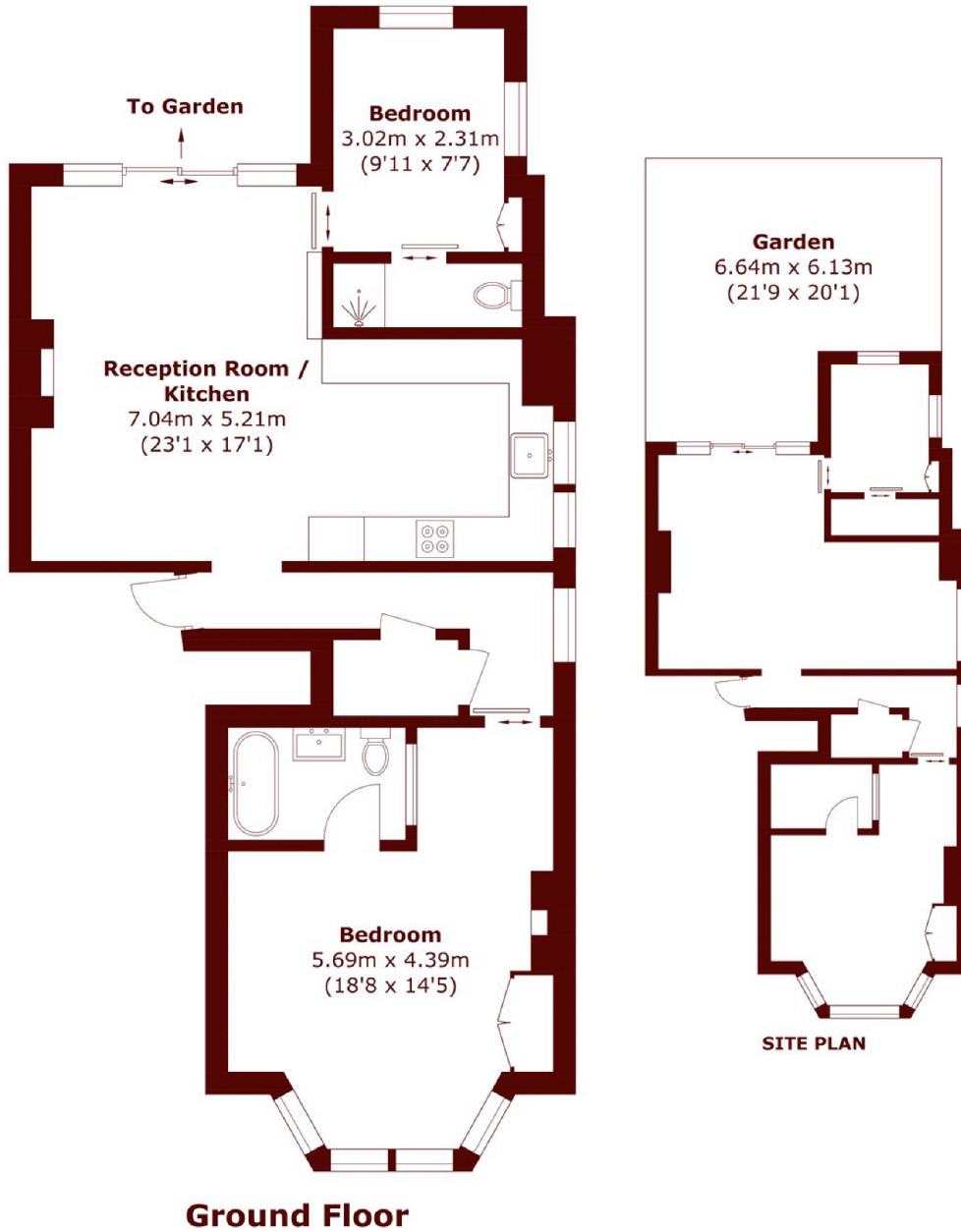


ABOUT THE PROPERTY

A beautifully presented two-bedroom Edwardian ground-floor flat, full of period charm and high ceilings, with a private south-facing garden and direct access. Just moments from Barnes Station and Barnes Common, it offers a share of freehold, spacious open-plan living, two en-suite double bedrooms, and ample built-in storage.

The property offers excellent transport links via Barnes Station and local buses to Hammersmith, Putney, and Richmond. Top schools like Barnes and East Sheen Primary are within 0.7 miles, and nearby parklands include Barnes Common, Palewell Common, and Richmond Park.





Total area (approx.): 71.1 sq. m (765.3 sq. ft)

Marsh & Parsons Barnes
73-75 Church Road, London,
SW13 9HH
020 8563 8333

We aim to make our particulars both accurate and reliable. However, they are not guaranteed; nor do they form part of an offer or contract. If you require clarification on any points then please contact us, especially if you're traveling some distance to view. Please note that appliances and heating systems have not been tested and therefore no warranties can be given as to their good working order.